

OWNER'S MANUAL



**ZIP DEE, Inc.
96 Crossen Avenue
Elk Grove Village, Illinois
60007**

(312) 437-0980

MESSAGE FROM THE PRESIDENT

15,000 Zip Dees ago

The very first Zip Dee retractable awning was designed for our personal use. We wanted something better. It took time and patience, but we got it. And when others saw Zip-Dee, they wanted one, too. Today, 15,000 Zip Dees later, we still make every Zip-Dee as though it were for our own use. There are no compromises in quality or price. Today, more people than ever are choosing Zip-Dee quality and performance. Zip-Dee awnings aren't for everyone. But those who want the finest want Zip-Dee, every time.

To get the fullest enjoyment from your Zip Dee, please read these few pages carefully. What you learn will not only help you operate your awning easier, but may add years of life to it as well.

Happy Trailering Now that you've put a Zip Dee in your life.

Henry J. Duda, President

FABRIC CARE . . .

Your Zip-Dee fabric is made of Acrilan, which cannot rot or mildew. Since it is woven, you will be cooler in its shade because of the air circulation through the weave. A regular cleaning with dry, medium bristle brush or a hose rinse is usually enough to remove most dust and dirt. For more stubborn stains, use a mild solution of pure soap (Ivory or Lux) and Borateem applied with a sponge or soft brush. Rinse well after and repeat if necessary. NEVER use a strong detergent such as 409 or Fantastic as these can remove the chemical impregnation that keeps the fabric water resistant.

Acrilan can be rolled up wet if necessary, but roll it out to dry as soon as possible afterwards. Although the fabric itself cannot be harmed, mildew can form on surface dirt, even small amounts you cannot see, which might stain (not rot) the Acrilan.

WATER LEAKS . . .

The seams in your awning are stitched and the Acrilan weave will normally reform around the needle holes to seal them off. Depending on how much you use your awning, this process may take a little longer in some cases. If so, apply a commercial seam sealer (available in canvas and some trailer supply houses) or plain paraffin wax to the top of the seams.

If the body of the fabric seems to lose its water repellancy after a time (this can be caused by a harsh industrial atmosphere or strong cleaning chemicals) you can restore it with a commercial water repelling spray such as Gard, Scotch Guard or Rain Check which are available locally. However, soap or chemical residue can "wet" the fabric so that it only appears unable to repel water in spots. So, before you do anything, rinse the fabric thoroughly and test the water repellancy again after it dries.

All fabrics can be punctured or torn by sharp door edges if they scrape or rub the underside of the fabric. This cannot be avoided on some installations. If so, you can install a small roller wheel at the top or outer edge of the door so that the fabric will be rolled out of the way as the door opens. These rollers are inexpensive, inconspicuous on the door and available at most trailer supply stores.

HARDWARE AND MECHANISM MAINTENANCE . . .

The spring arm assembly, main arm tube and the case are brite anodized aluminum. All castings are chromed aluminum alloys. The main arm bar, snap studs and all nuts, bolts and stress bearing shafts are stainless steel.

Although your Zip-Dee requires less maintenance than an ordinary awning, a little care (about the same amount you give your coach) will keep it in top shape. At the end of each season, check and tighten any loose bolts or screws. If any are missing, use factory replacements only.

To insure easy operation and to prevent corrosion where it may be a problem (Florida coast area especially) clean all accessible hardware with alcohol and protect them with a coating of good auto wax. Use a spray silicone lubricant for inaccessible spots. Extend the main and spring arms as far as possible to wipe off sand and dirt that can clog and score the aluminum.

STORM PRECAUTIONS . . .

No awning should be subjected to sudden gusts of wind or heavy rains. Your Zip-Dee is made of tough stuff, but there are limits. It can take as much wind and rain as you can sitting comfortably under it. But some steps should be taken for your own security since there is no guarantee against damage caused by wind, rain or storm.

If you are going away for even a short time or just retiring for the night, close the awning. It only takes a few seconds (faster than you can close the windows) and affords positive protection.

If for some reason you can't close the awning, lower both ends of the awning as far as you can without removing the spring arms. At the very minimum (and only if you are remaining with the awning) lower one end only as far as you can.

Since water weighs 9 pounds per gallon, don't subject your awning and trailer or motor home unnecessary strain. It only takes a little time to be completely safe.

REPLACEMENT PARTS . . .

If something goes wrong, we are as close as your telephone or post office. When ordering parts, please use the number and descriptions shown on the parts list page 8. Be sure to give make, model and year of your vehicle. Damaged parts must accompany any warranty claim. If you are unable to remove the damaged part until you receive a replacement, the replacement must be purchased as a new part. You will receive a refund after we receive the damaged part, subject to the condition stated in our warranty.

All parts are sent C.O.D. unless your check accompanies your order.

Since the warranty covers the original owner only, be sure to mail your warranty card immediately. A warranty claim will be honored only if your card is in our file.

. . . **ENJOY YOUR ZIP-DEE**

TO OPEN THE AWNING

- Figure 1. Loosen clamp wheels and tilt inward as shown.
- Figure 2. Completely unroll the awning by pulling the tab toward you with the hook. Fold and tuck the tab into the loop nearest the roller on the underside of the awning. Now move under the awning and proceed with steps 3-5 as applicable.
- Figure 3. *Straight-side coaches only (curved-side coaches go to Step 4). Release snap stud on main arm and extend the awning until the second hole is engaged.
- Figure 4. Extend spring arm by releasing snap stud and placing claw on shaft of roller, set spring arm tension by pushing briskly in direction of arrow.
- Figure 5. Raise awning to desired height by extending main arm; release snap stud and push outward on underside of roller— release snap stud so it will engage at desired height. Lean, so that body weight rather than arm strength carries out this step. Repeat steps 3-5 for the other side.

SHORT AWNING

Unroll awning two-thirds of its length and place spring arm claw on roller shaft— do not release snap stud. Do not release the tab until spring arm is secured. Fold tab and tuck into middle loop.

*Avion and GMC coaches follow straight-side procedure unless otherwise instructed.



FIGURE 1.

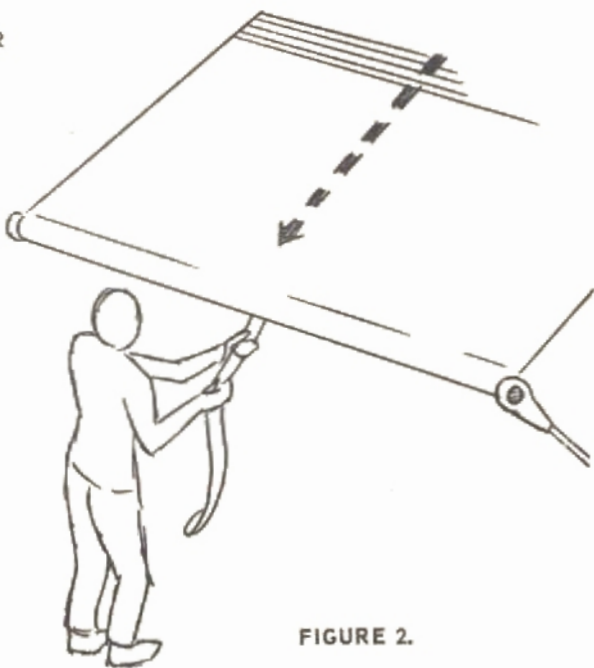


FIGURE 2.

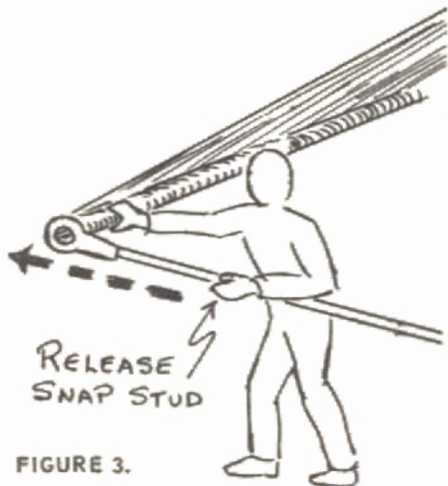


FIGURE 3.

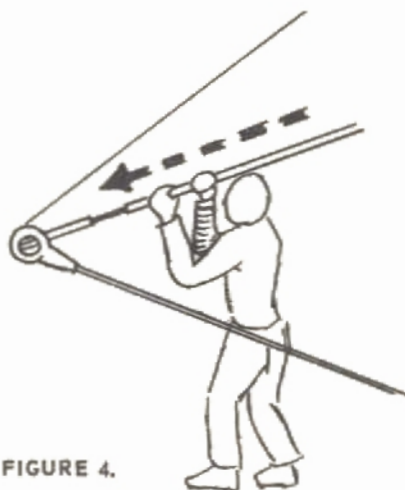


FIGURE 4.

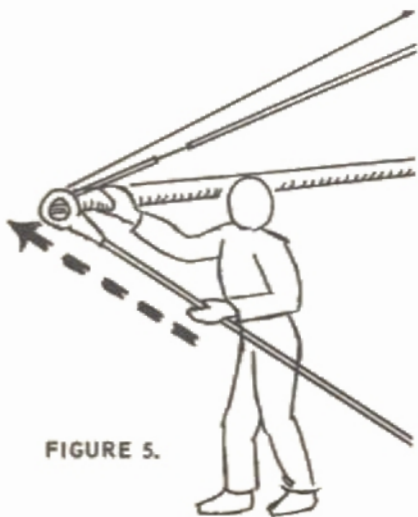


FIGURE 5.

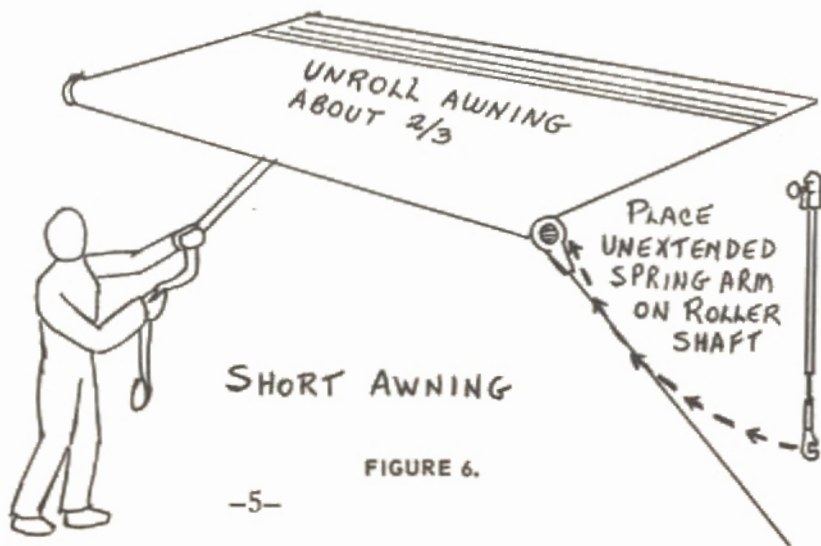


FIGURE 6.

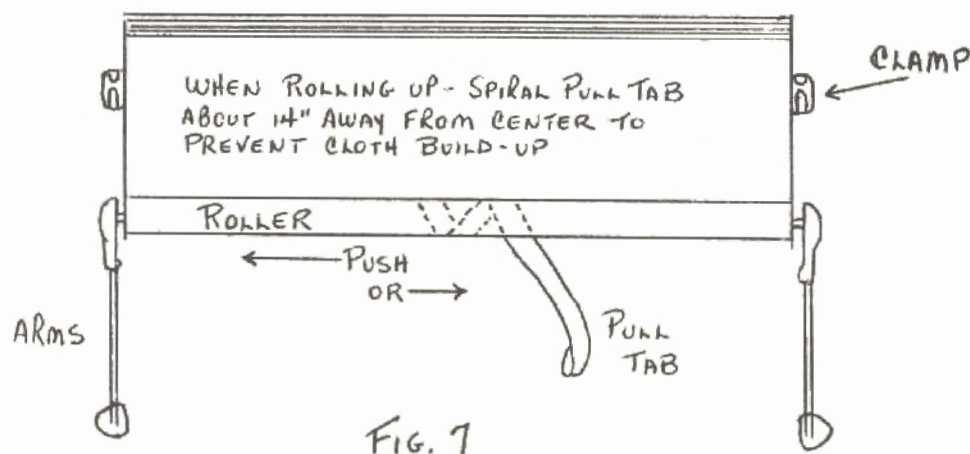
TO CLOSE AWNING

1. Release snap studs on main arms and lower awning.
2. Release snap studs on spring arms, remove claws from roller shaft and place them on claw pins (on inside of main arms), as shown in Figure 8. This "scissor-action" guides the main arms evenly and upward.
3. While facing the awning and holding the tab loosely in one hand, give the roller an upward push until the spring takes over. Control the roll-up speed by holding the tab until all but 6" of fabric has rolled up. Release tab and allow awning to roll free for these last few inches and snap closed.

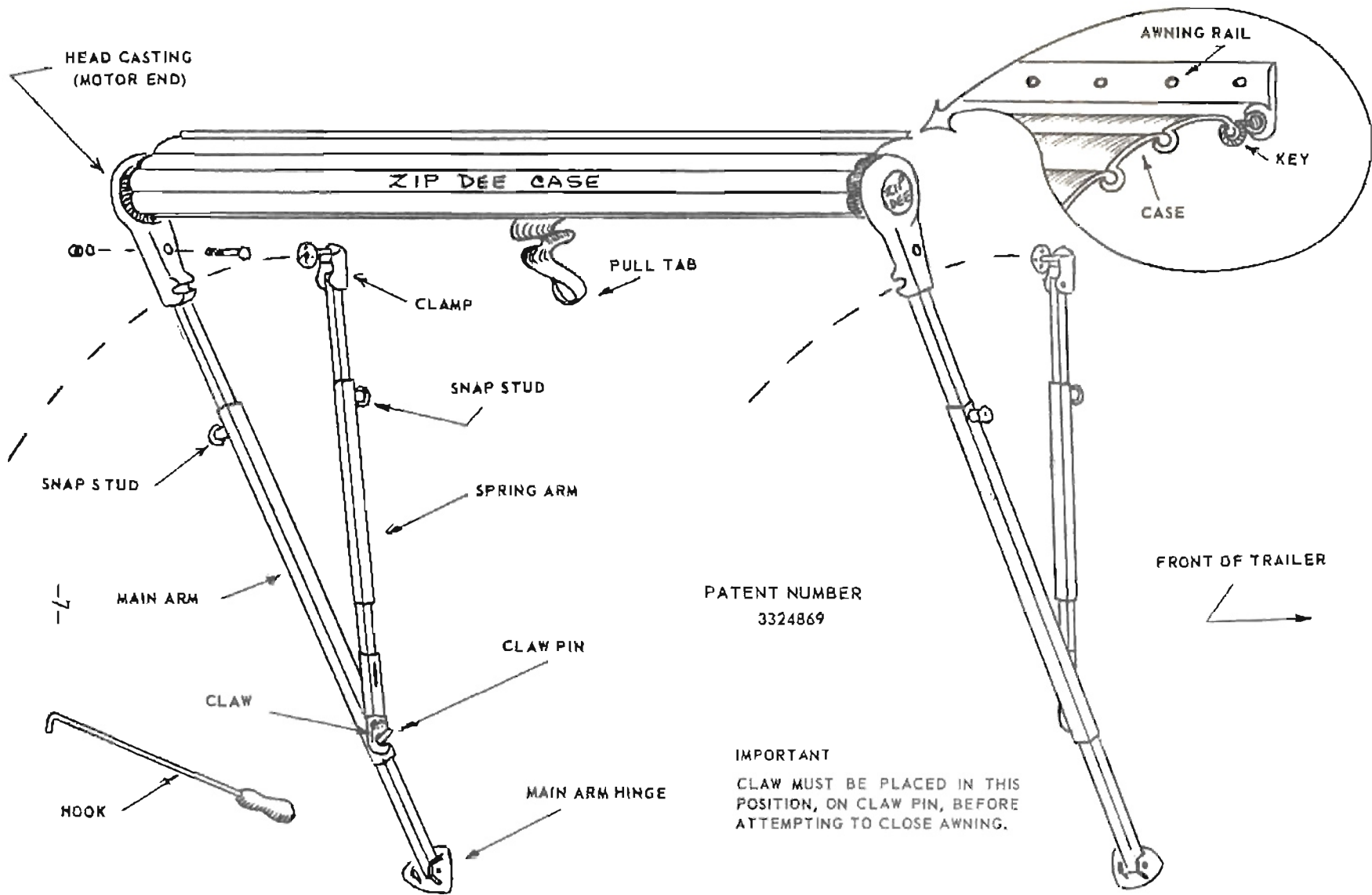
NOTE: The tab must be spiraled around the roller as shown in Figure 7. This prevents a loose roll and bunching up of fabric.

4. Tighten clamp wheels before moving trailer.

IF AWNING ROLLS UP UNEVEN



Observe if the roll-up is even and in line with clamps. If not, then unroll and give roller a slight push toward the direction it should go. If you wish to have the awning roll up more in either direction, then spiral the pull tab in that direction.



HEAD CASTING
(MOTOR END)

ZIP DEE CASE

AWNING RAIL

KEY

CASE

PULL TAB

CLAMP

SNAP STUD

SNAP STUD

SPRING ARM

MAIN ARM

CLAW PIN

CLAW

MAIN ARM HINGE

HOOK

PATENT NUMBER
3324869

FRONT OF TRAILER

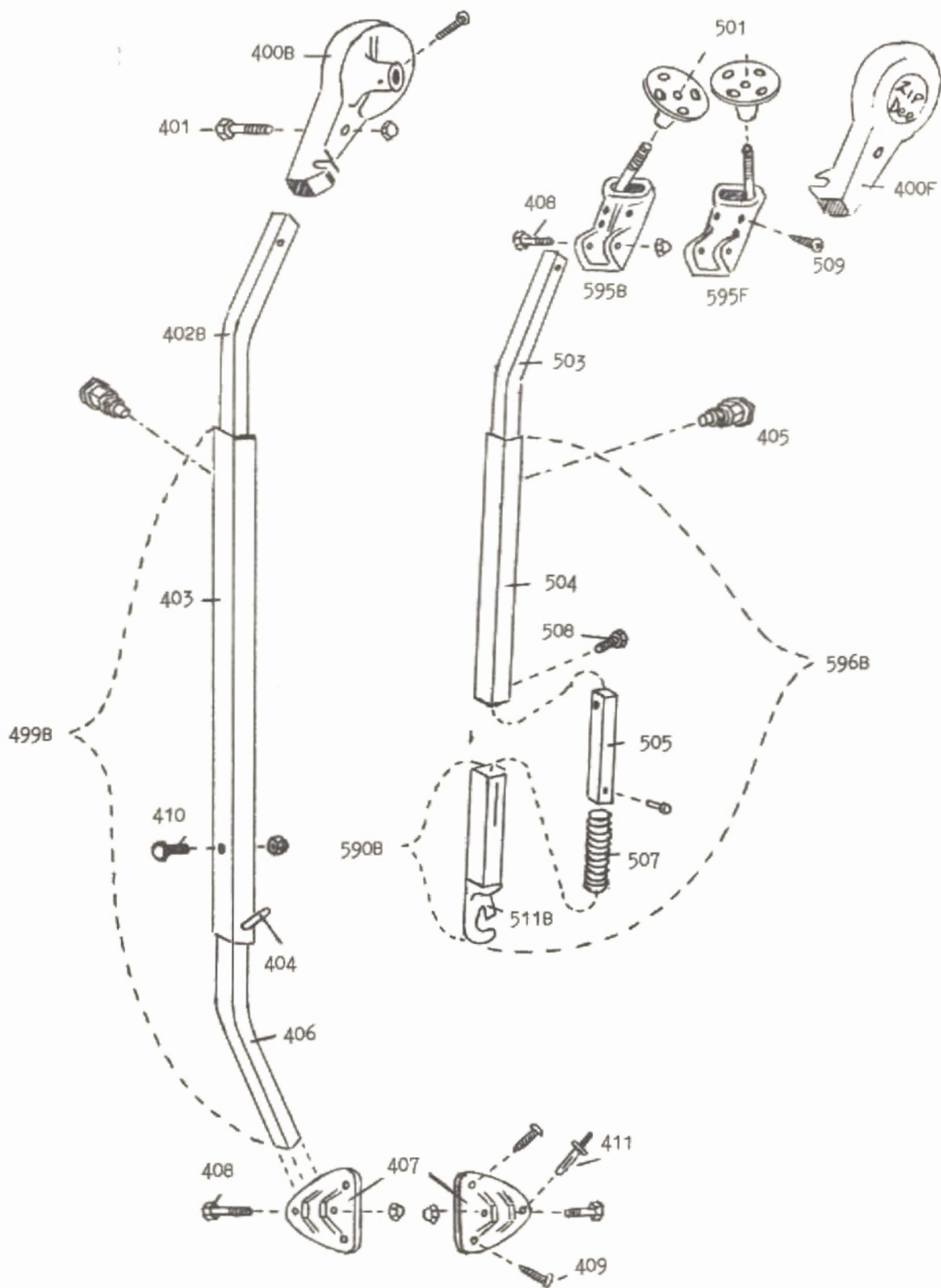
IMPORTANT
CLAW MUST BE PLACED IN THIS
POSITION, ON CLAW PIN, BEFORE
ATTEMPTING TO CLOSE AWNING.

HARDWARE PRICE LIST

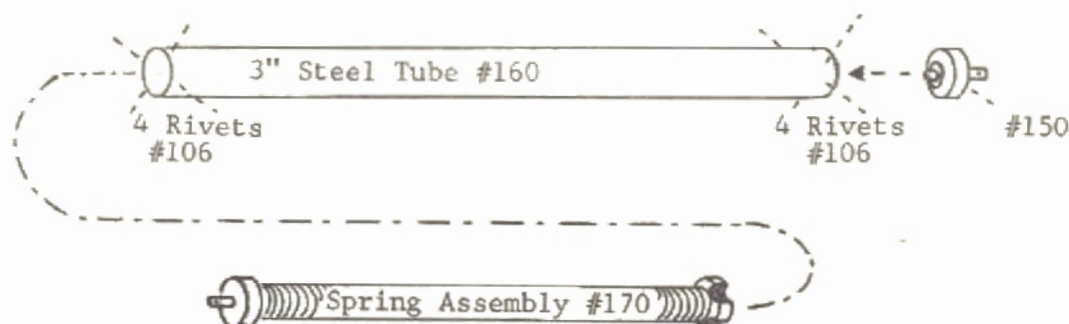
NOTE: WHEN ORDERING PARTS, SPECIFY YEAR AND MAKE OF TRAILER,
AND WHETHER PART IS FOR FRONT OR BACK ARMS.

PART #	DESCRIPTION	<u>RETAIL</u>
MAIN ARM COMPONENTS		
400 F	FRONT HEAD	13.95
400 B	BACK HEAD	"
401	$\frac{1}{2}$ -20 x $1\frac{1}{2}$ " HEAD BOLT, LOCK WASHER & CAP NUT ASSEMBLY	.70
402 F	FRONT MAIN ARM BAR	43.50
402 B	BACK MAIN ARM BAR	"
403	MAIN ARM TUBE ONLY	11.35
404	CLAW PIN - $\frac{1}{2}$ x 1"	.18
405	SNAP STUD ASSEMBLY	3.00
406	MAIN HINGE BAR	3.00
407	BASE HINGE	2.75
408	$\frac{1}{2}$ -20 x $1\frac{5}{8}$ " HINGE BOLT & CAP NUT	.63
409	#14 x 1" SELF TAPPING SCREW	.15
410	$\frac{1}{2}$ -20 x $1\frac{1}{2}$ " TUBE BOLT & CAP NUT ASSY.	.53
411	$\frac{3}{16}$ " x $\frac{1}{2}$ " "BULB-TITE" BLIND RIVET	.20
499 F	FRONT SUPPORT ARM TUBE ASSEMBLY	15.35
499 B	BACK SUPPORT ARM TUBE ASSEMBLY	"
SPRING ARM COMPONENTS		
501	CLAMP WHEEL	1.45
503	SPRING ARM BAR ONLY	8.45
504	SPRING ARM TUBE ONLY	8.90
505	SPRING ARM STUB BAR	.86
507	CLAW TUBE SPRING	.46
508	$\frac{1}{2}$ -20 x $\frac{5}{8}$ " STUB BOLT	.15
509	#10 x $\frac{3}{4}$ " SELF TAPPING SCREW	.11
511 F	FRONT CLAW ONLY	1.55
511 B	BACK CLAW ONLY	"
590 F	FRONT CLAW TUBE ASSEMBLY - LESS SPRING	3.50
590 B	BACK CLAW TUBE ASSEMBLY - LESS SPRING	"
595 F	FRONT CLAMP ASSEMBLY - LESS WHEEL	3.95
595 B	BACK CLAMP ASSEMBLY - LESS WHEEL	"
596 F	FRONT SPRING ARM ASSEMBLY - LESS BAR	12.74
596 B	BACK SPRING ARM ASSEMBLY - LESS BAR	"
599	COMPLETE SET OF HARDWARE	168.00

EFFECTIVE 1-1-75



Parts List and Price Schedule



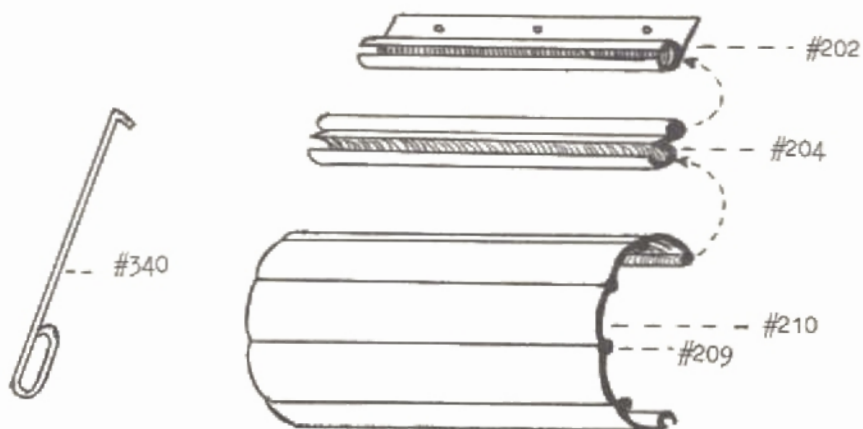
PART	DESCRIPTION	RETAIL
150	IDLE END SHAFT ASSEMBLY	4.20
160	3 INCH GALV. STEEL TUBING	2.50 FT.
170	MOTOR SPRING ASSEMBLY	42.50
106	1/8 x 3/8 BLIND RIVETS	.03 EA.

FULLY ASSEMBLED 3" AWNING ROLLERS

PART	TUBE MEASUREMENT	RETAIL
110	9' 10"	65.00
111	" "	"
112	11' 10"	73.00
113	" "	"
114	13' 10"	77.00
115	" "	"
116	15' 10"	83.00
117	" "	"
118	17' 10"	87.00
119	" "	"
120	19' 10"	92.00
121	" "	"
122	21' 10"	95.00

NOTE: IN BETWEEN SIZES PRICED AT THE NEXT HIGHER SIZE SHOWN ABOVE.

ZIP-DEE CASES, FABRICS & ASSOCIATED ITEMS #200 & #300



PART #	DESCRIPTION	RETAIL
202	AWNING RAIL	.26 FT.
204	LOCKING KEY EXTRUSIONS	.40 FT.
209	1/8 x 5/32 S.S. BLIND RIVETS	.08 EA.
210	ZIP-DEE ROLL-UP CASE (5 SLATS)	
	STATE LENGTH IN FEET AND INCHES,	
	CASE IS ASSEMBLED EXAMPLE:	
	(AIRSTREAM 21' AWNING TAKES 20'9" CASE)	4.40 FT.
310	ACRILAN FABRIC AWNING 10 FT. (9'9")	120.75
311	" " " 11 FT. (10'9")	"
312	" " " 12 FT. (11'9")	132.50
313	" " " 13 FT. (12'9")	"
314	" " " 14 FT. (13'9")	141.50
315	" " " 15 FT. (14'9")	"
316	" " " 16 FT. (15'9")	165.00
317	" " " 17 FT. (16'9")	"
318	" " " 18 FT. (17'9")	188.50
319	" " " 19 FT. (18'9")	"
320	" " " 20 FT. (19'9")	196.50
321	" " " 21 FT. (20'9")	"
322	" " " 22 FT. (21'9")	208.25

NOTE: DUE TO STYLE CHANGES — REPLACEMENT FABRICS MUST BE ORDERED DIRECTLY FROM FACTORY. SEE BROCHURE FOR COLOR IDENTIFICATION.

330	1/8" WIDE FLANGE RIVETS TO MOUNT FABRIC TO ROLLER	.04 EA.
340	ZIP-DEE HOOK	1.60

EFFECTIVE 1-1-75

ZIP-DEE LIFETIME WARRANTY PLAN

IMPORTANT!

PLEASE READ CAREFULLY

BASIC OPERATION WARRANTY

ZIP-DEE owning products are warranted to the original owner to be free from defects in workmanship or material under normal use. Any part requiring replacement will be repaired or replaced without charge if the part is returned, transportation prepaid, to the ZIP-DEE factory. Damages or wear, other than normal wear, which in our judgement resulted from misuse, negligence or accident, including rain or wind, are not covered by this warranty.

At your option, inspection, repair and/or replacement of defective parts may be done at any authorized dealer. However, any labor charges incurred as a result of such work are not included in this warranty.

Authorization to return parts and instructions on disassembly or packaging should be obtained from ZIP-DEE by mail or phone prior to returning any material.

FIVE YEAR FABRIC WARRANTY

Glen Raven Mills, Inc., guarantees this owning fabric against loss of color or strength from normal exposure conditions, including sunlight, mildew, rot and atmospheric chemicals, which may render it unservicable, for a period of five (5) years from the date of original installation, or they will supply a new fabric free of charge.

This guarantee does not cover damage from acts of God or malicious mischief

These guarantees are in lieu of all other guarantees, expressed or implied, including any implied warranty of merchantability or any other obligation or liability on the part of ZIP-DEE, Inc. No person or representative is authorized to make any other warranty or assume any liability other than what is contained in this warranty.