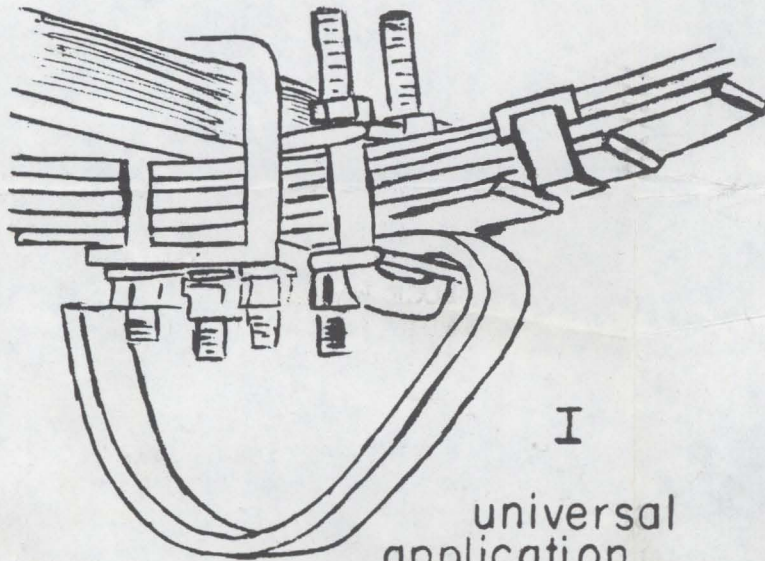


TRAV-L-GLIDE

by **assco.**



I
universal
application

9.95 list/PAIR

fits all models - springs over or
under the axle. ease of installation.
sizes 3 1/2 to 8 1/2.

EASY TO INSTALL. UNNECESSARY
TO JACK UP TRAILER. FITS ANY
TRAILER WITH LEAF SPRINGS OVER
OR UNDER THE AXLE.

PLACE ONE TRAV-L-GLIDE UNDER
EACH SPRING ON FRONT SIDE OF
AXLE OR TIE PLATE WITH TURNED
DOWN LIP TOUCHING AXLE OR TIE
PLATE. PLACE ONE OF THE TWO
HOLE PLATES ON U-BOLT AND PLACE
U-BOLT OVER SPRING AND TRAV-L-
GLIDE. ADD SECOND TWO HOLE PLATE,
LOCK WASHERS AND NUTS. TIGHTEN
NUTS SECURELY. (U-BOLTS MAY BE
INSTALLED EITHER UP OR DOWN)

WHEN INSTALLATION IS COMPLETE,
THERE WILL BE A SHOCK GAP BETWEEN
THE TAIL END OF THE TRAV-L-GLIDE
AND REAR HALF OF THE SPRING.