

AIRSTREAM

TRAVEL TRAILERS



LIGHTWEIGHT. STREAMLINED.

FUEL EFFICIENT.

Founder Wally Byam knew that a rounded low-profile shape would make towing easier and more stable. And he knew that aluminum would make his trailers as light as possible.

The resulting combination has been a Airstream travel trailers are world-renowned for their superior structural integrity. That's because Airstream employs semi-monocoque construction, consisting of an inner and outer layer of aluminum stretched and riveted to the frame, working as an integral part of the structure.

Hand-built with a craftsman's attention to detail, this aluminum skin offers unmatched durability and strength for its weight. Just ask one of the more than 100,000 Airstream owners.



FLYING CLOUD TRAILERS

When you're ready to take a break from the great outdoors, the Flying Cloud invites you inside with the flair of modern design. From fabrics to fixtures to cabinetry, the Flying Cloud line reflects your taste in clean, comfortable, contemporary styling throughout. The right sized travel trailer for any adventure, the Airstream Flying Cloud travel trailer combines light weight and ruggedness with total practicality. Innovative storage solutions and multi-function work spaces prevail throughout the living space, like underseat storage or the additional counter space available when the sink cover is in place.

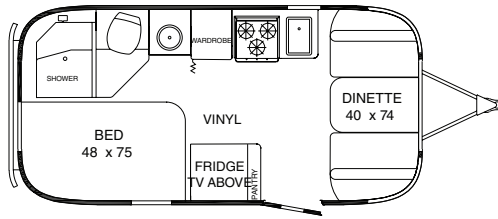
No matter if you're a first-time Airstreamer or seasoned veteran of the road, the Flying Cloud gets you on your way to your next adventure in contemporary style, luxurious comfort, and long-lasting value.



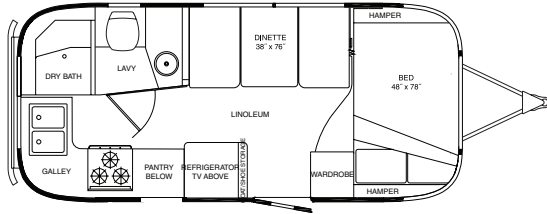
AIRSTREAM

TRAVEL TRAILERS

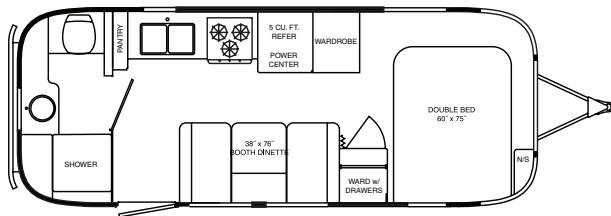
19 FLYING CLOUD



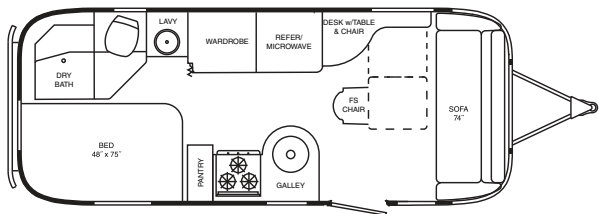
20 FLYING CLOUD



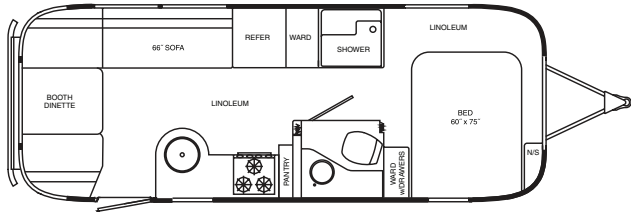
23 FB FLYING CLOUD



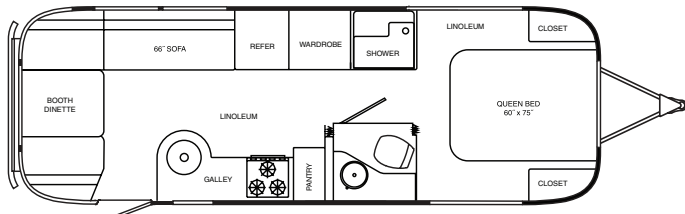
23 FLYING CLOUD



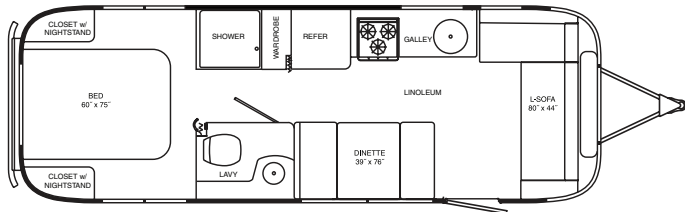
25 FB FLYING CLOUD



27 FB FLYING CLOUD



28 FLYING CLOUD



FLYING CLOUD TECHNICAL SPECIFICATIONS

	19	20	23	23FB	25FB	27FB	28
Exterior Length	19'2"	20'10"	23'	23'9"	25'11"	28'	27'11"
Width Exterior	8'	8'	8'	8'	8'-5.5"	8'5.5"	8'5.5"
Width Interior	7'7"	7'7"	7'7"	7'7"	8'1"	8'1"	8'1"
Height Exterior w/A/C	9'5"	9'5"	9'5"	9'5"	9'7"	9'7"	9'7"
Height Interior w/A/C	6'4.5"	6'4.5"	6'5"	6'5"	6'5"	6'5"	6'5"
Hitch Ball Height	17.75"	17.75"	17.75"	17.75"	17.75"	17.75"	17.75"
Hitch Weight w/o Options or Variable Weight	570	640	730	500	760	775	950
UBW (Unit Base Weight)	3,725	4,197	4,707	4,757	5,477	5,600	5,700
NCC (Net Carrying Capacity) w/o Options Fluids or Cargo	775	803	1,293	1,243	1,823	2,000	1,600
GVWR (Gross Vehicle Weight Rating)	4,500	5,000	6,000	6,000	7,300	7,600	7,300
Water Tank w/Drain Valve	23	23	30	39	39	39	39
Blackwater Tank (gal)	18	18	18	18	39	39	35
Graywater Tank (gal)	21	21	21	30	37	37	37
Water Heater (gal) w/Electronic Ignition	6	6	6	6	6	6	6
A/C w/Heat Pump & Electronic Controls	13,500	13,500	13,500	13,500	13,500	13,500	13,500
Furnace w/Electric Ignition (BTU)	16,000	18,000	18,000	18,000	25,000	25,000	30,000
LPG (lbs) (2-30# Steel Tanks)	60	60	60	60	60	60	60
Deep Cycle Group	2	2	2	2	2	2	2
Sleeping Capacity	4	4	5	4	4	4	5
DECORS							
STRATUS							
MIDNIGHT SUN							
BURNT SIENNA							
SEA GREEN							

