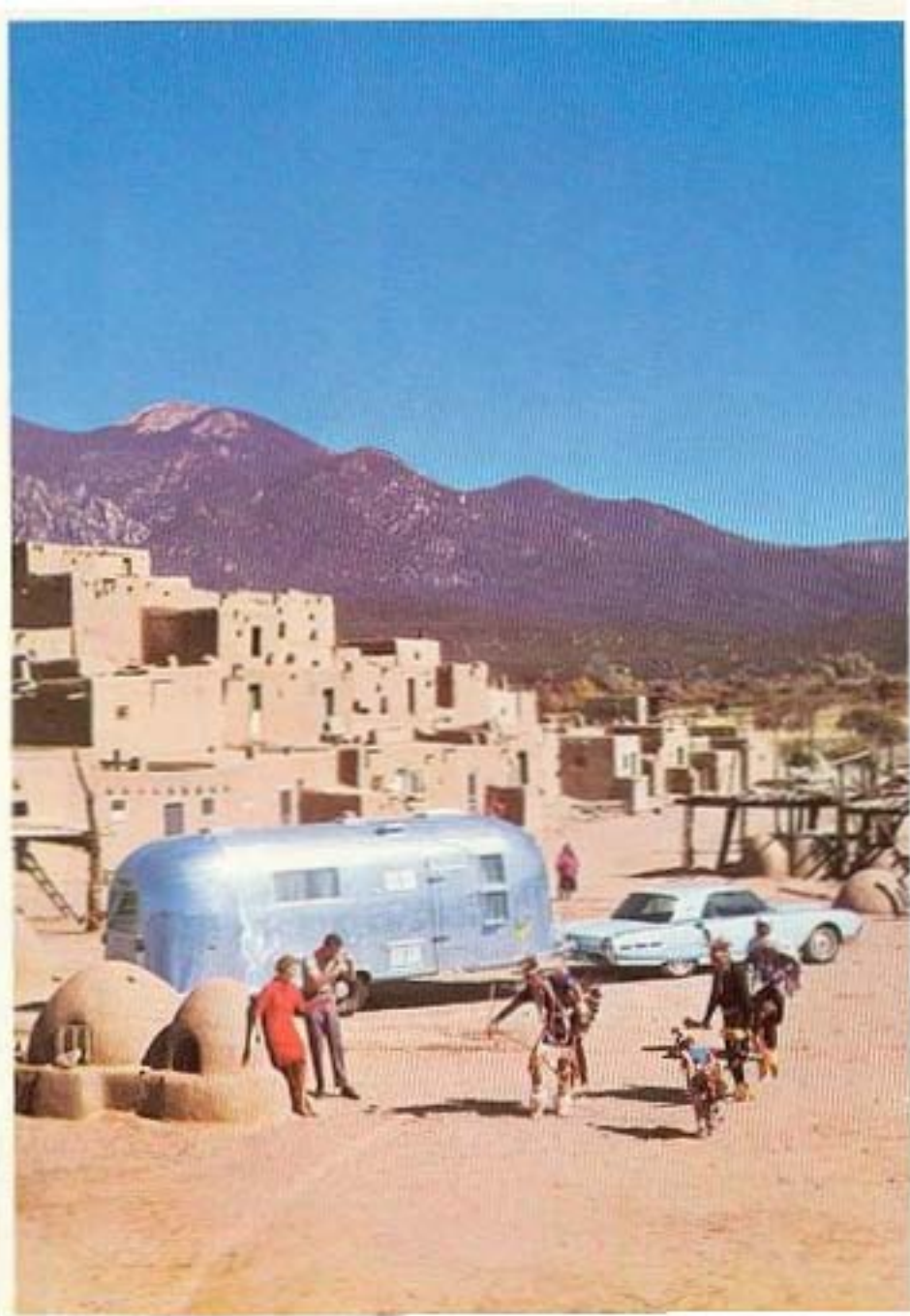
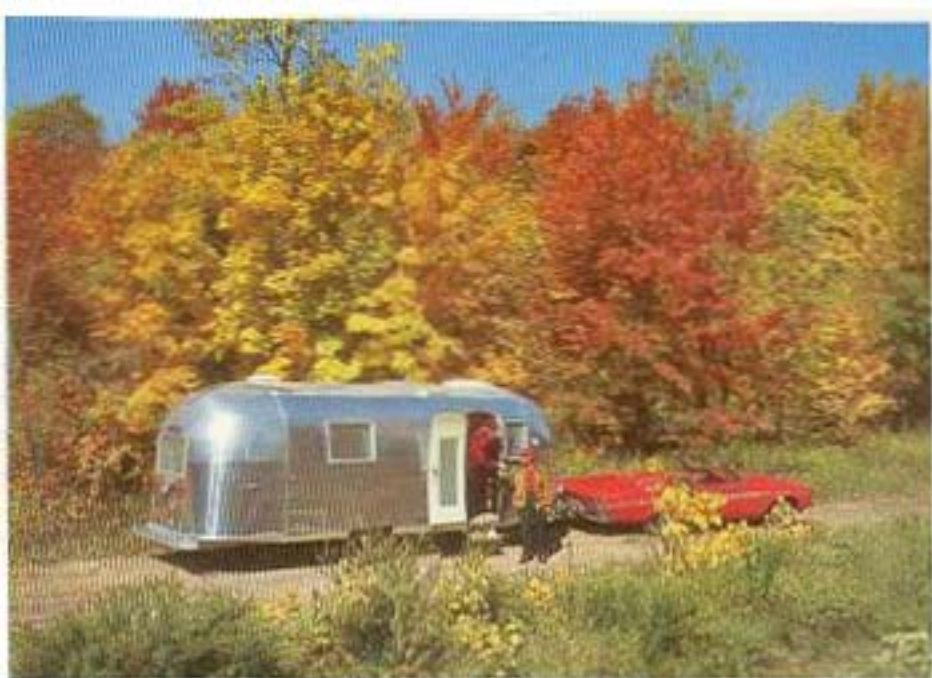


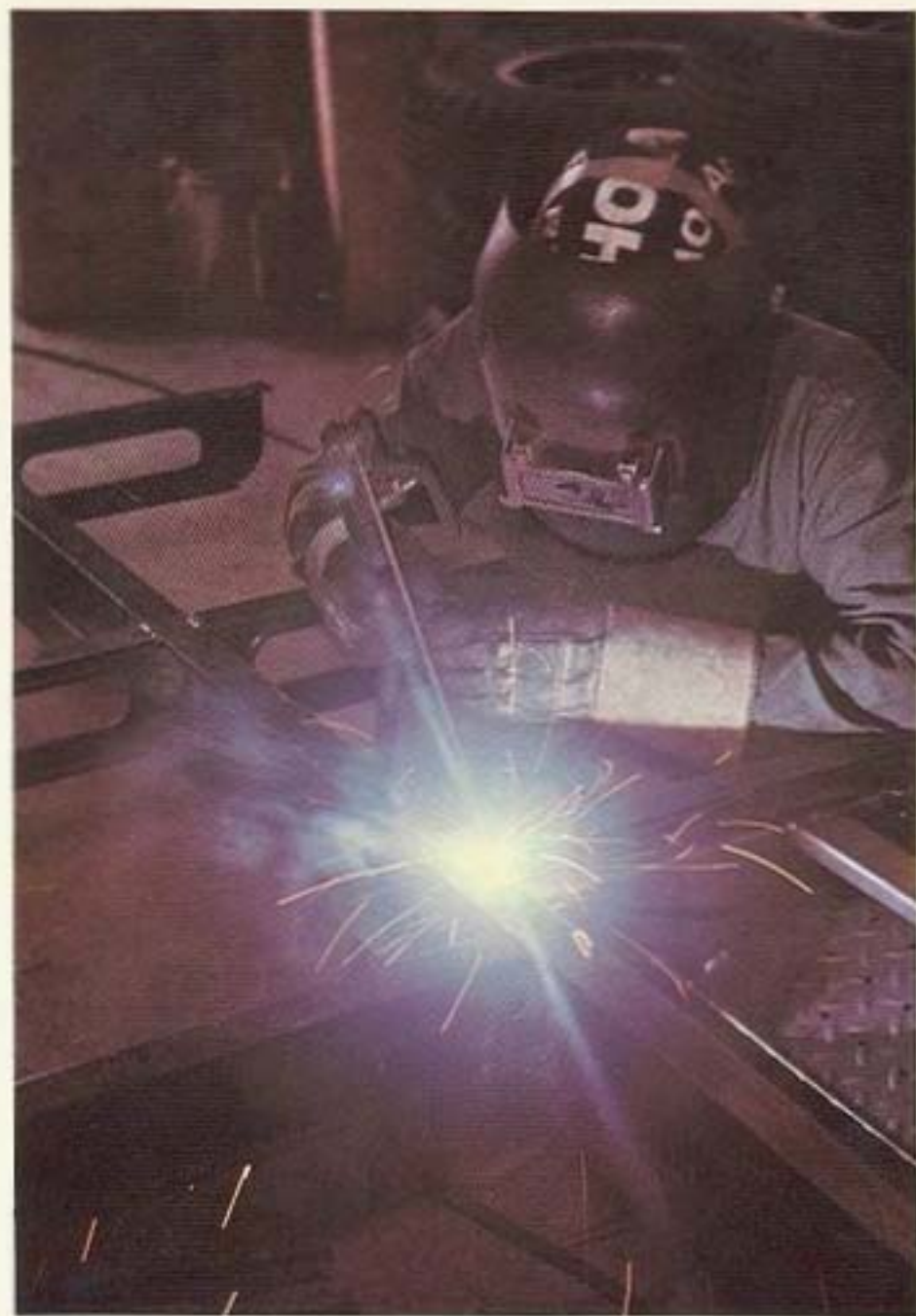


THE AIRSTREAM STORY

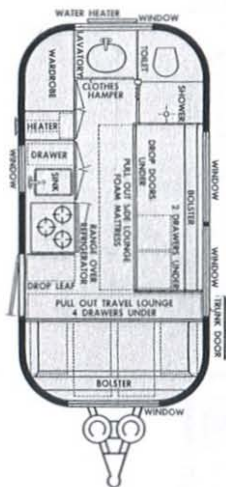
AIRSTREAM 1964





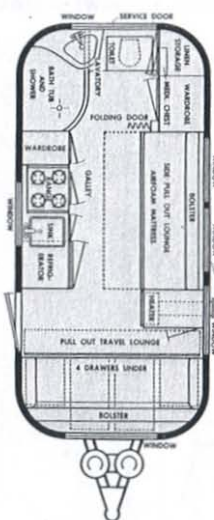


17 FOOT
BAMBI II



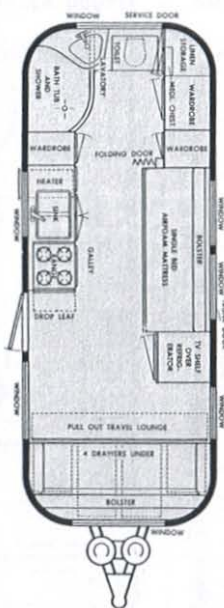
WEIGHT 1950 LBS.

19 FOOT
GLOBE TROTTER



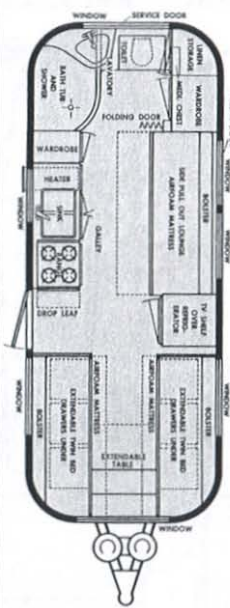
WEIGHT 2890 LBS.

22 FOOT
SAFARI SLEEP 2



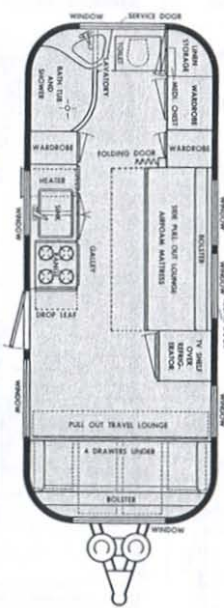
WEIGHT 3100 LBS.

22 FOOT
SAFARI TWIN



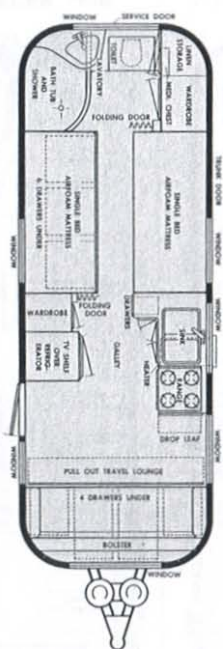
WEIGHT 3100 LBS.

22 FOOT
SAFARI DOUBLE



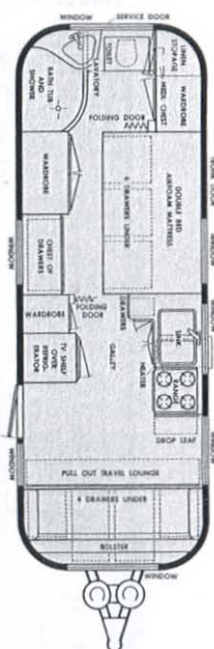
WEIGHT 3100 LBS.

24 FOOT
TRADE WIND TWIN



WEIGHT 3480 LBS.

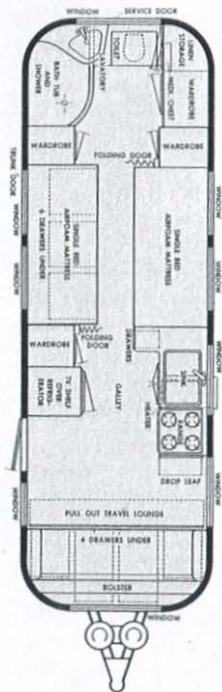
24 FOOT
TRADE WIND DOUBLE



WEIGHT 3480 LBS.

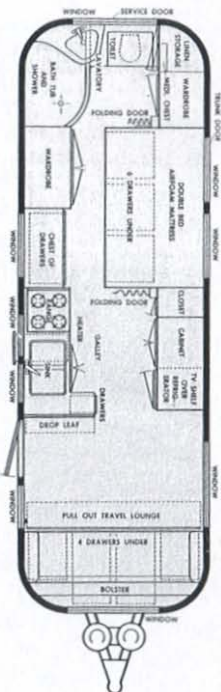
AIRSTREAM FLOOR PLANS
THE 1964 AIRSTREAM FLEET

26 FOOT OVERLANDER TWIN



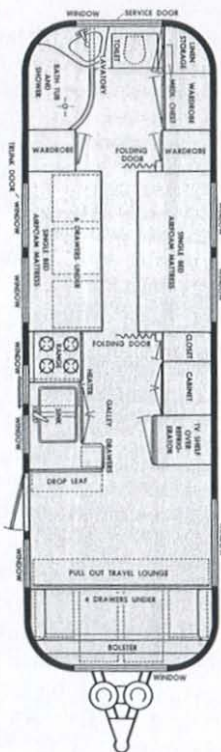
WEIGHT 3930 LBS.

26 FOOT OVERLANDER DOUBLE



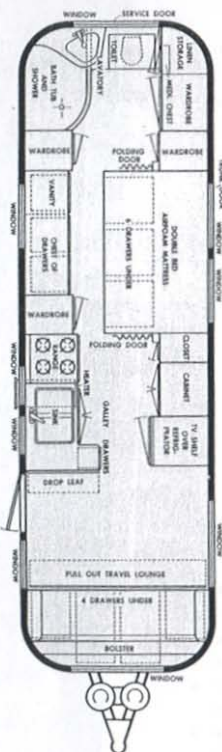
WEIGHT 3930 LBS.

28 FOOT AMBASSADOR TWIN



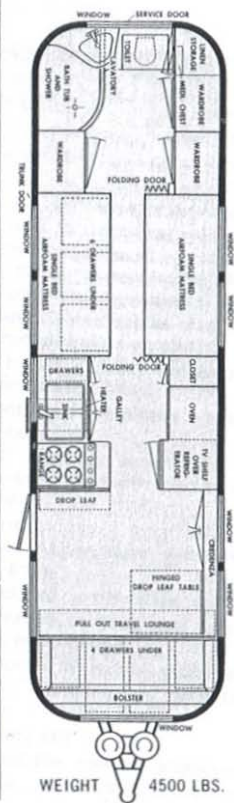
WEIGHT 4280 LBS.

28 FOOT AMBASSADOR DOUBLE



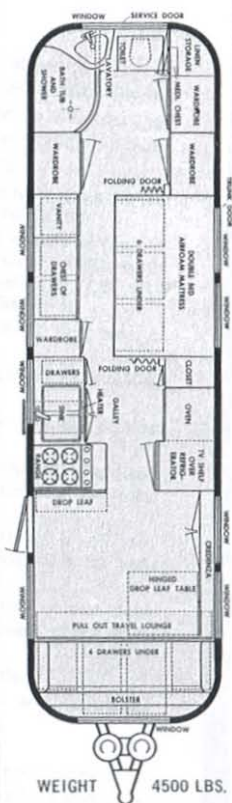
WEIGHT 4280 LBS.

30 FOOT SOVEREIGN TWIN



WEIGHT 4500 LBS.

30 FOOT SOVEREIGN DOUBLE



WEIGHT 4500 LBS.

*The 1964 Airstream fleet offers you a wider selection than any other travel trailer...
13 exciting models raring and daring to go. One of them is meant for you!*

STANDARD SPECIFICATIONS

Every Airstream is built to the same rigid construction standards and must satisfy the travel specifications of the world's most adventurous roamers — the Wally Byam caravanners. Chassis, running gear, body design and basic equipment are uniform throughout all Airstreams, regardless of model or series. All Airstreams are completely self-contained... they have the equipment necessary for extended stays away from standard light, water and sewer connections. The difference between the Land Yacht series and the International Land Yacht series is in the degree of self-containment; amount of accessory equipment included and quality of interior furnishings.

The Airstream Land Yacht series comes equipped with an automatic water system (including 12 volt Marine water pump and 30 gallon polyethylene water tank); univolt electrical system to provide power at all times to all interior lights and fans (in addition to the 110 volt wiring for convenience outlets); 12 volt battery; butane refrigerator; butane water heater; automatic switch-over regulator for the butane tanks; Marine type toilet with spray flushing device to conserve water; and the Airstream sanitar to provide toilet convenience away from a sewer hook-up. Even a sewer hose carrier is included.

The Airstream International Land Yacht series represents, then, the last word in travel luxury. In addition to the basic Land Yacht equipment, it includes: A water purifier; two ceiling fans; two 12 volt outlets for shaver and other appliances; two over-sized butane tanks; a police-type radio antenna; a 12 volt exterior flood light next to the entrance door; a battery condition meter; a battery-operated clock; and such extra luxuries as stainless steel galley sinks; deluxe plumbing hardware; galley hand spray; galley formica splash panel; bedroom wall comfort cover, bedspreads, nylon upholstery; Belgian linen curtains; vinyl floor tile and even deluxe hub caps.

- Patented Air-flow contoured shape
- Exclusive Aero-Stress® all steel undercarriage
- Molded steel bumper, welded to undercarriage
- Exclusive Dura-Torque® rubber torsion bar axles
- Shock Absorbers on all wheels
- 12V Electric brakes on all wheels (can be coordinated with foot brake pedal in car)
- 7:00 x 15 truck-type split rim wheels with nylon tires and tubes (8 ply on all single axles; 6 ply on tandem axles and 19' Globetrotter; 7:50 x 14 4 ply white sidewalls on 17' Bambi II)
- Hand riveted double-shell body of heat treated structural alloy aluminum
- Ribs of stretch-formed structural alloy aluminum
- Contoured aluminum window frames, riveted to body
- Full opening, awning-type windows (jalousie windows used only next to main door on most models)
- Corrosion-proof removable screens in all windows (Slip-in storm windows available for winter travel)
- Insulated combination main and screen door
- Exclusive touch-control fold away steel step, welded to frame
- Anodized aluminum grab handle
- Trunk compartment with lock and insulated door
- Awning rail
- Adjustable, no-draft aluminum roof vents
- Large, adjustable no-draft plastic astrodome vent
- Seamless, dustproof Styrene wheel housing covers

- All-over (entire body, under floor and over wheel housings) 2¼ inch aircraft type fiber-glass insulation
- Plastic grip on jack handle
- Weather-proof exterior 110V outlet
- Single plug car-trailer connector (includes 12V charge line)
- 2" Hitch ball
- Car brake controller
- T.V. lead-in wire in shell
- Univolt service available at all standard roof vents
- Built-in 110V service line (25 feet)
- U.L. Approved electric appliances
- A.S.A. Code-approved wiring system
- Shielded wiring harness for all running, brake and clearance lights
- Interior 110 Volt convenience outlets
- Univolt interior lights (operate on 110V or 12V current)
- 12 volt battery in vented case with automatic circuit breaker
- Automatic circuit breaker on univolt wiring system
- Circuit breaker protection on 110V wiring system
- Water pressure regulator in water inlet line
- 12 Volt Marine water pump (capacity 2½ gallons per minute)
- 30 gallon polyethylene water tank (except in 17' Bambi II in which there is 20 gallon water tank)
- Air vent on water tank
- Water level gauge on water tank
- A.S.A. Code-approved plumbing system
- Swing faucet at galley sinks

- Double galley sinks in all models except 17' Bambi II and 19' Globetrotter
- Combination sink cover and cutting board
- Exclusive airliner bathroom
- Imported water-saver "telephone" shower with shut-off valve at shower head
- Toilet hand spray flushing device
- Marine type toilet
- Fiberglass septic tank of approximately one week capacity
- Sight glass on septic tank
- Drainage drop-out cover cap
- Drainage drop-out elbow for connecting sewer hose
- Built-in sewer hose carrier
- Fiberglass bathtub
- Fiberglass lavatory
- Medicine chest
- Clothes Hamper
- A.S.A. Code-approved butane gas system
- All butane equipment U.L. or A.G.A. approved for use in travel trailers
- Double five gallon butane bottles with rack
- Automatic switch-over bottle regulator (except in 17' Bambi II and 19' Globetrotter with manual regulators)
- Sealed unit, side-vented butane heater (input ratings: 17' Bambi II 7500 B.T.U.; 19' Globetrotter 10,000 B.T.U.; all other models 25,000 B.T.U.)
- In all models except 17' Bambi II and 19' Globetrotter, heater duct to rear with univolt blower and thermostat
- 5.5 cubic foot butane refrigerator (except in 17' Bambi II with 2 cubic foot and 19' Globetrotter with 3.5 cubic foot)

- Four burner butane range (except in 17' Bambi II with three burner butane range)
 - Butane oven and broiler
 - Range vent hood with univolt exhaust fan
 - Nine gallon butane water heater (except in Bambi II with 7 gallon butane water heater)
 - Genuine hardwood veneer furniture and cabinets
 - Lightweight, warp-free hollow core wardrobe doors
 - Positive travel-locks on drawers and doors
 - Drawers of lightweight molded high-impact styrene
 - Front end roof cabinet
 - Spice Rack
 - Magazine Rack
 - Formica covered drop leaf table (except in 17' Bambi II and 19' Globetrotter with folding table; 22' Safari with pull-out table and 30' Sovereign of the Road with fold-away credenza table)
 - Foam rubber travel lounge in front, convertible to double bed with four drawers under
 - 6" Foam rubber mattresses with zippered covers
 - All upholstery scotch-guarded to resist soiling
 - All curtains vat dyed, fade resistant and pre-shrunk
 - All curtains lined (except in 17' Bambi II and 19' Globetrotter)
 - Full length mirror
 - Two folding doors (except in 17' Bambi II, 19' Globetrotter and 22' Safari with one folding door)
 - Inlaid linoleum floor
- *Not available in 17' Bambi II
All specifications subject to change without notice

AIRSTREAM 1964

years ahead in engineering
years ahead in travel pleasure!

1. New Uni-Volt wiring system operates all lights and appliances. Switch from 110 V to 12 V just by flicking the master switch!

2. New airline type bathroom is roomier, more comfortable. All fixtures are boldly sculptured in beautiful, durable fiberglass.

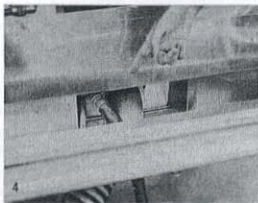
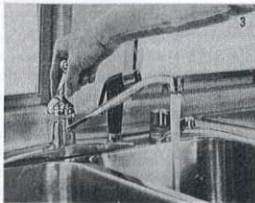
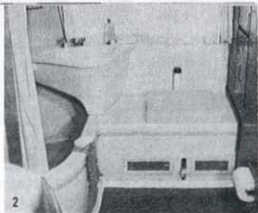
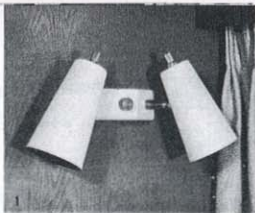
3. New marine water pump silently provides water under constant pressure, in any circumstance. The lightweight polyethylene water tank supplies 30 gallons of tasteless, odorless, clean fresh water. A sight gauge tells you how much fresh water you have on hand.

4. New one-stop service center. Water, electrical and sewer hook-ups, the battery, water pump and septic tank valve are all located in this handy compartment that's protected from dirt and weather.

5. Increased wardrobe and storage space throughout!

6. New drawers are lighter, stronger. Molded of impervious, high impact styrene. Positive locks keep them closed while on the road.

Other exciting new features are: Enlarged holding tank now plumbed to hold wash water too. Battery condition meter tells you how much charge remains in your battery...and many more.



*Travel trailers of the future may someday have
what the 1964 Airstream gives you now!*



The 1964 Airstream has more dramatic engineering improvements than any other single year — improvements you won't see on other travel trailers for years to come! There's just no end to the exciting new features... there's just no end to the pleasure an Airstream will bring. Dream a dream of surf and sunshine and it is yours. Dream a dream of foreign lands and curious customs, it too is yours, for a 1964 Airstream places the whole, wide, wonderful world at your doorstep as no other form of travel can. Inspect the fabulous '64's from top to bottom, inside and out. You'll say Airstream is the most remarkable travel trailer you've ever seen. Here are just a few of the countless improvements: Completely new floor plans and layouts provide 52% more wardrobe space, 30% more shelf space and storage space, 17% more drawer space and 15% more window area! New Uni-Volt wiring system. Spectacular airline type bathroom. New marine

water pump. One-stop service center for all hookups. New high impact styrene drawers are lighter, stronger. New enlarged septic tank. Only Airstream offers the Aerostress chassis, improved Dura-Torque axle and all-important shock absorbers. The entire trailer is now lighter, tows even easier than ever. Whether you're buying your very first trailer or whether you want to trade up to the most superb travel trailer ever built, you'll discover the 1964 Airstream gives you everything you ever wanted. And again in 1964 you can choose from a wider selection than offered by any other travel trailer... 13 thrilling new models from the little Bambi II that now sleeps four to the 30-foot Sovereign of the Road. Any one of them will lead you to adventure. Hitch your heart-strings to the model that's best for you, then head down the highway and make your travel dreams come true!

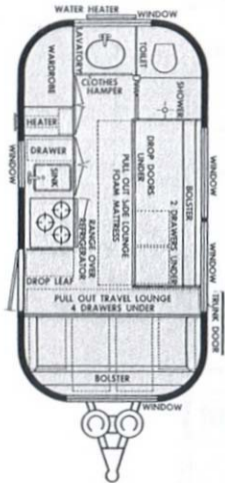


*Airstream is a promise of high adventure and faraway places...
of new friends and interests*

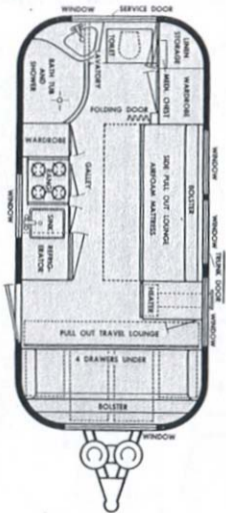
AIRSTREAM INC.

JACKSON CENTER, SHELBY COUNTY, OHIO • 12804 E. FIRESTONE BLVD., SANTA FE SPRINGS, CALIF.

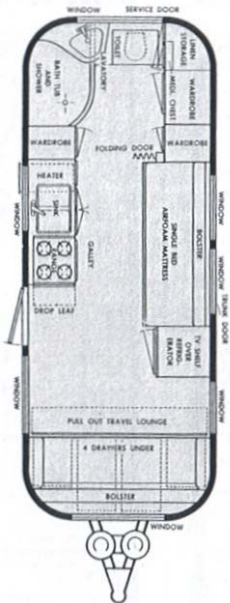
17 FOOT BAMBI II



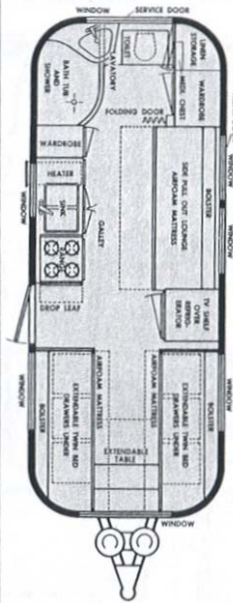
19 FOOT GLOBE TROTTER



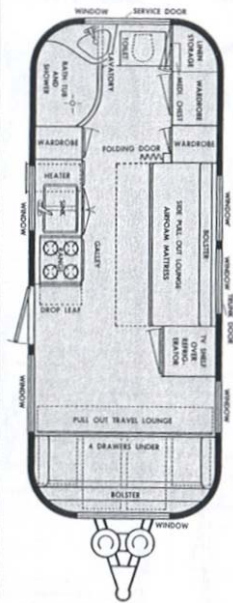
22 FOOT SAFARI SLEEP 2



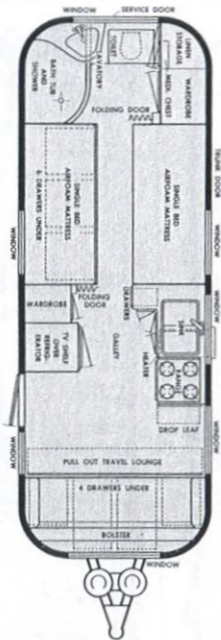
22 FOOT SAFARI TWIN



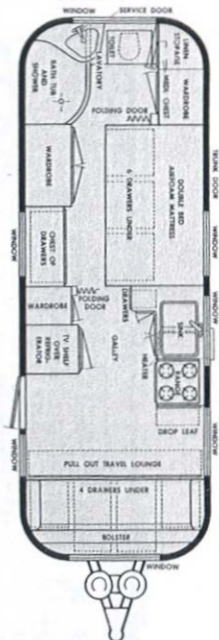
22 FOOT SAFARI DOUBLE



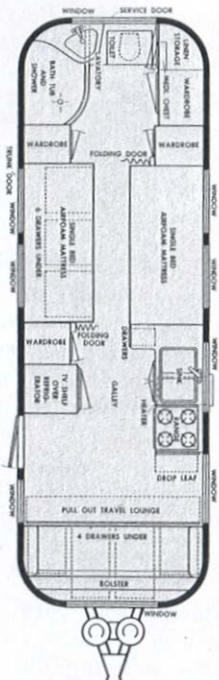
24 FOOT TRADE WIND TWIN



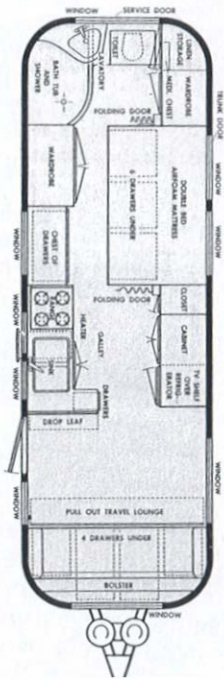
24 FOOT TRADE WIND DOUBLE



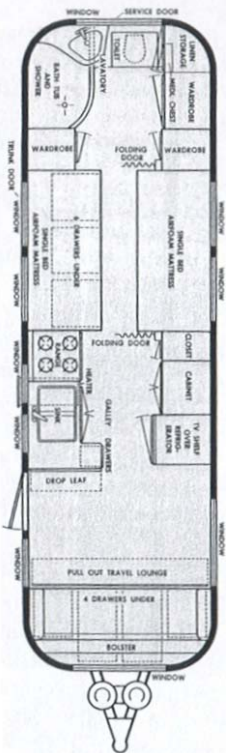
26 FOOT OVERLANDER TWIN



26 FOOT OVERLANDER DOUBLE

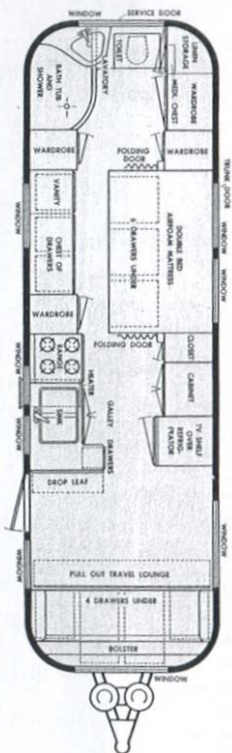


28 FOOT AMBASSADOR TWIN



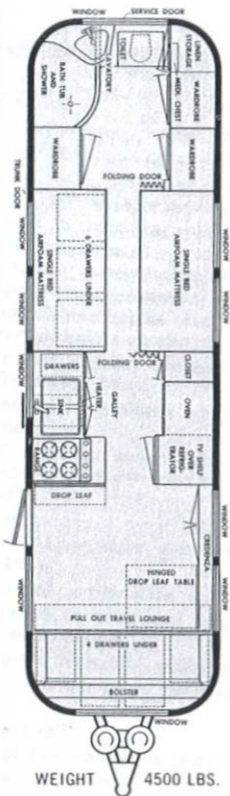
WEIGHT 4280 LBS.

28 FOOT AMBASSADOR DOUBLE



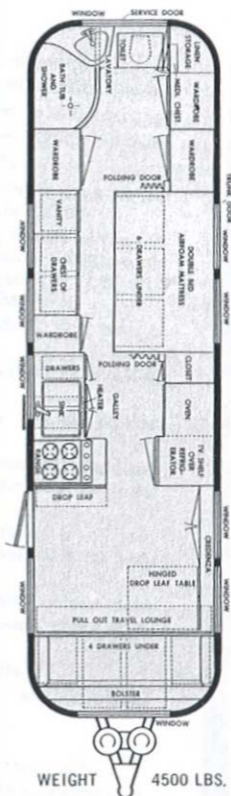
WEIGHT 4280 LBS.

30 FOOT SOVEREIGN TWIN



WEIGHT 4500 LBS.

30 FOOT SOVEREIGN DOUBLE



WEIGHT 4500 LBS.