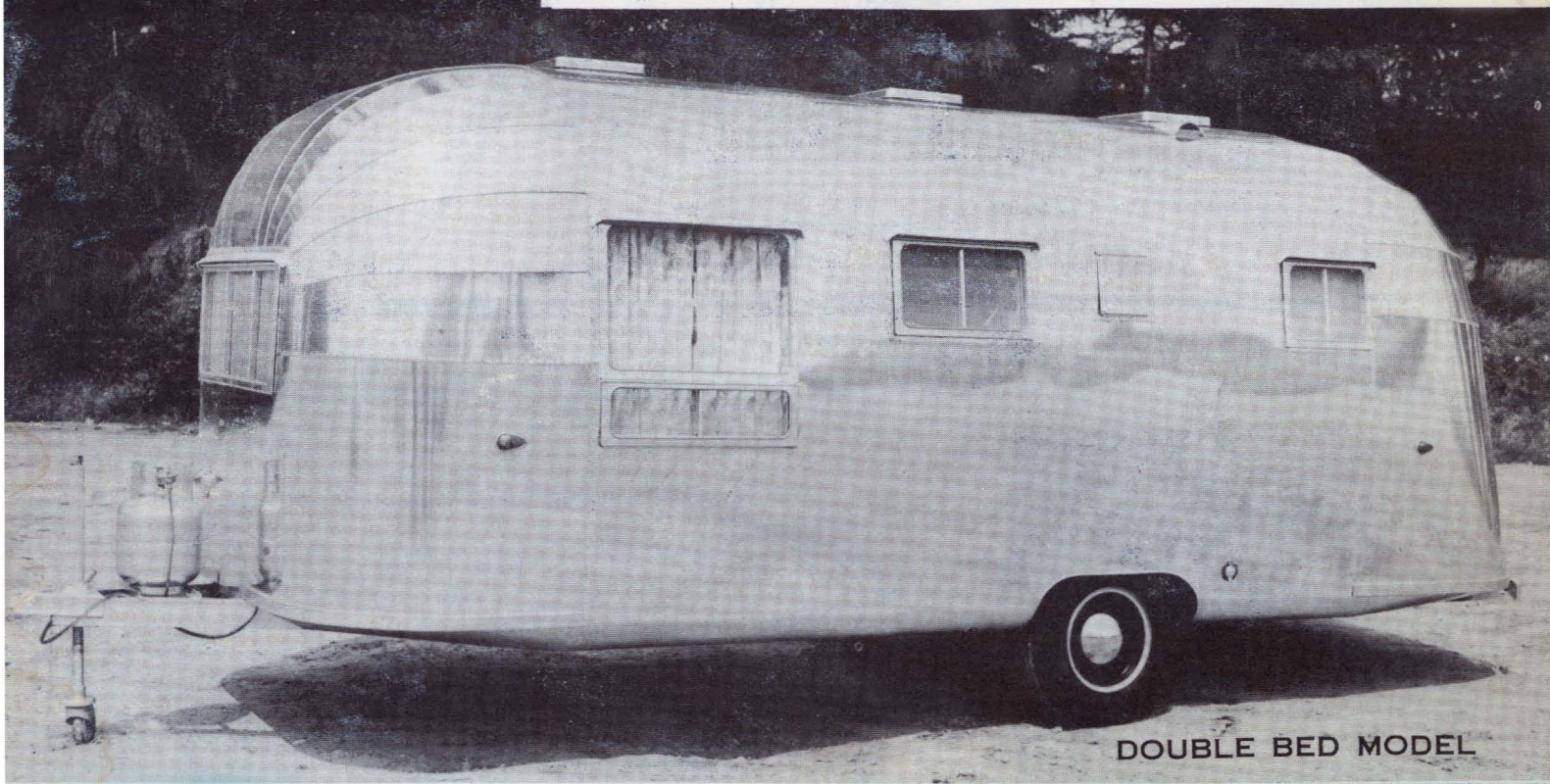


THE
SENSATIONAL
ALL-NEW
AIRSTREAM

22-ft. Flying Cloud



DOUBLE BED MODEL

DESIGNED AND BUILT TO TRAVEL

Spectacular new features have been added to this great Airstream favorite... all designed to give you the utmost in faster, safer, more comfortable travel. It's unusually lightweight and compact, yet offers remarkable spaciousness for all your travel-living needs. You'll be captivated by the Flying Cloud's ingenious interior arrangement and numerous "comfort" features... a great big new bathroom with separate shower and toilet; spacious double bed with specially designed mattress (10-year guarantee); more closet, shelf and drawer space; more extensive use of formica for greater appeal and convenience; double sink; oven and broiler stove; eye-level combination ice-electric refrigerator.

All this plus the famous Airstream engineering features too—all-aluminum, all-riveted, featherweight construction with all-over Aero-core fiberglass insulation. Just hitch the Flying Cloud to your car and you're ready to go at a moment's notice wherever your heart desires. See it, test-ride it and see for yourself!



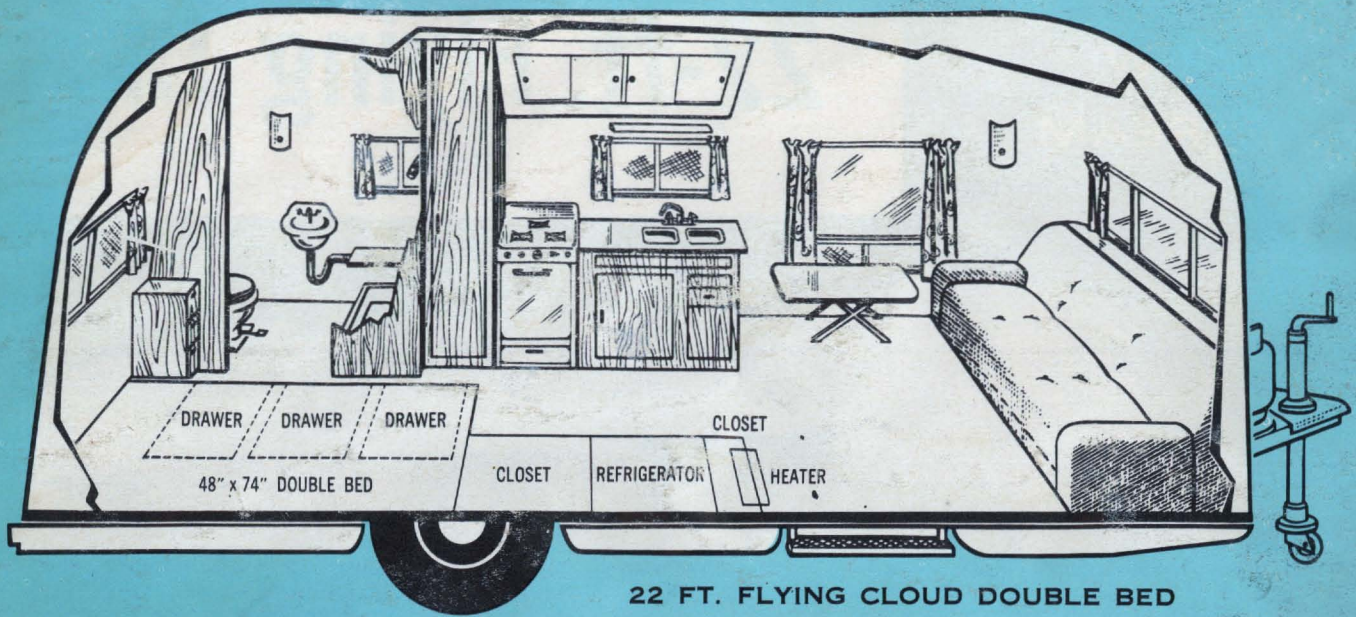
*Airstream — since 1932 the world's
finest lightweight travel trailers*



AIRSTREAM
TRAILERS, INC.

1755 N. MAIN STREET, LOS ANGELES 31, CALIFORNIA

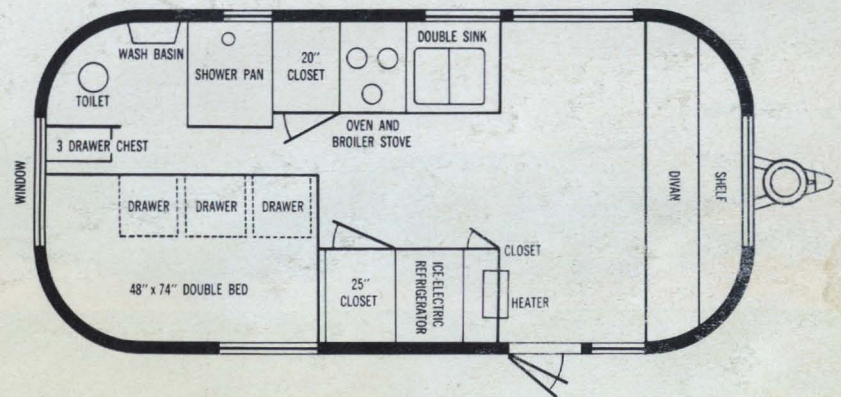
New Design! New Interiors! New Comfort!



22 FT. FLYING CLOUD DOUBLE BED

ALWAYS THESE FAMOUS AIRSTREAM FEATURES:

- all-metal, all-aluminum construction
- all-riveted body
- all-steel undercarriage
- all-over Aero-core fiberglass insulation
- vibration-proof fastenings
- "see-thru" rear vision



SPECIFICATIONS AND STANDARD EQUIPMENT

Overall length—22 ft.

Overall weight—2870 lbs.

Body length—19 ft.

Hitch weight—260 lbs.

Large living room

Separate shower & toilet

Double bed (10-year guarantee)

Comb. ice-electric refrigerator

Wall mount stove fan

Oven and broiler stove

Divan front

Inlaid linoleum

Double sinks

Hot water heater

Gear operated windows

Butane tank

Escape rear window

3 roof vents

Full screen door

Formica galley tops

45" closet space

Broom closet

Medicine cabinet

Aircraft curtains

Touch control built-in step

Warp-free hollow core doors

Porch light

Trunk door

12-ft. awning rail

Electric brakes

Box section frame, 2" axle

Steel bumper

Shock absorbers

700-15 8 ply tires

2" aircraft insulation

Stainless steel door hinges

SINCE 1932 THE WORLD'S FINEST LIGHTWEIGHT TRAVEL TRAILERS

AIRSTREAM TRAILERS INC. • 1755 N. MAIN ST. • LOS ANGELES 31, CALIFORNIA