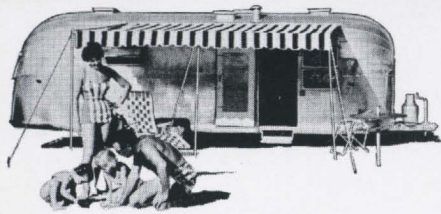


AIRSTREAM
TRAVEL TRAILER

22 FT. CARAVANNER

SUPREMACY

*airstream's pre-eminence
in travel trailers is
unsurpassed by any product
in any industry. When
you own an airstream,
you know . . . and the world
knows . . . you own the finest
travel trailer built.*



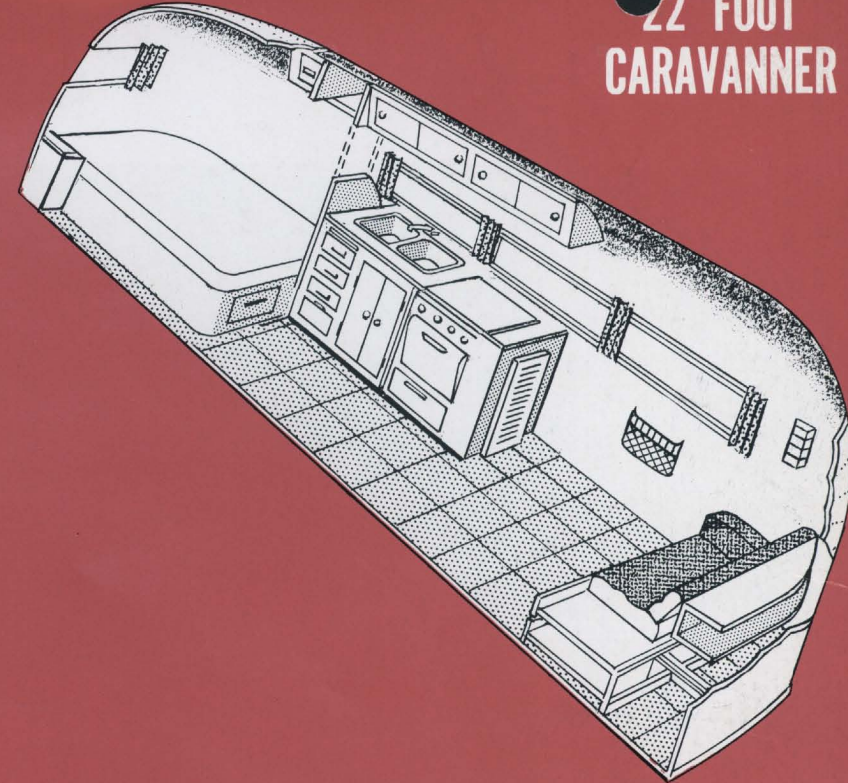
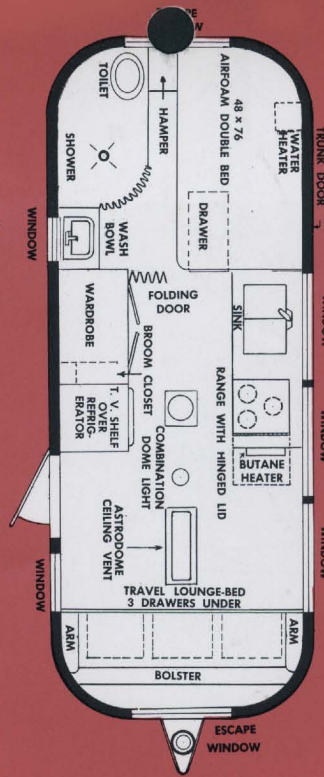
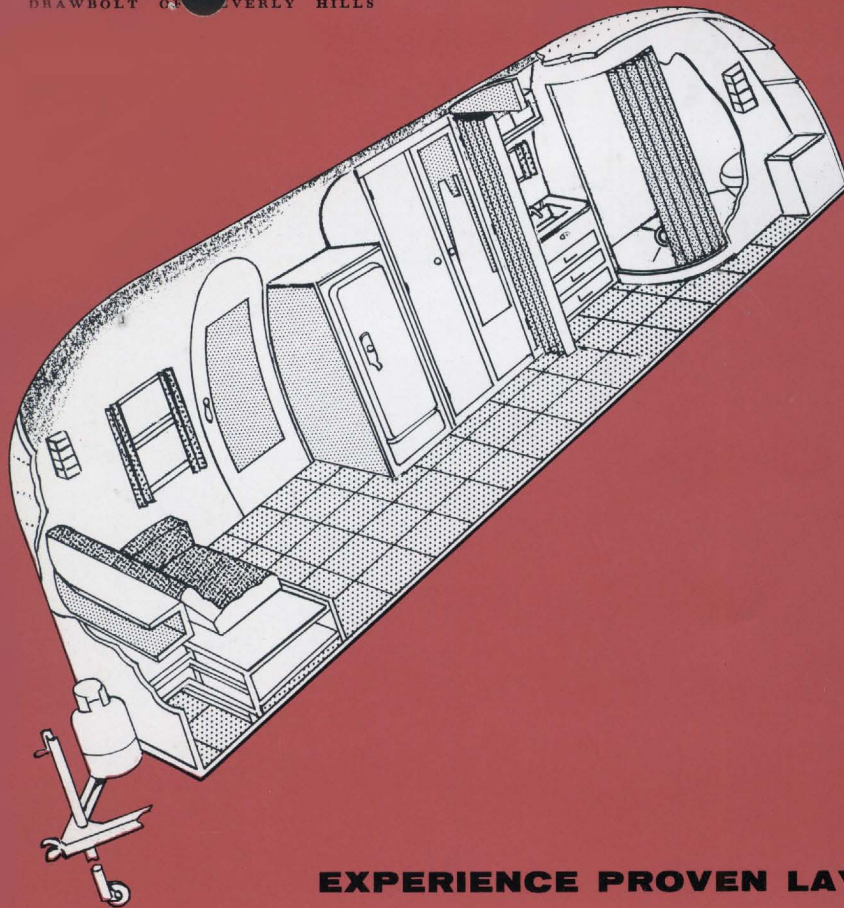
*the standard of excellence
in lightweight travel trailers*

The Caravanner takes its name from the adventure-laden, world-wide Wally Byam Caravans and has lived up to the name in every part of the globe. Travel-tested Airstream construction and conveniences assure the Caravanner's owner easy towing, good handling and all the comforts when parked. Airstream optionals enable you to go anywhere your heart desires, visit the places you've dreamed of effortlessly, care-free: Refrigerator, pressurized hot and cold water, heat, lights, shower, toilet, all independent of outside sources. The Caravanner's comfortable airfoam double bed, convertible couch and a folding partition-door make it ideal for four. Extra windows and vents insure ventilation and light interior, fiberglass insulation guards against extremes of heat and cold. The experience of seasoned travellers has gone into the floor plan and arrangements of this sparkling 22 footer so that you will be "at home" wherever the spirit of travel-adventure leads you.



AIRSTREAM
TRAILERS, INC.

JACKSON CENTER - SHELBY COUNTY, OHIO



EXPERIENCE PROVEN LAYOUTS WITH CARAVAN TESTED EQUIPMENT

ALWAYS THESE FAMOUS AIRSTREAM FEATURES...

- all steel undercarriage
- structural alloy aluminum shell frame
- hand riveted double shell structural alloy aluminum body
- all-over 2 in. aircraft type fibreglas insulation
- vibration-proof fastenings
- see-thru safe rear vision
- 6 in. airfoam mattresses on all beds
- shock absorbers on all wheels

The ultra-sleek, streamlined appearance of Airstream travel trailers is due in part to the use of jet plane type "stretch-formed" front and rear panels (patent pending). This exclusive process distinguishes Airstream from any other trailer and guarantees the strongest possible lightweight construction and quality unmatched in the industry.

Overall length — 22 ft.
 Body length — 19 ft.
 Overall weight — 2,800 lbs.
 Hitch weight — 270 lbs.
 Comfortable Airfoam Travel Lounge converts to double bed.
 48" x 76" Airfoam double bed.
 Marine type flushing toilet, shower and lavatory.
 Electric water heater.
 Drop-leaf table.
 Butane heater with blower
 Double sink with swing faucet.
 Combination 5.6 cu. ft. ice-electric refrigerator with freezer.
 Butane range, 3 burner, oven, broiler.

Imported hardwood furniture.
 Spacious wardrobe and closet for household appliances.
 12 volt battery light.
 Inlaid linoleum tiled floors.
 8 clearview, full-opening windows with removable screens.
 3 roof vents, power fan in center vent. Large plastic Astro-Dome vent in front.
 Warp-proof hollow core cabinet doors.
 Touch control, built-in step.
 Butane tank, rack and regulator.
 Imported "Sta-Closed" closet catches.
 Porch light. 12' awning rail.
 Waterproof 110 volt electrical outlet.

Trunk compartment.
 Steel bumper.
 Electric brakes, can be coordinated with foot brake pedal in car.

OPTIONAL CONVENIENCE FEATURES

In addition to pressure water system, septic tank, gas refrigerator and gas water heater . . . a great number of other optional extras are available to make your Airstream even more self-contained and convenient. See your dealer for full particulars.

SINCE 1932 THE WORLD'S FINEST LIGHTWEIGHT TRAVEL TRAILERS