

TABLE OF CONTENTS

SECTION I LIMITED TRAILER

A through C

Appliances

Air Conditioner	I-1
Furnace	I-1
Microwave	I-1
Fireplace	I-1
Range	I-2
Refrigerator	I-2
Water Heater	I-3

Body

Slide-out mechanism	I-4
End shell, aft	I-5
End shell, front	I-7
Roof	I-9
Slide-out room	I-11
Roadside wall, 34ft	I-13
Curbside wall, 34ft	I-15
Roadside wall, 31 ft	I-17
Curbside wall, 31ft	I-19
Roadside wall, 30ft	I-21
Curbside wall, 30ft	I-23
Body interior	I-24

Chassis

A-frame	I-25
Power jack	I-27
Gas bottle rack	I-28
Tool box, A-frame cover, Spare tire Bracket	I-28
Step	I-31
Outrigger/ underbelly	I-33
Stabilizing Jacks/below floor storage	I-35
Axles/shocks/wheels	I-35
Brakes	I-36

TABLE OF CONTENTS

SECTION II

D through E

Decals	II-1
Exterior trim	II-3
Doors/windows/ awnings	
Doors	II-4
Windows	II-6
Awnings	II-7
Drapes/Shades/Valances	
Drapes	II-8
Valances	II-10
Shades	II-11
Electrical	
110volt	II-12
12 volt	II-13
12 volt switches	II-15
Exterior lights	II-16
Entertainment	
Radio , TV , Antenna , Video	II-17

TABLE OF CONTENTS

SECTION III

F

FASTENERS

Rivets	III-1
------------------------------	-------

FLOOR COVERING

Carpet	III-3
Mats	III-3

Furniture

Cabinet doors	III-4
Door frames, mirrors	III-5
Miscellaneous doors	III-6
Drawer faces	III-7
Drawer boxes	III-8
Rear bedroom	III-9 & III-10
Bathroom	III-11 thru III-13
Galley	III-15 thru III-20
Lounge	III-21 thru III-25

SECTION IV-Limited

H

HARDWARE

Exterior locks/hinges	IV-1
Window	IV-5
Rock guard	IV-6
Interior latches/hinges	IV-7
Drawer slides/bath accessories/table	IV-10
Miscellaneous	IV-11
Awning	IV-13
Slide out paddle latch	IV-14

TABLE OF CONTENTS

SECTION V LIMITED L THROUGH Z

LABEL AND TAGS	V-1
OPTIONS	V-2
PLUMBING	
LPG	V-3
Fresh water: fittings , tanks , faucets	V-4 thru V-9
Drain: fittings , sinks , toilet , tanks	V-10 thru V-18
SAFETY	V-19
SEALER/GASKETS/PAINT	V-20
UPHOLSTERY/FOAM/MATTRESSES	V-21 thru V-23
VENTS/ FANS	V-24
WOOD/LAMINATES/INTERIOR TRIM	V-25 thru V-27

2001 LIMITED TRAILER

APPLIANCES

AIR CONDITIONER, DUO-THERM

690323-32	Air conditioner, Duo Therm w/heat pump
690323-31	Thermostat
690380-03	Air box, polar white
385582-01	Decal, Airstream w/bar
690323-100	Shroud, exterior, Penquin air conditioner
201809	Pan, air conditioner drain

FURNACE, HYDROFLAME

690274	Furnace, Hydroflame, #8535-IV, 34,000BTU
690274-06	Mounting flange
690274-09	Door exterior, Hydroflame
601244-03	Register, rotaire, black
600247	4" duct hose, flexible
690274-102	Module board, furnace
511228	Thermostat, off white
600193	2" duct, flexible hose

MICROWAVE

690345-01	Microwave, convection, Sharp
690345-03	Trim ring, convection microwave
690407-01	Microwave oven, Dometic
690407-02	Trim kit, Dometic microwave
690248-01	Fireplace assy., electric
690248-02	Trim polished brass

2001 LIMITED TRAILER

APPLIANCES

MAGIC CHEF RANGE

690396-02	Range top, 3 burner
690396-01	Range, 3-burner w/oven
690396-03	Range cover, Bifold
964383-02	Range covers, Corian, set

DOMETIC REFRIGERATOR

690425-01	Refrigerator, NDR 1062,2-way, RH, 34ft.
690425-02	Refrigerator, NDR 1062,2-way, LH, 31&30 ft.
690415	Kit, dairy, meat and ice cube tray
801225-014	Oak refrigerator door insert 15.5x20.38
801225-034	Oak refrigerator door insert 38.38x20.38
104439	Louvered panel, exterior access door
101394	Cover, refrigerator roof vent, large
100341	Vent collar w/screen, refrigerator, large

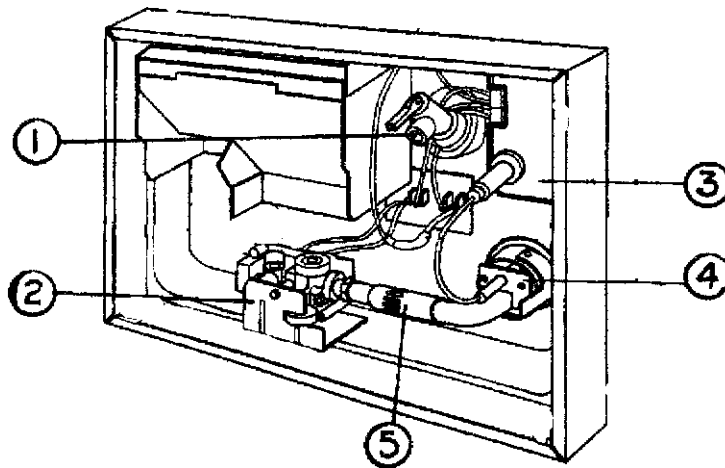
2001 LIMITED TRAILER

APPLIANCES

ATWOOD WATER HEATER, GC6AA-9E

690405	Water heater, Atwood, elec.ignition, 110 volt/gas
500933	Switch, water heater, electronic
690209	Access cover, brushed aluminum
510514	Switch, 110v, 3 way, priority (water heater/micro-wave) CSA only

Front of water heater

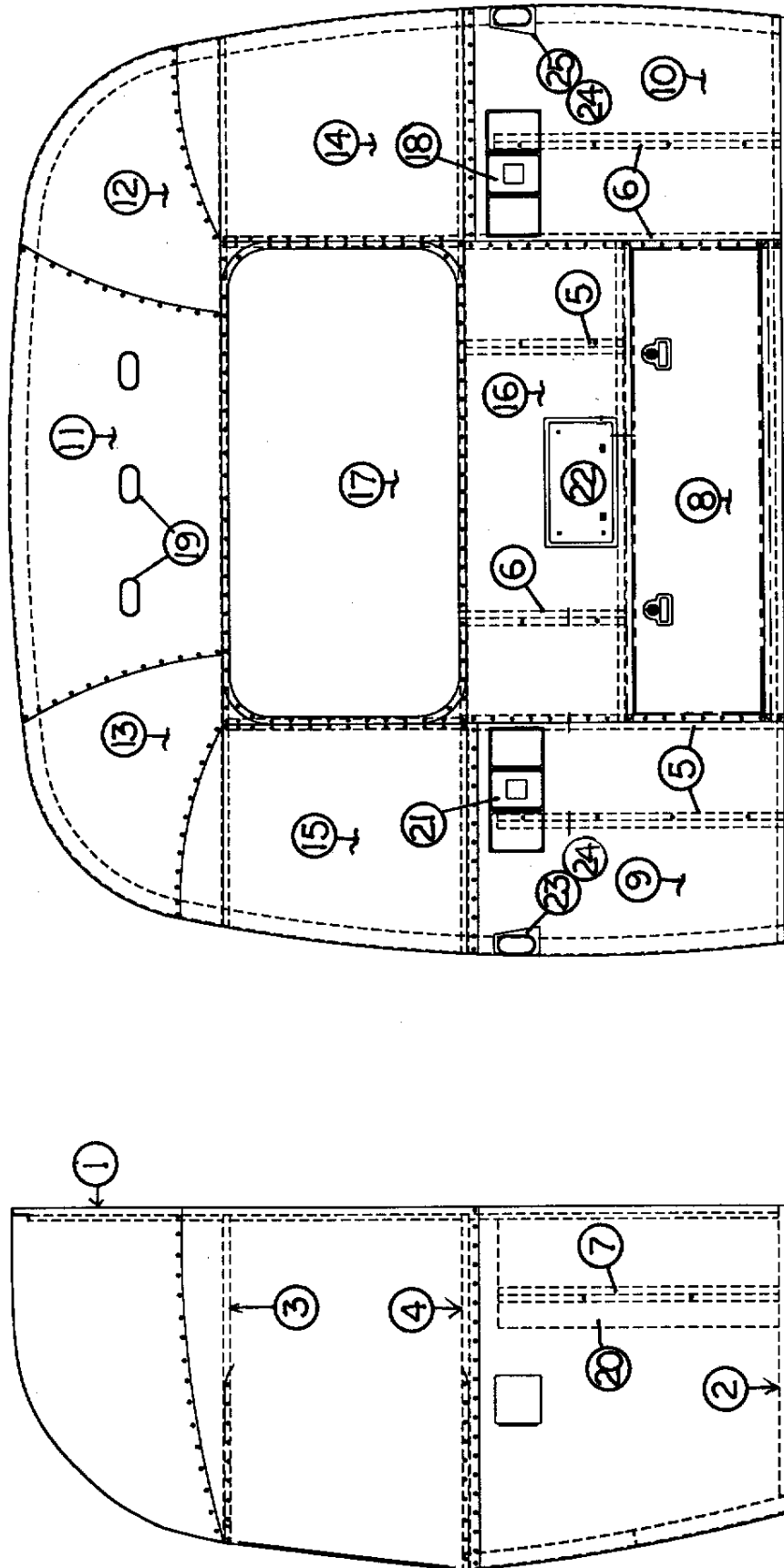


1) 091604	Relief valve, pressure/temperature
2) 093870	Solenoid valve
3) 093865	Circuit board
4) 093868	Spark probe
5) 092615	Main burner

Back of water heater

091160	heating element, 110volt
091873	ECO thermostat
091092	On/off switch, 110Volt

2001 LIMITED TRAILER

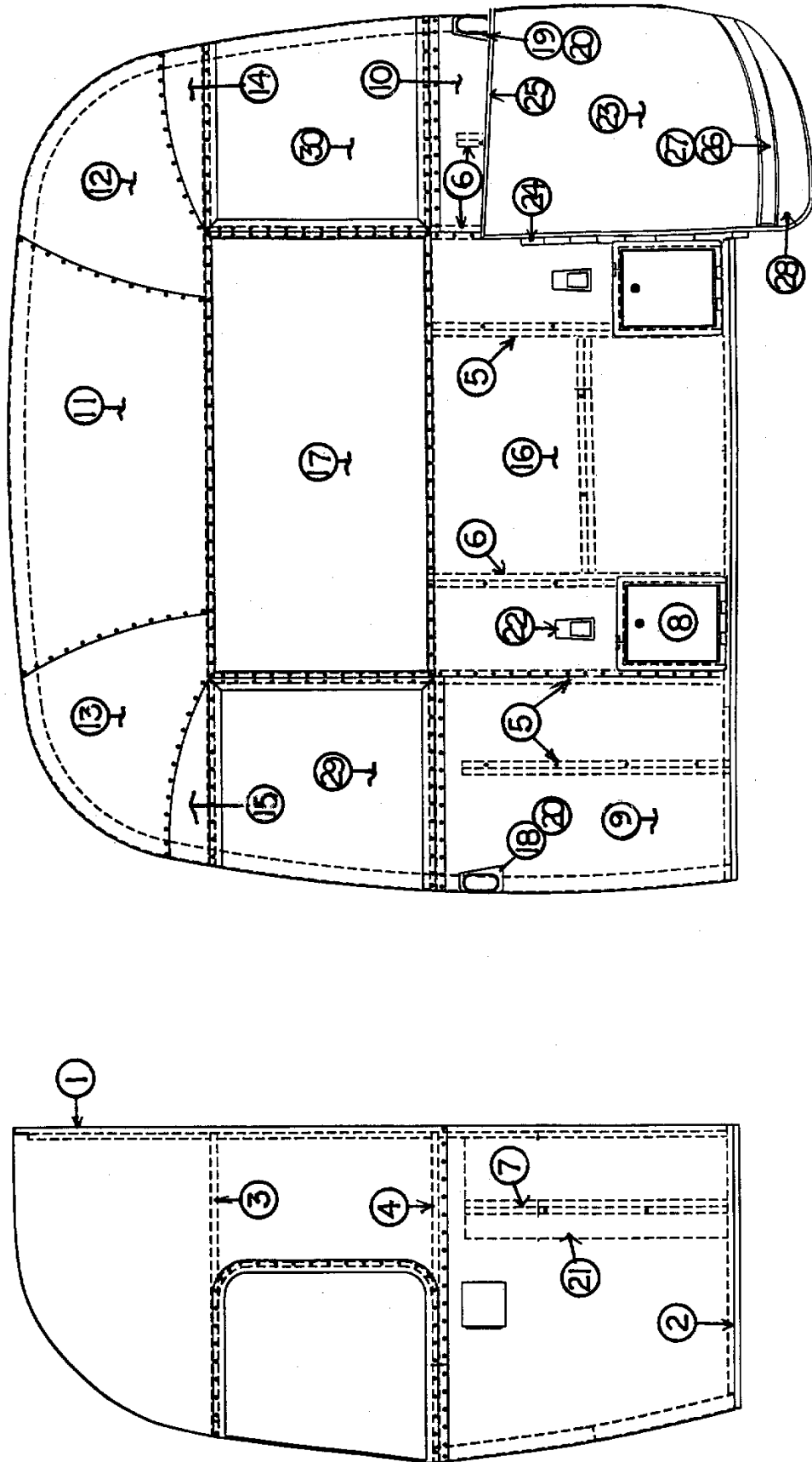


2001 LIMITED TRAILER

BODY-AFT END

921161-10	End shell complete, rear
1) 114670	End bow
2) 114676	Floor bow
3) 114678	Upper window bow
4) 114677	Lower window bow
5) 114505-01	Support, lower end, LH
6) 114505-02	Support, lower end, RH
7) 101315	Brace, vertical rear
8)921159	Trunk door assembly, twin bed only
9) 114895	Segment #29
10) 114894	Segment #28
11) 114893	Segment #25
12) 114890	Segment #26
13) 114891	Segment #27
14) 114889	Segment, center right
15) 114888	Segment, center left
16) NPN	Alum. sheet, 050x19.0x51.0(cut from 114880)
17) 371348-02	Window, rear escape
18) 962169-02	Taillight complete, CS
19) 510111	Clearance light, red
20) NPN	Alum. Sheet, 040x12.0x29.0(cut from 114880)
21) 962169-01	Taillight complete, RS
22) 201954	License plate housing, black
23) 101178	Base, clearance light casting, RS rear
24) 510111	Clearance light, red
25) 101177	Base, clearance light casting, CS rear

2001 LIMITED TRAILER

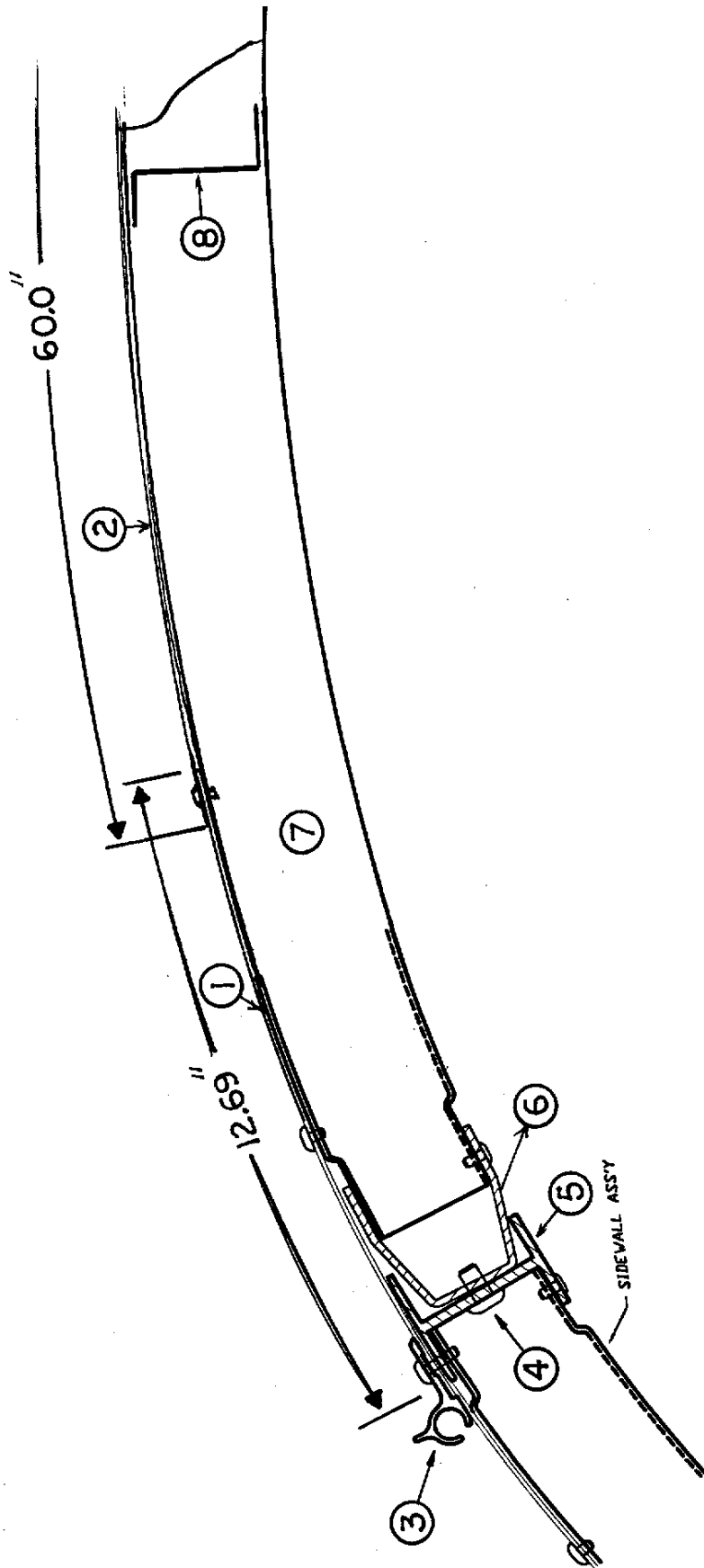


2001 LIMITED TRAILER

BODY-FRONT END

921160-03	End shell complete
921162-11	End shell complete, trailer w/slide out (not shown)
1)114670	End bow
2)114676	Floor bow
)114678	Upper window bow
4)114677	Lower window bow
5)114505-01	Support, lower end,LH
6)114505-02	Support, lower end,RH
7)101315	Brace, vertical rear
8)109852-01	Battery box assembly
9)114895	Segment #29
10)114894	Segment #28
11)114893	Segment #25
12)114890	Segment #26
3)114891	Segment #27
14)114889	Segment, center right
15)114888	Segment, center left
16) NPN	Alum.sheet,.050x34.75x51.(cut from 114880)
17)371346-02	Window, front, dark glass
18)101178	Base , lamp, cast polished, RS
19)101177	Base, lamp, cast polished, CS
20)510112	Clearance light, amber
21)) NPN	Alum. sheet,.040x12.0x29.0(cut from 114880)
22)510732	Utility light #1327
23)685276-100	Wrap protector, SS, specify side
23a)203242-01	Wrap protector, acrylic, RS trailer w/slide out
23b)203242-02	Wrap protector, acrylic, CS trailer w/slide out
24)381605-01	Hinge, stainless, wrap protector
25)100742-01	Extrusion, mirror/wrap protector trim
26)114460	Extrusion, rub rail
27)201763-01	Insert, rub rail
28)200542	Underbelly wrap, RS wrap protector
28a)200543	Underbelly wrap, CS wrap protector
29) 372089	panoramic window, CS front
30) 372088	panoramic window, RS front

2001 LIMITED TRAILER



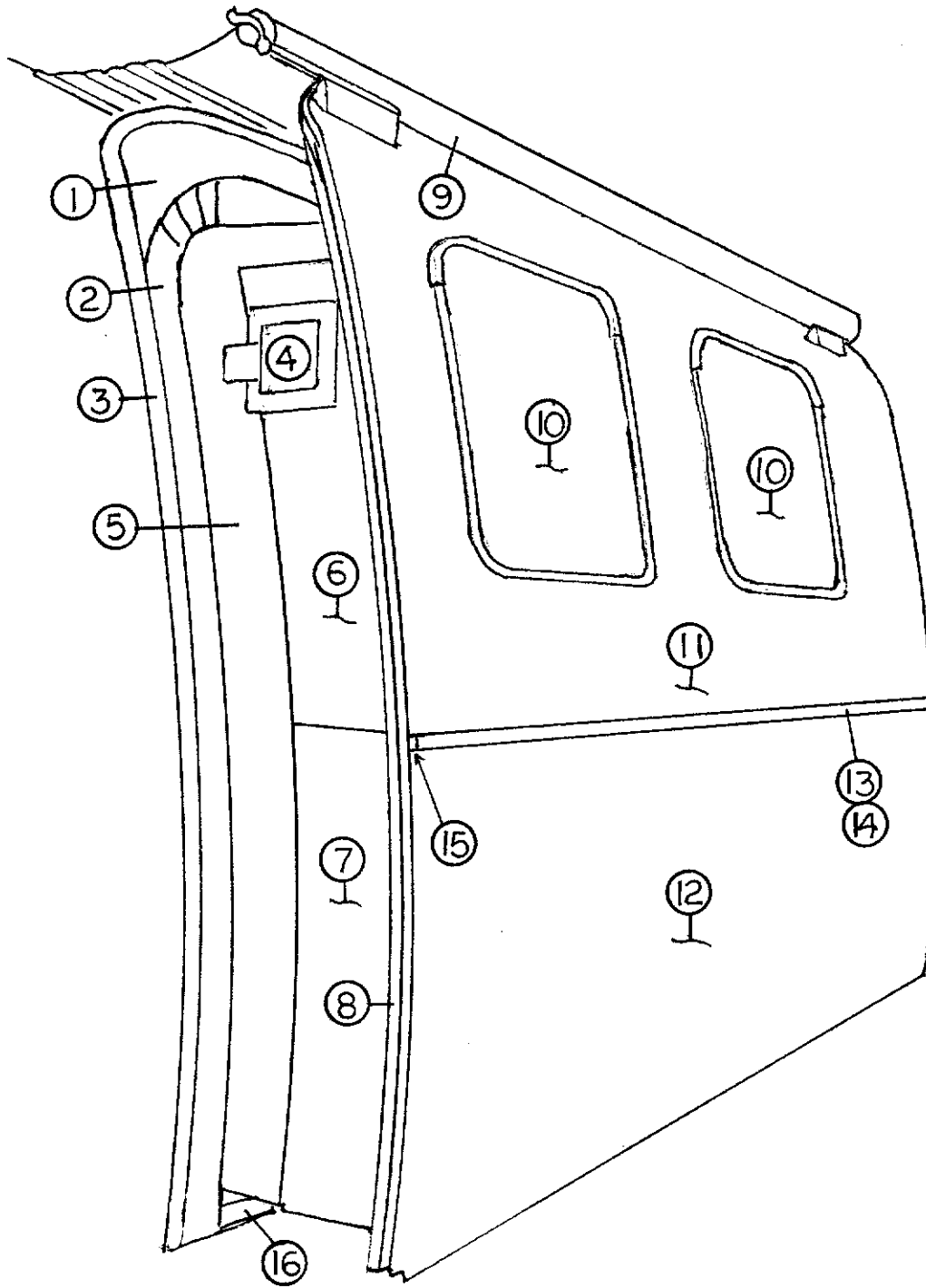
2001 LIMITED TRAILER

BODY

ROOF-END VIEW

1)114669-307	Alum. sheet,white,.032 x 12.69 x 307"
2)114489-307	Alum. sheet,white,.032 x 60.0 x 307",34ft
3)114290-03	Extrusion, awning/drip rail
4)340123-02	Rivet,Huck,3/16 x 1/2"
5)104707-05	Extrusion." I" beam
6)114987-03	Extrusion, roof corner
7)114668	Roof bow
8)104408	Extrusion, Z bar, horizontal

2001 LIMITED TRAILER



2001 LIMITED TRAILER

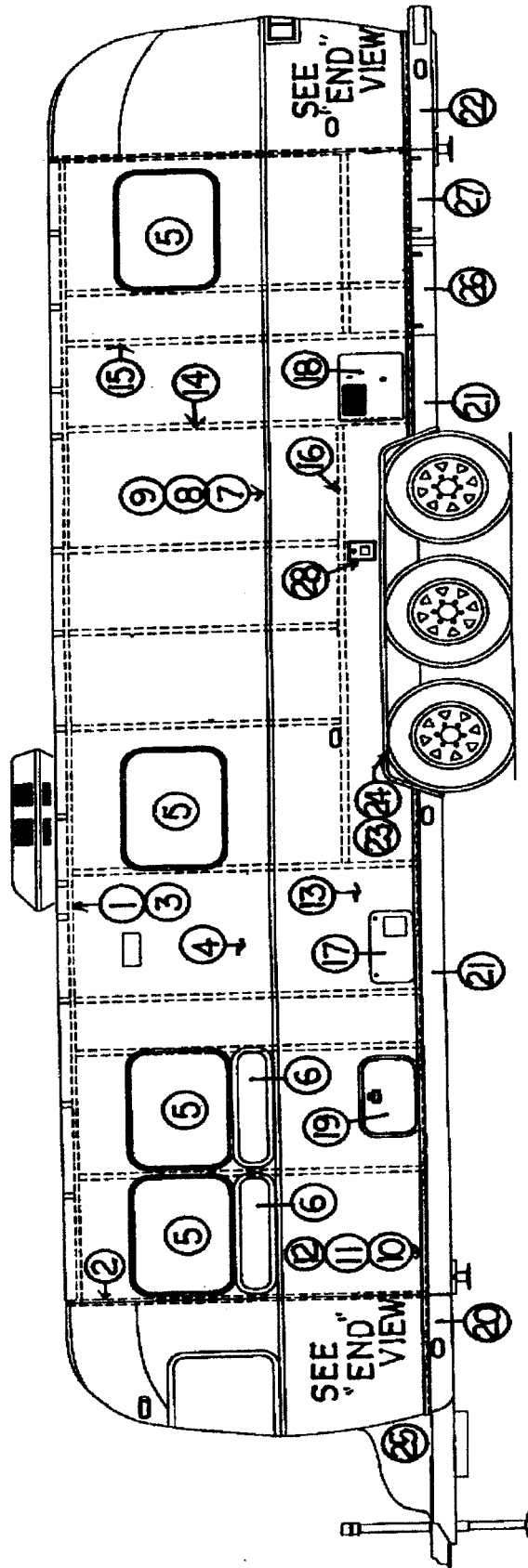
SLIDE OUT ROOM

1) 964751	Jamb assembly, fiberglass
2) 381669-01	Gasket, wiper seal assembly (corner pre-formed)
3) 114974-01	Trim, exterior jamb, slide out room, RH
3a) 114974-02	Trim, exterior jamb, slide out room, LH
3b) 114930	Trim, exterior jamb, S/R room, top center
4) 952648-01	Travel lock, forward
4a) 952648-02	Travel lock, aft
5) 964752	Room insert, fiberglass
6) 114990-01	End skin, forward
7) 114990-02	End skin, aft
8) 381633	Gasket, seal, room to exterior and room to interior
9) 702949-05	Cover, roll out awning
9a) 702949-01	Mounting hardware, S/O room roll out cover
10) 371324-02	Window, 30" opening
11) 114934-02	Outer skin, formed, upper slide out
12) 114933-02	Outer skin, formed, lower slide out
13) 114328	Extrusion, belt line trim
14) 201912	Molding, chrome, belt line insert
15) 114417	Casting, closeout, belt line end
16) 381589	Gasket, floor wiper

Not shown

203243	Guide blocks, nylon
965155	Spacer block w/ magnet
381728	Rubber wiper seal, 2.5" wide
801298	Facia board, upper
371379	30' opening window, tall glass only
372215	Screen, 30" opening, tall
114939-01	Rib, slide out insert, R.H.
114938-02	Rib, slide out insert, L.H.
801305-00Z	Spacer block, slide out
381753	Cove molding, 1.98" wide

2001 LIMITED TRAILER



2001 LIMITED TRAILER

BODY-34FT LIMITED, RS

(Hardware such as hinges, locks and latches are located in the **hardware** section of this book)

1)114290-03	Extrusion/drip rail
2)114670	Rib, end bow
3)104707-01	Extrusion," 1" beam
4)114880-307	Aluminum sheet,upper,.040 x 51 x 307"
5)371324-02	Window,30in. opening
6)371270	Window,30in.,stack,stationary
7)114328	Extrusion, belt line
8)201912	Molding, chrome, belt line
9)100034	"Z" bar,48"
10)114460	Extrusion, rub rail
11)201763-01	Insert, rub rail,chrome,1"
12)100986	Floor channel
13)114879-307	Aluminum sheet,lower,.040 x 33 x 307"
14)114387-01	Bow, Z rib, RH
15)114387-02	Bow, Z rib, LH
16)100986	Wheel well stiffener(floor channel)
17)690274-06	Cover, Hydroflame furnace
18)690209	Cover, brushed aluminum, Atwood
19)100679	Access door w/jamb
20)200542	Banana wrap, RS front
21)101131-01	Underbelly wrap,.024 x 22.5,pewter
22)201974-01	Bumper, rear corner, RS
23)114003-01	Wheel well trim, inner, tri-axle
24)114004-01	Wheel well trim, outer, tri-axle
25)201981	Bottle cover, LP, Limited
26)114496-02	Door, utility compartment
27)114496-01	Door, power cord compartment
28)601194	Water fill w/lock

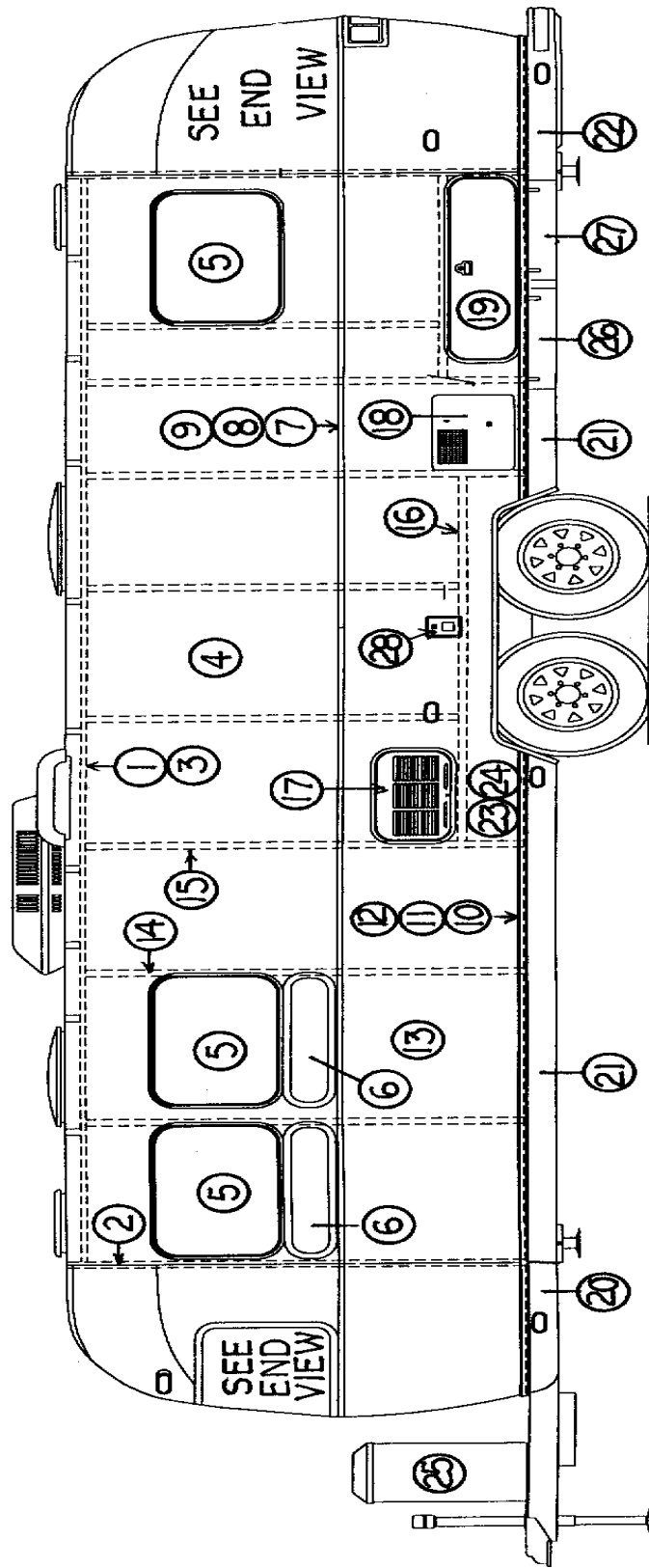
2001 LIMITED TRAILER

BODY-34FT LIMITED,CS

(Hardware such as hinges, locks and latches are located in the **hardware** section of this book)

1)114290-03	Extrusion, awning/drip rail
2)114670	Rib, end bow
3)104707-01	Extrusion, "I" beam
4)114880-307	Aluminum sheet, upper, .040 x 51 x 307"
5)371324-02	Window, 30in. opening
6)371270	Window, 30in., stack, stationary
7)114328	Extrusion, belt line
8)201912	Molding, chrome, belt line
9)100034	"Z" bar, 48"
10)114460	Extrusion, rub rail
11)201763-01	Insert, rub rail, chrome, 1"
12)100986	Floor channel
13)114879-307	Aluminum sheet, lower, .040 x 33 x 307"
14)114387-01	Bow, Z rib, RH
15)114387-02	Bow, Z rib, LH
16)100986	Wheel well stiffener(floor channel)
17)104439	Louvered panel, refrigerator access door
18)922288-01	Door, side access, long, twin only
19)371285-01	Window, stationary, 30in.
19a)371323-02	Window, stationary, 18in. (used only w/slide puts)
20)200543	Banana wrap, CS front
21)101131-01	Underbelly wrap, .024 x 22.5, pewter
22)201974-02	Bumper, rear corner, CS
23)114003-01	Wheel well trim, inner, tri-axle
24)114004-01	Wheel well trim, outer, tri-axle
25)201981	Bottle cover, LP, Limited
26)114496-02	Door, utility compartment
27)371319-05	Window, main door
28)110067-04	Main door assembly, Limited
29)114654	Screen door assembly
30)114652	Main door jamb, formed

2001 LIMITED TRAILER



2001 LIMITED TRAILER

BODY-31FT LIMITED, RS, ND

(Hardware such as hinges, locks and latches are located in the **hardware** section of this book)

1)114290-03	Extrusion, awning/drip rail
2)114670	Rib, end bow
3)104707-01	Extrusion, "I" beam
4)114880-262	Aluminum sheet, upper, .040 x 51 x 262"
5)371324-02	Window, 30in. opening
6)371270	Window, 30in., stack, stationary
7)114328	Extrusion, belt line
8)201912	Molding, chrome, belt line
9)100034	"Z" bar, 48"
10)114460	Extrusion, rub rail
11)201763-01	Insert, rub rail, chrome, 1"
12)100986	Floor channel
13)114879-262	Aluminum sheet, lower, .040 x 33 x 262"
14)114387-01	Bow, Z rib, RH
15)114387-02	Bow, Z rib, LH
16)100986	Wheel well stiffener(floor channel)
17)104439	Louvered panel, refrigerator access door
18)690209	Cover, brushed aluminum, Atwood
19)922288-01	Door, side access, long, twin only
20)200542	Banana wrap, RS front
21)101131-01	Underbelly wrap, .024 x 22.5, pewter
22)201974-01	Bumper, rear corner, RS
23)114003-02	Wheel well trim, inner, tandem axle
24)114004-02	Wheel well trim, outer, tandem axle
25)104265	Bottle cover, LP, w/o decals
26)114496-02	Door, utility compartment
27)114496-01	Door, power cord compartment
28)601194	Water fill w/lock

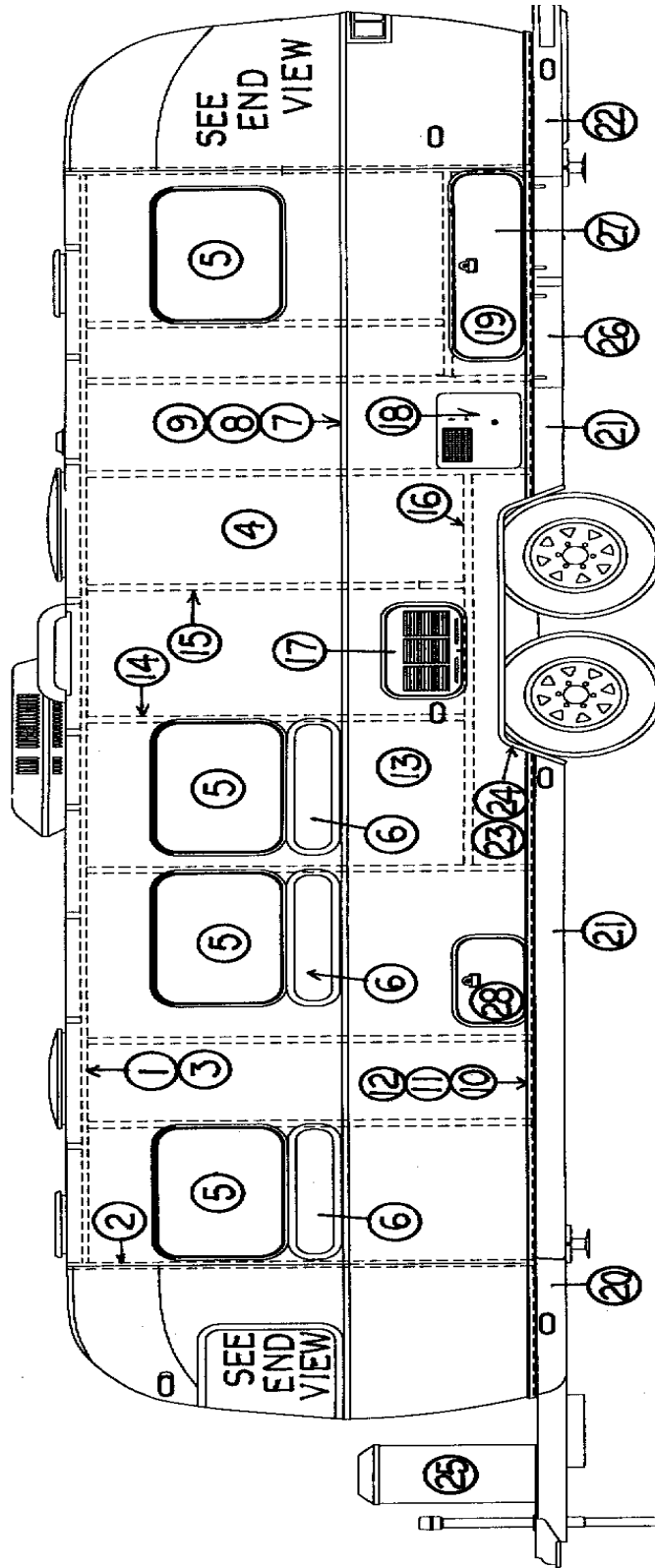
2001 LIMITED TRAILER

BODY-31FT LIMITED, CS, ND

(Hardware such as hinges, locks and latches are located in the **hardware** section of this book)

1)114290-03	Extrusion, awning/drip rail
2)114670	Rib, end bow
3)104707-01	Extrusion, "I" beam
4)114880-262	Aluminum sheet, upper, .040 x 51 x 262"
5)371324-02	Window, 30in. opening
6)371269	Window, 18in., stack, stationary
7)114328	Extrusion, belt line
8)201912	Molding, chrome, belt line
9)100034	"Z" bar, 48"
10)114460	Extrusion, rub rail
11)201763-01	Insert, rub rail, chrome, 1"
12)100986	Floor channel
13)114879-262	Aluminum sheet, lower, .040 x 33 x 262"
14)114387-01	Bow, Z rib, RH
15)114387-02	Bow, Z rib, LH
16)100986	Wheel well stiffener(floor channel)
17)690274-06	Cover Hydroflame furnace
18)922288-01	Door, side access, long, twin only
19)371323	Window, 18in. opening
20)200543	Banana wrap, CS front
21)101131-01	Underbelly wrap, .024 x 22.5, pewter
22)201974-02	Bumper, rear corner, CS
23)114003-02	Wheel well trim, inner, tandem
24)114004-02	Wheel well trim, outer, tandem
25)104265	Bottle cover, LP, w/o decal
26)114496-02	Door, utility compartment
27)371319-05	Window, main door
28)110067-04	Main door assembly, Limited
29)114654	Screen door assembly
30) 114652	Main door jamb, formed

2001 LIMITED TRAILER



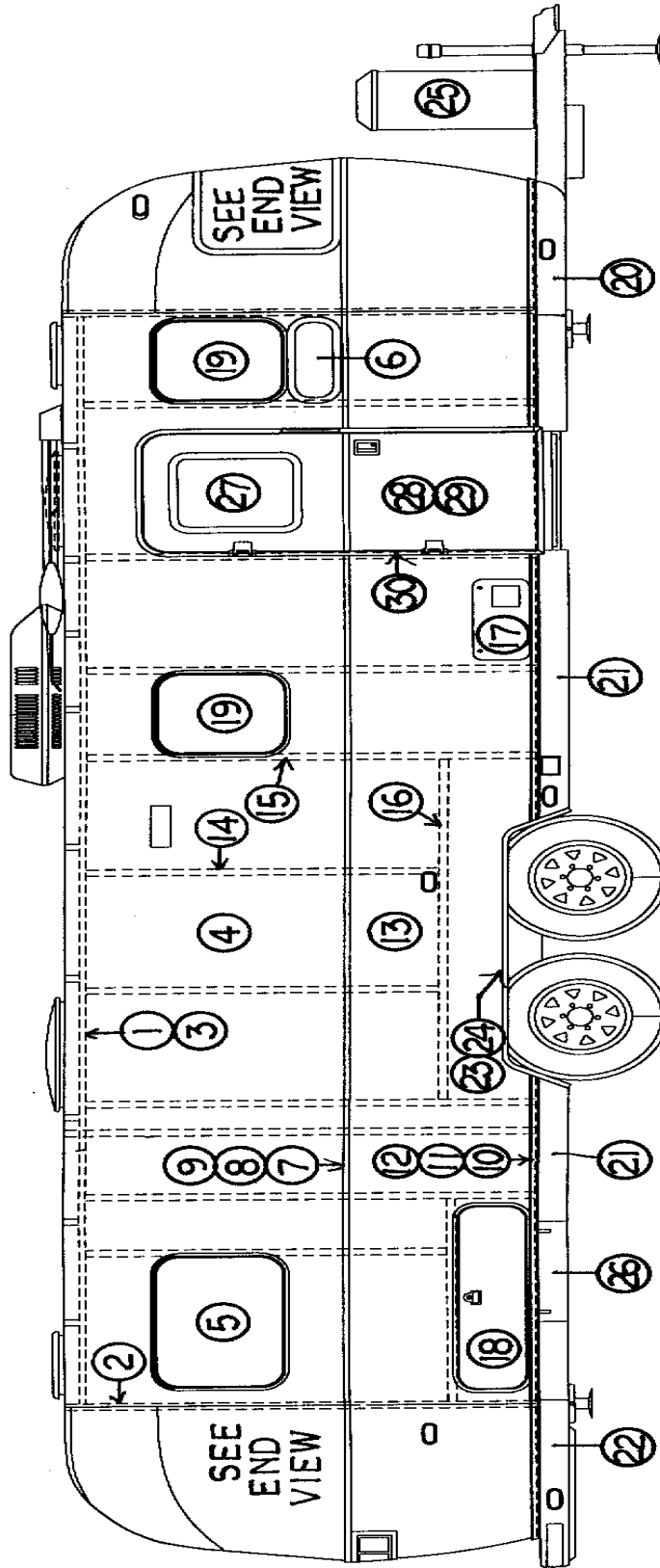
2001 LIMITED TRAILER

BODY-30FT LIMITED, RS

(Hardware such as hinges, locks and latches are located in the **hardware** section of this book)

1) 114290-03	Extrusion, awning/drip rail
2) 114670	Rib, end bow
3) 104707-01	Extrusion," I" beam
4)114880-262	Aluminum sheet,upper,.040 x 51 x 262"
5)371324-02	Window,30in. opening
6)371270	Window,30in.,stack,stationary
7) 114328	Extrusion, belt line
8)201912	Molding, chrome, belt line
9)100034	"Z" bar,48"
10) 114460	Extrusion, rub rail
11) 201763-01	Insert, rub rail, chrome, 1"
12)100986	Floor channel
13)114879-262	Aluminum sheet,lower,.040 x 33 x 262"
14) 114387-01	Bow, Z rib, RH
15) 114387-02	Bow, Z rib, LH
16)100986	Wheel well stiffener(floor channel)
17) 104439	Louvered panel, refrigerator access door
18) 690209	Cover, brushed aluminum, Atwood
19) 922288-01	Door, side access, long, twin only
20) 200542	Banana wrap, RS front
21)101131-01	Underbelly wrap,.024 x 22.5,pewter
22) 201974-01	Bumper, rear corner, RS
23) 114003-02	Wheel well trim, inner, tandem axle
24) 114004-02	Wheel well trim, outer, tandem axle
25) 104265	Bottle cover, LP, w/o decals
26) 114496-02	Door, utility compartment
27) 114496-01	Door, power cord compartment
28)100679	Access door w/jamb

2001 LIMITED TRAILER



2001 LIMITED TRAILER

BODY-30FT LIMITED, CS

(Hardware such as hinges, locks and latches are located in the **hardware** section of this book)

1) 114290-03	Extrusion, awning/drip rail
2) 114670	Rib, end bow
3) 104707-01	Extrusion," I" beam
4)114880-262	Aluminum sheet,upper,.040 x 51 x 262"
5)371324-02	Window,30in. opening
6)371269	Window,18in.,stack,stationary
7) 114328	Extrusion, belt line
8)201912	Molding, chrome, belt line
9)100034	"Z" bar,48"
10) 114460	Extrusion, rub rail
11) 201763-01	Insert, rub rail, chrome, 1"
12)100986	Floor channel
13)114879-262	Aluminum sheet,lower,.040 x 33 x 262"
14) 114387-01	Bow, Z rib, RH
15) 114387-02	Bow, Z rib, LH
16)100986	Wheel well stiffener(floor channel)
17)690274-06	Cover Hydroflame furnace
18) 922288-01	Door, side access, long, twin only
19) 371323	Window, 18in. opening
20)200543	Banana wrap,CS front
21)101131-01	Underbelly wrap,.024 x 22.5,pewter
22) 201974-02	Bumper, rear corner, CS
23) 114003-02	Wheel well trim, inner, tandem
24) 114004-02	Wheel well trim, outer, tandem
25)104265	Bottle cover,LP,w/o decal
26) 114496-02	Door, utility compartment
27) 371319-05	Window, main door
28) 110067-04	Main door assembly, Limited
29)114654	Screen door assembly
30) 114652	Main door jamb, formed

2001 LIMITED TRAILER

BODY-INTERIOR

(Hardware such as hinges, locks and latches are located in the **hardware** section of this book)

114445	Aluminum inside skin	.032 x 34" x coil
114853-01	Aluminum inside skin	.032 x 57" x coil
702481	Wall liner, Geometric Pearl *Adhesive, Fastbond 2000	
702482-03	Headliner, Spectra Opal, textured	
201728-01	Extrusion, plastic, ceiling trim retainer	
201728-03	Extrusion, plastic, ceiling trim	
203138-01	Extrusion, plastic, "U" panel edging, white	
203138-02	Extrusion, plastic, interior wall, brown	
101077	Extrusion, inside main door trim	
200968-01	Trim ring, plastic 30 x 30 stationary window	
201675-01	Trim ring,inside,30" stack window	
371319-03	Trim ring, window, main door	
201578-01	End cap trim ring, panoramic window (goes next to end bow)	
201579-01	Trim, panoramic window, bottom, RS	
201580-01	Trim panoramic window, bottom, CS	
201581-03	Trim, panoramic window, upper, RS	
201581-04	Trim, panoramic window upper, CS	
203225	"U" tri, flexible, panoramic window/access door jamb	
200514	Wheel well cover, interior, tandem (splice two for tri-axle)	
381737	Handle, grab, white molded	

*For reference only: Please purchase adhesives locally.

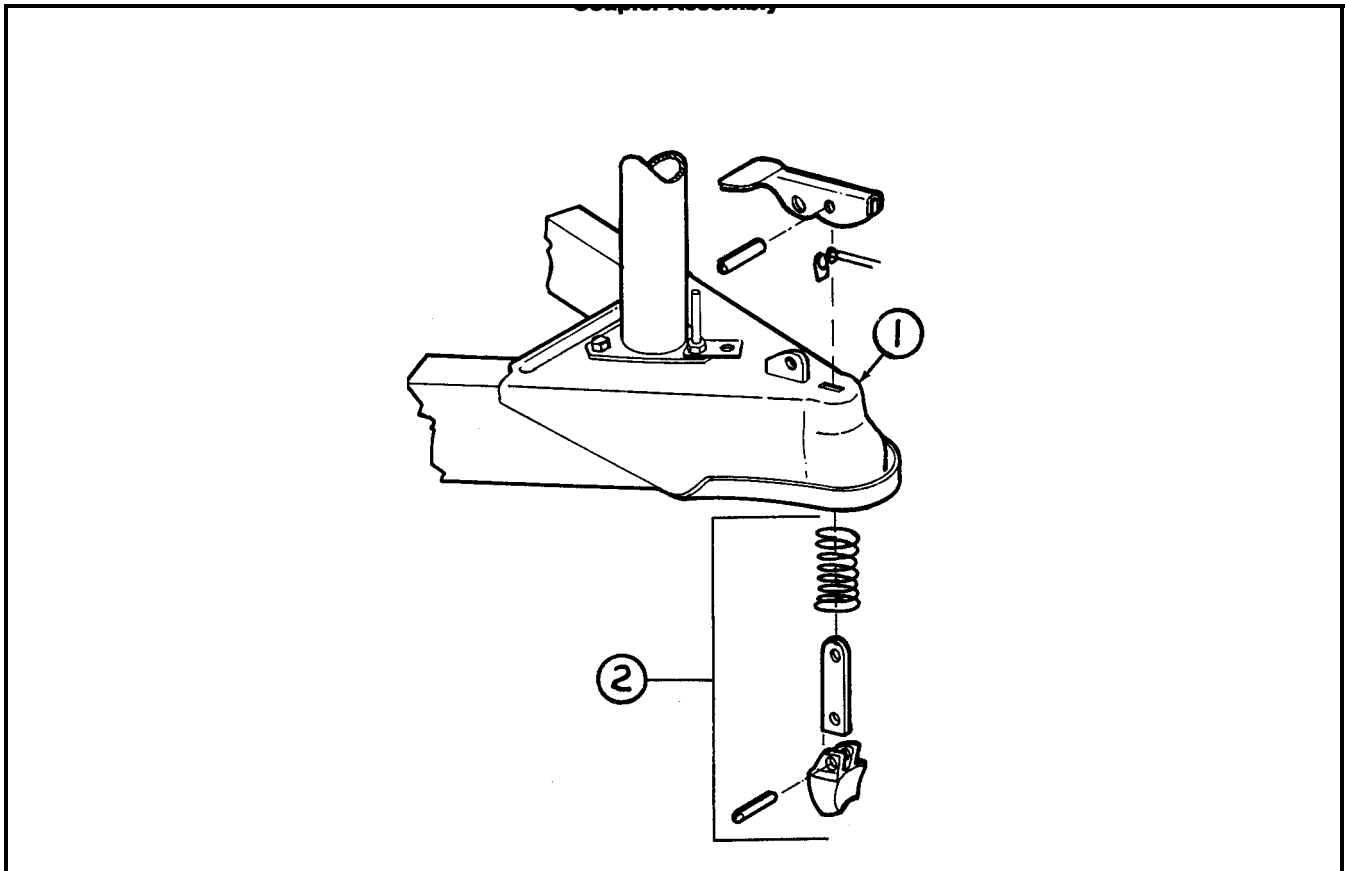
2001 LIMITED TRAILER

CHASSIS

A-FRAME

- 452917 Cover, A-frame, S.S.,LTD.
- 915249 A-frame complete for lay down LP bottles
- 915256 A-frame complete for stand up LP bottles

- 400042 Coupler

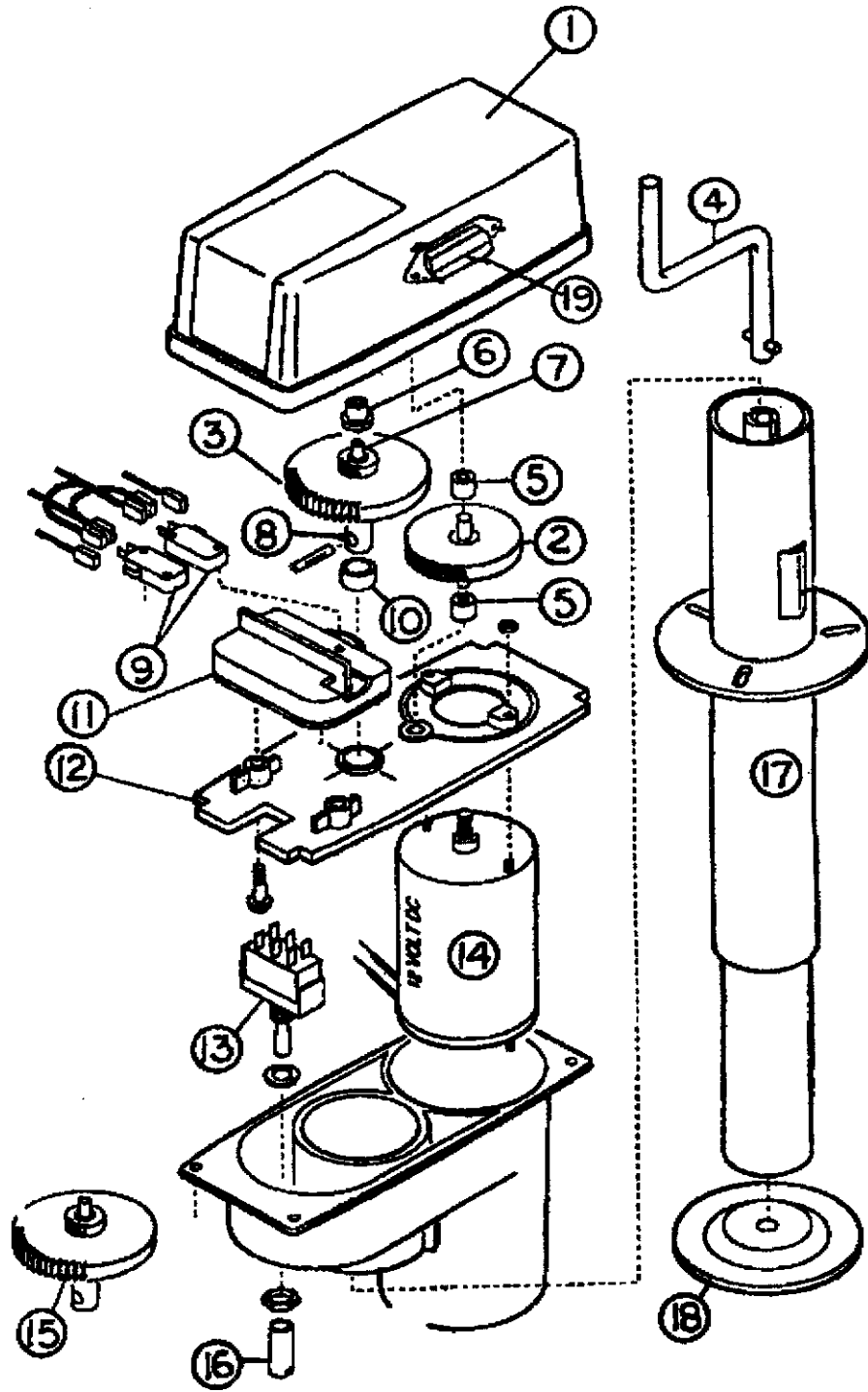


- 1)680343 Coupler assembly,2 5/16"
- 2)680345 Repair kit,2 5/16" coupler

- 0300027 Break away switch, Bargman
- 400407 Bracket, breakaway switch

(continued)

2001 LIMITED TRAILER



2001 LIMITED TRAILER

CHASSIS

POWER JACK

511544	Power jack w/light
012251	Power head less post
400945	5/16 clevis, safety hook
601544	E-Z Hose Carrier
1) 012198	Cover, Super Jack
2) 010051	Gear, fiber, Super Jack
3) 015551	Drive gear, Super Jack
4) 016199	Crank handle, manual, Super Jack
5) 080501	Bushing, bronze, Super Jack
6) 010055	Bushing, flange, Super Jack
7) 015552	Gear, pot/reed, Super Jack
8) 015553	Shaft, Super Jack
9) 081703	Micro switch, Super Jack
10) 080520	Bushing/bronze, 7/16, Super Jack
11) 012252	Limit switch assembly, Super Jack
12) 012200	Center plate, Super Jack
13) 081704	Switch, toggle, Super Jack
14) 016263	Motor, 12V, Super Jack
15) 011675	Drive gear assembly, Super Jack
16) 010069	Switch cover, Super Jack
17) 011631	Jack post, Super Jack
18) 410598	Foot pad #12231
19) 026503	Light, Jack

2001 LIMITED TRAILER

CHASSIS

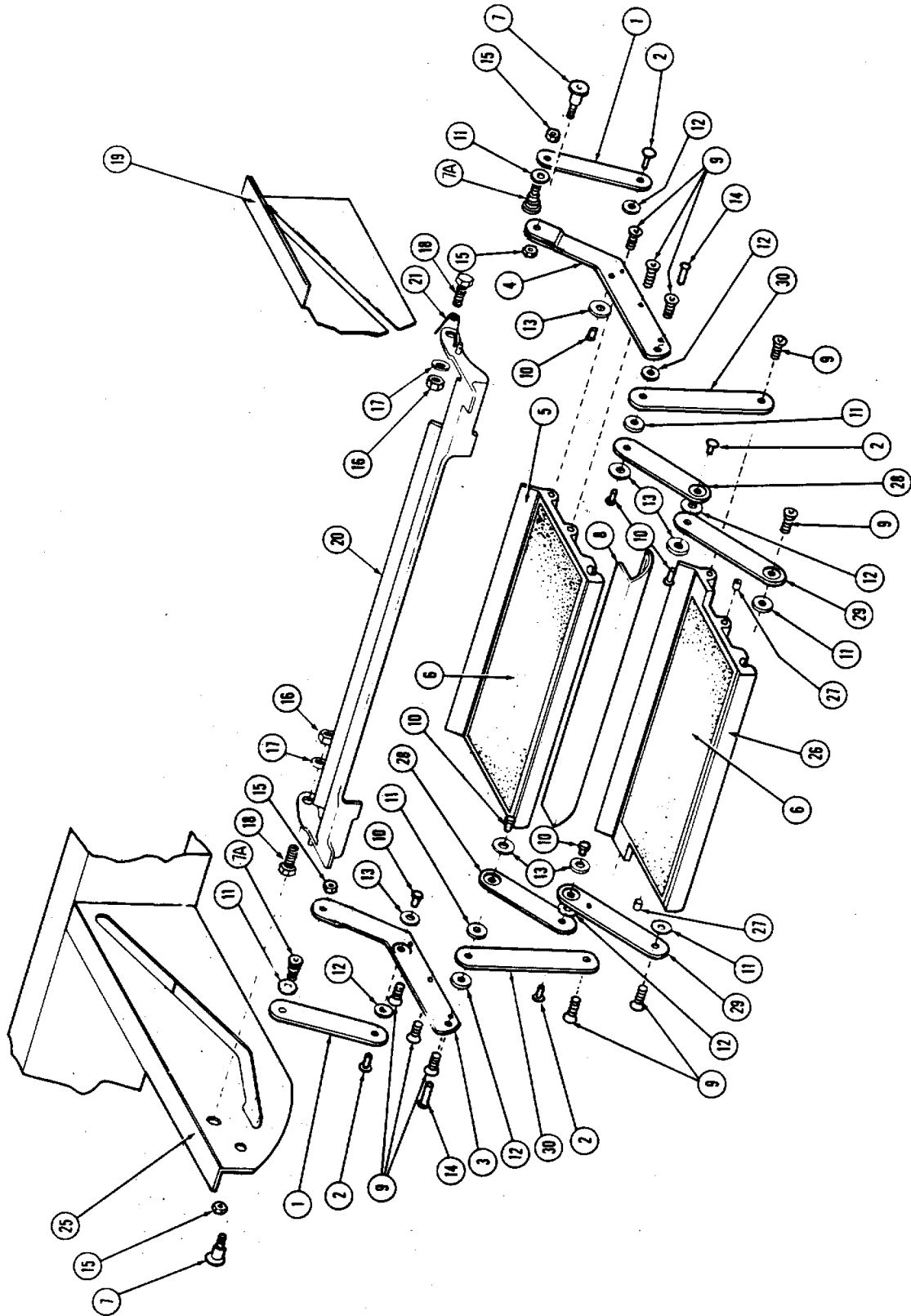
LP BOTTLE RACK, STAND-UP

410504	LP bottle ring, lower
410566	LP bottle support plate w/rod holder
410641	LP regulate mounting bracket
410410	Hold down rod, threaded, for 40lbs bottle
100949	Bracket, bottle hold, cast aluminum
410238	"T" handle, threaded, cast aluminum
450414	"A" frame tire carrier, used w/stand up bottles
452917	Cover, "A" frame, S.S. LTD.
913619	Tool box assy, A frame
410551	Lid, toolbox assy
381430	Lock, twist straight cam

2001 LIMITED TRAILER

NOTES

2001 LIMITED TRAILER



2001 LIMITED TRAILER

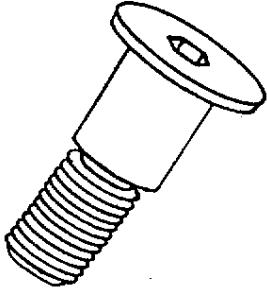
CHASSIS

STEP

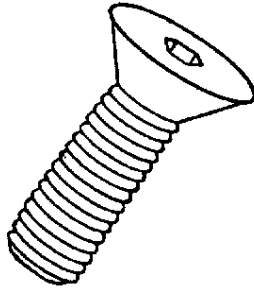
3440006	Double step assembly
1) 680213	Arm, upper support
2) 680214	*Pin, hinge
3) 680215	Step bracket, left
4) 680216	Step bracket, right
5) 680217	Extrusion, step 20.5"
6)380069	Safety tread
7) 001152	*Bolt, shoulder
7a)001145	*Bolt,shoulder,3/8 thread
8)680220	Panel
9) 680221	*Screw, flat head
10) 680222	*Bolt, socket head
11) 680223	*Washer, bronze
12) 680224	*Washer, wave
13) 680225	*Washer, aluminum
14) 680226	*Pin, pivot
15) 350005	Nut, hex
16) 350147-25	Nut, Nylock
17) 300005	Washer, flat
18) 345016	Screw, machine
19) 400454	Outrigger, RH
20) 100298	Casting, step release
21) 450433	spring, torsion
25) 400455	Outrigger, LH
26) 410200	Extrusion, step, 20.0"
27)410201	*Bullet catch
28) 400004	Hinge arm, upper
29) 400003	Hinge arm, lower
30) 400005	Arm, lower support

*larger illustration on next page

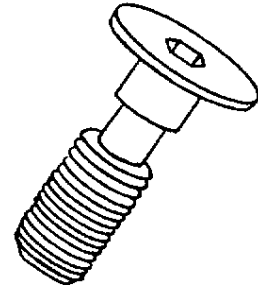
2001 LIMITED TRAILER



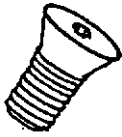
001152
1/2 shoulder
W/3/8-16 thread
shoulder bolt



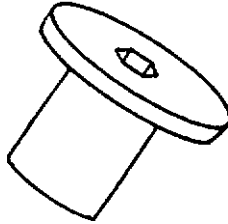
680221
3/8-16 x 1
Flat head Allen
socket screw



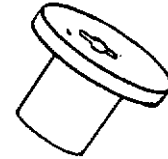
001145
3/8-16
shoulder bolt



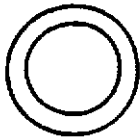
680222
Flat head Allen
socket screw



680226
pivot pin



680214
hinge pin



680223
brass washer



680224
wave washer



680225
aluminum washer

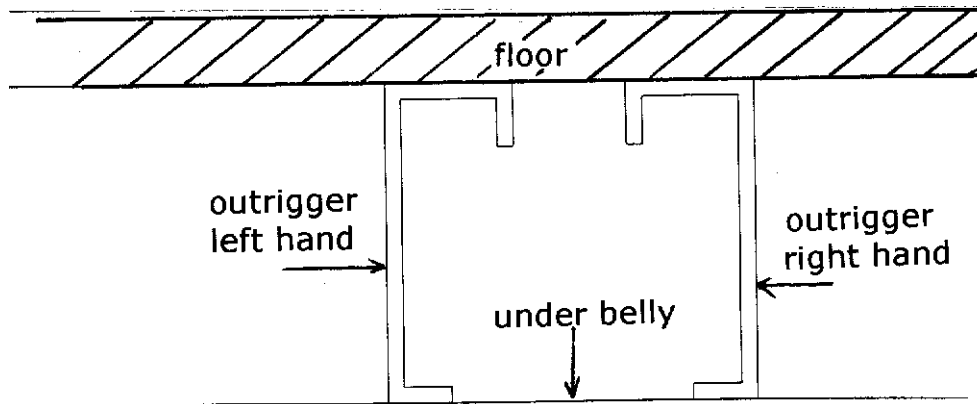


410201 bullet catch

2001 LIMITED TRAILER

CHASSIS OUTRIGGERS

410524	Step outrigger assembly, forward
410523	Step outrigger assembly, aft
410497	Outrigger, pierced, RH
410498	Outrigger, pierced, LH
410500	Outrigger, standard, LH
410499	Outrigger, standard, RH
410501	Outrigger, solid, RH, notched
410502	Outrigger, solid, LH, notched
410706	Outrigger, power cord compartment, RH
410758	Outrigger, power cord compartment, LH



CHASSIS COVERING

114679	Aluminum under belly .019-x 65.75-x coil
101131	Aluminum under belly .024-x 22.50-x coil
101131-01	Aluminum under belly .024-x 22.5-x coil, Pewter (covers from under belly to floor line)
200543	Banana wrap, CS front
200542	Banana wrap, RS front
203142	Bumper, rear center
201974-01	Bumper, rear corner, RS
201974-02	Bumper, rear corner, CS

(Note: the rear roll out tray makes up part of the center section of the bumper)

2001 LIMITED TRAILER

CHASSIS

STABILIZING JACKS

510628	Stabilizing jacks, electric, A&E systems
510731	Control, leveler, A&E

BELOW FLOOR STORAGE

962828-01	Roll out tray assembly, rear
453144	Roll out tray
381556	Overhead door track, 2"
453159	Enclosure assembly, rear roll out tray
453156	"U" bar, roller support
381555	Ten ball roller w/stem
310028	Lynch pin, 1/4"
201909	Molding, black bumper trim
915145-01	Utility compartment assembly
914022	Power cord storage plate
601544	E-Z hose carrier, 46"
961251	Box, flag storage compartment

2001 LIMITED TRAILER

CHASSIS

RUNNING GEAR

7320036H	Axle, 3200#, 34ft. Limited
7400068H	Axle, 4000#, 30 & 31ft. Limited
7350475H	Axle, 3500#, 34 Limited slide out
0220003	Shock absorber
410841	Tire and wheel assembly, Limited
400935	Wheel, aluminum, 7 x 15"
400936	Cover, center hub
400923	Lug nut, acorn type
410009	Valve stem
410842	Tire, Goodyear, ST 225-75R-15, load range D
200844	Wheel well, tandem

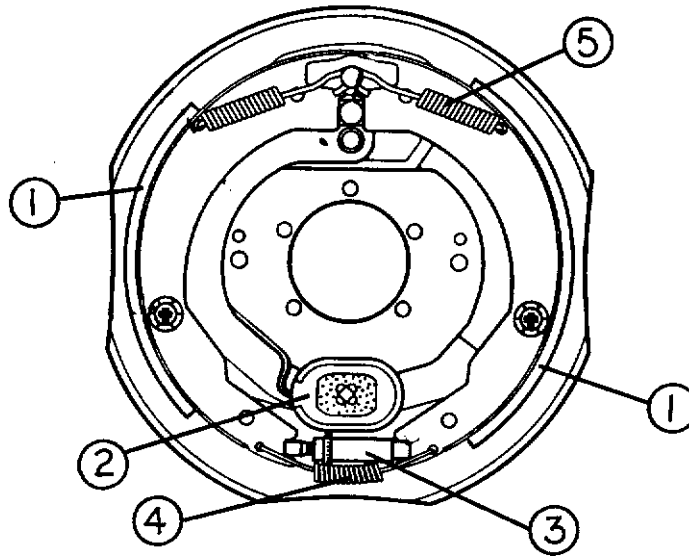
(Tri-axle wheel wells are made from two tandems)

2001 LIMITED TRAILER

CHASSIS

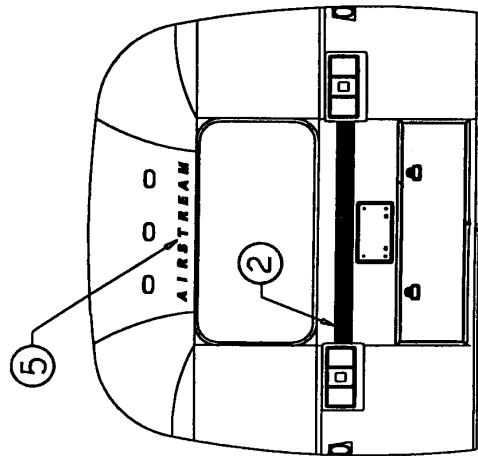
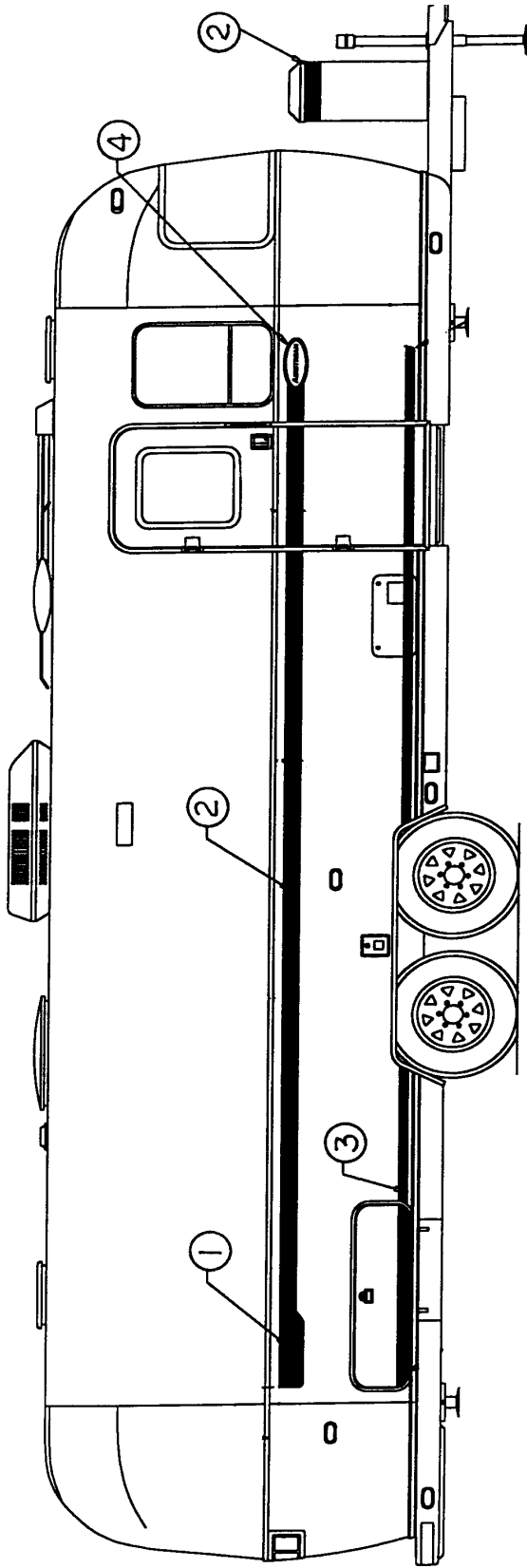
12" BRAKES

3160121	Brake drum, 12", 6 lug
450659	Inner bearing, #25580
680364	Inner race, #25520
450658	Outer bearing, #LM67048
680365	Outer race, #LM67010
680370-100	Grease seal
3160347	Brake assembly, RH, 12" Dexter
3160348	Brake assembly, LH, 12" Dexter



1) 3160348-62	Shoe and lining kit (includes hold down spring and pin)
2) 3160348-65	Magnet kit
3) 3160348-63	Adjuster assembly
4) 3160348-64	Adjusting screw spring
5) 3160348-61	Retractor spring

2001 LIMITED TRAILER



2001 LIMITED TRAILER

DECALS/EXTERIOR TRIM

DECALS

- 1) 386048-02 Decal, Limited, CS rear
- 1a) 386048-01 Decal, Limited, RS rear
- 2) 386048-07 Decal, Limited, main stripe
- 3) 386048-05 Decal, Limited, lower side stripe
- 4) 386043-01 Medallion, Airstream, Burgundy
- 5) 386051 Decal, "AIRSTREAM" 32", front & rear

Not shown:

- 386052 Decal, "LIMITED" CS & RS
- 385582-01 Decal, AIRSTREAM for roof A/C

EXTERIOR TRIM

- 114328 Extrusion, belt line molding
- 201912 Molding, belt line insert, chrome
- 114417 Casting, belt line close out

- 114460 Extrusion, rub rail
- 201763-01 Molding, rub rail insert, chrome
- 114466-01 Casting, close out, rub rail, angled, RH
- 114466-02 Casting, close out, rub rail, angled, LH
- 114465-01 Casting, close out, rub rail, RH
- 114465-02 Casting, close out, rub rail, LH
- 381753-02 End clip, rub rail, gray

2001 LIMITED TRAILER

685257	inner wheel well trim, tri-axle
685258	outer wheel well trim, tri-axle
685936	inner wheel well trim, tandem axle
685937	outer wheel well trim, tandem axle
386067-01	Medallion, 4 3/8", burgundy, 70th anniversary
386068	Medallion, 3", screen door

2001 LIMITED TRAILER

DOORS/WINDOWS/AWNING

(Hardware such as hinges, locks and latches are located in the **hardware** section of this book.)

DOORS

110067-05	Main door assembly
114652	Jamb, main door, preformed
114653	Frame, main door, preformed
114880-307	Skin, exterior, upper main door
114879-307	Skin, exterior, lower main door
114475	Skin, inner, vinyl clad
114363	Drip sap, main door
385232	Seal, main door
380704	Seal, upper main door, (above 365032)
114654	Screen door assembly
114561	Panel, slider, screen door
203000-01	Close out, plastic, screen door (revised for deadbolt.)
203257	Close-out, screen door w/deadbolt
32226W	Guard, screen door
380079	Screen, gray
200518	Spline, gray, screen insert
365013	Gasket, screen door, foam tape
922243	Door, refrigerator access
104417	Jamb, refrigerator access door
104439	Louvered panel, refrigerator access door
203225	Trim, flexible, white, inner doorjamb
100679-01	Side access door assembly
365035	Seal, site access door
114648	Kick panel, screen door
921159-01	Trunk door assembly, rear, twin only
114675	Jamb, rear trunk door
365035	Seal access, door

2001 LIMITED TRAILER

DOORS/WINDOWS/AWNING

(Hardware such as hinges, locks and latches are located in the **hardware** section of this book.)

DOORS

922288-01	Door, side access, long, twin only
104833	Jamb, long side access door, twin only
114467-01	Door panel, outer, battery box door
114468	Door panel, inner, battery box door
114464	Casting, battery box door jamb
380238	Support cable, battery box door
200885	Plastic battery tray
381397	Key cylinder w/ cam, 501 key
114496-02	Door, utility compartment
114496-01	Door, power cord compartment
690209	Cover, brushed aluminum, Atwood water heater
670274-06	Cover, Hydroflame furnace
601194	Water fill door w/pocket & lock
114219	Door, flag storage compartment

2001 LIMITED TRAILER

DOORS/WINDOWS/AWNINGS

(Hardware such as hinges, locks and latches are located in the **hardware** section of this book.)

WINDOWS

371346-02	Window, flat, front center
372088	Window, panoramic, front RS
372089	Window, panoramic, front, CS
371348-02	Window, flat, rear w/red handles
371285-01	Window, curved 30 x 30 fixed
371324-02	Window, curved 30" opening
371270-01	Window, curved, 30" stacked
371323-01	Window, curved 18" opening
371269-01	Window, curved 18" stacked
371319-05	Window, main door
371319-03	Trim ring, inside, main door window

WINDOW SCREENS

371349-01	Screen, rear escape
371347-01	Screen, front window
372175-02	Screen, 30" opening window
372174-01	Screen, 18" opening window
372175-03	Screen, 30", alternate egress
371174-02	Screen, 18" non-opening
372215	Screen, 30" tall, slide out
380230-03	Knob, window arm, Silver
380230-04	Knob, window arm, Red
380088	Handle, latch, Red

2001 LIMITED TRAILER

DOORS/WINDOWS/AWNINGS

(Hardware such as hinges, locks and latches are located in the **hardware** section of this book.)

AWNINGS

702663-10	Awning, patio, 21' 7" red, all Limited
381532-01	Hardware, patio, satin
702662-05	Center support CS-05
702663-07	Awning, CS rear window, 3' red
702663-08	Awning, rear window, red, 52 5/8"
702663-03	Awning, RS window, 14'10" red, 34ft.
702663-05	Awning, RS windows, 13'4" red, 30&31ft.
703052-01	Cover, awning 9'4" Red, 34 S/O
385577	Wear tape, clear, 3.5" wide
110102	Rock guard, center only
381021	Latch, draw type, flexible
685275-101	Rock guard, CS front
685275-102	Rock guard, RS front
203242	Kit, body armor, 34 S/O

2001 LIMITED TRAILER
DRAPES/SHADES/VALANCES

DRAPES

998056-01 Drape, rear, 4-16 pleat, 34, 31D, 30D
998056-02 Drape, back trailer, 34 S/O
998134-01 Drape, rear bedroom, side, 2-9 pleats, 34,
31D & 30D
998134-04 Drape, 30"bedroom, 2-9 pleat, 31T & 30T
998057 Drape, bedroom, 2-7 pleat, 31T & 30T
998053-01 Drape, dinette, 2-8 pleat&1-5 pleat, 34', 31' & 30'
998053 Drape, galley, 2-2 pleat, 34', 31' & 30'
998050-01 Drape, front, 4-16 pleat, 34', 31' & 30'
998050-02 Drape, front, 4-16 pleat, 34 S/O
998135 Drape, lounge, CS, 2-6 pleat, 34', 31' & 30'
998134-02 Drape, lounge, RS, 30", 2-9 pleat, 34'
998134-05 Drape, lounge, RS, 30" ,2-9 pleat, 31' & 30'
998135 Drape, lounge, CS, 30", 2-6 pleat, 31' & 30'
988134-02 Drape, lounge, RS, 30", 2-9 pleats, 34 S/O

2001 LIMITED TRAILER

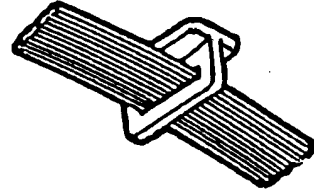
DRAPERY TRACK AND BRACKETS



101220
Bracket, curtain
stand off



101217
Track, curtain



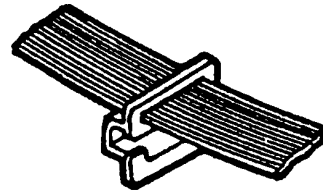
700044
Glides, w/elastic
"T" type



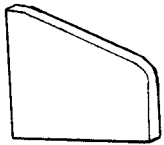
114021
Bracket, curtain
stand off



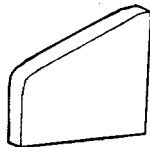
101225
Bracket, curtain
stand off



700045
Glides, w/elastic
"G" type



200785
End, curtain track, LH



200784
End, curtain track, RH



101005
Bracket, curtain standoff

2001 LIMITED TRAILER

DRAPES/SHADES/VALANCES

964107-01	Valance, rear bedroom, 34,31,and 30ft.D
964106-02	Valance, bedroom, 52", CS, 34,31 and 30ft.D
964106-03	Valance, bedroom, 52", RS, 34,31 and 30ft.D, 34 S/O
964106-06	Valance, bedroom, 38.5"CS, 34ft.twins, 34 S/O
964106-07	Valance, bedroom, 38.5"RS, 34ft.twins, 34 S/O
964106-04	Valance, bedroom, 38", CS, 30&31ft.twins
964106-05	Valance, bedroom, 38", RS, 30&31ft.twins
964105-01	Valance, galley, 24" 30&31ft., twin & double
964105-03	Valance, galley, 37" 34ft., twin & double
964105-06	Valance, Lounge, 54", 34' S/O
964108-01	Valance, dinette 30&34FT. twin double, 34 S/O
964104-03	Valance, lounge, 58" 30ft. twin double
964104-05	Valance, lounge, 91" 31ft. twin double
964104-01	Valance, lounge, 42" 30 & 31ft. twin& double
964104-02	Valance, lounge, 56" 34ft., 34 S/O
964104-06	Valance, lounge, 100" 34ft.

2001 LIMITED TRAILER
DRAPES/SHADES/VALANCES

Shades

702968-01	Shade, pleated, day/night	17.125 x 22.5, Ascot
702968-08	Shade, pleated, day/night	28.87 x 33.0 Ascot
702968-16	Shade, pleated, day/night	47.05 x 25.0, Ascot
702968-02	Shade, pleated, day/night	17.125 x 33.0, Ascot
702968-10	Shade, pleated, day/night	31.0 x 33.0, ASCOT
702968-07	Shade, pleated, day/night	28.875 X 22.5, Ascot
702969-16	Shade, pleated, night	47.5 x 25.0, Ascot
702969-07	Shade, pleated night	28.87 x 22.5, Ascot

2001 LIMITED TRAILER

ELECTRICAL

110 VOLT

510634	Power cord, 120 volt, 36ft.
510723	Breaker Box, Square D
511336	Breaker box, Square D, 30amp
510662	Breaker, 20 amp, double, Square D 2020
510666	Breaker, 15/20 amps double
510663	Breaker, 30amp, Square D, 0130
510661	Breaker, 20 amps. Square D GFI
511020-01	Breaker, 20 amps
510724	Breaker, double pole, 50 amps
500563-01	Receptacle, 15 amp, T&B type
500903	Duplex receptacle, ivory
500169	Housing, weatherproof receptacle
510122	Cover plate, weatherproof receptacle
510676-01	Outlet, exterior, gray
500903	Receptacle, duplex
510514	Switch, priority, microwave to water heater (CSA)
510606	Receptacle box, priority switch
500385	Switch cover, ivory
511426	Converter, electronic, 55 amps
511023	Tester, circuit analyzer (loose item)

2001 LIMITED TRAILER

ELECTRICAL

12 VOLT

511132	Battery, deep cycle, lead acid
500886	7-Way cable w/plug
511411	Junction box, 7-way cable
0300027	Break away switch, Bargman
511426	Converter, electronic, 55 amps
510626	Switch, master disconnect
510627	Face plate, disconnect switch
510655	Breaker panel, 12 volt
510781	Detector, smoke
511309	Detector, LPG
511152-103	Monitor panel, deluxe
511018	Monitor panel, tank harness
510807	Outlet, 12 volt
511121	Mounting plate, 12 volt receptacle
500842	Light, fluorescent, 16 Watt, 12 x 5.5"
680085	Bulb, fluorescent, #F15T8-CW
500960-01	Light, fluorescent, recessed, 14.75"
680084	Bulb, fluorescent, #F8T5-CW
511248	Light, incandescent, single
511249	Light, incandescent, double
50085-02	Bulb, incandescent, #1141
511515	Light, chandelier, over dinette
511495-100	Bulb, wedge base, # 921
511474-02	Dimmer switch, 12 volt
511534	Dual, coax, cable plate, white

2001 LIMITED TRAILER

ELECTRICAL 12 VOLT

511298	Wall lamp, 12 volt-over rear bed
510689	Bulb, incandescent, #1076
511298-02	Shade, wall lamp, round
511298-01	Shade, wall lamp, rectangular
108876	Light, fluorescent, dual bulb (square, over vent)
500841	Dual fluorescent bulb w/ballast
201538	Lens, ceiling, square, front ceiling light
511297	Light, reading, halogen w/switch
511137-100	Bulb, halogen wedge base, reading light
500956	Light, wardrobe, w/switch
681924	Bulb, wardrobe light #581
511410	Light, shower, incandescent
50085-02	Bulb, incandescent, #1141
511023	Tester, circuit
511375	Jack, modular, telephone

2001 LIMITED TRAILER

ELECTRICAL 12-Volt Switches

510868-03	Switch panel, 4-gang, white
381541-05	Switch, bath ceiling vent
511447	Cover, double switch, brown
511327	Switch body w/rocker, 1 gang, and white
511328	Switch cover, 1 gang
511567-01	Switch body, w/switches
511566	Cover, switch, 2-gang
500435	Switch, DPDT, Hi-Lo
500432	Switch, SPST, flood light
500431	Switch, SPST, step light
510614-01	Jack, TV w/12 volt outlet
104619	Mounting plate, exterior telephone/TV jack
511375	Jack, modular telephone
511531	Switch, slide out travel lock
510626	Switch, master disconnect
510627	Face plate, master disconnect switch
511474	Switch, dimmer 12v, black
511531	Switch, travel lock, S/O trailer

2001 LIMITED TRAILER

ELECTRICAL

EXTERIOR LIGHT AND REFLECTORS

500564	Step light, #8142 w/hail shade
510732	Utility light, by door and on front
114346-01	Bezel, tail light casting, RS
114346-02	Bezel, tail light casting, CS
201929-01	Close out, tail light, RS
201929-02	Close out, tail light, CS
511003-02	Light, red stop, tail and turn
511003-03	Light, red w/clear center (back-up)
510111	Clearance light, red, Signal Stat
510112	Clearance light, amber, Signal Stat
511294	Light, license plate
500095	Reflector, red, rectangular
500096	Reflector, amber, rectangular
500092	Exterior, floodlight

2001 LIMITED TRAILER

ENTERTAINMENT

511383-01	Radio, AM/FM/Cassette w/CD control, Sony XR-6120
511048	Speaker set, Coustic-HS-402
690419	TV-Sony, 20", stereo
510788-01	Antenna, TV, Winegard
510788-03	Amplifier, antenna, Winegard
510788-04	Hardware, interior, Winegard
510788-107	Gear, elevating, plastic, Winegard
510788-118	Handle, directional, Winegard
510788-125	Handle, directional kit, Winegard
510616	Connector,"F", coax
510623	Connector, male-to-male, coax
510610	Antenna, radio, side mount
510614	Jack, TV, 12-volt, white
114975	Bracket, TV support, 34' S/O trailer
511310	Video Control Center
114988	Bracket, mounting, Video Control Center

MOBILE SOUND SYSTEM

511385-01	Switch, electric source selector
511385-04	Speaker, 6"x9"
511385-05	Grille, speaker
511385-02	Amplifier module
511385-10	3" flush mount
511385-11	3" flush mount white speaker grille
511385-13	Wire harness, universal

TABLE OF CONTENTS

*FASTENERS



325043
Rivet, buck type
Dia. 1/8"
Length 1/4"
(Hard)



325000-01
Rivet, buck type
dia. 1/8"
length 1/4"
anodized clear



325000-03
Rivet, buck type
dia. 1/8"
length 1/4"
anodized white



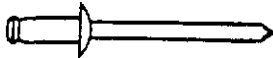
325001-01
Rivet, buck type
Dia. 1/8"
Length 5/16"
Anodized clear



325002-01
Rivet, buck type
dia. 1/8"
length 3/8"
anodized clear



325004-01
Rivet, buck type
dia. 1/8"
length 1/2"
anodized clear



330127-03
Dia. 1/8"
Grip range .063-.125
Aluminum body
Aluminum mandrel

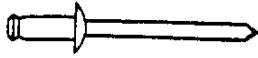


300101
1/8" I.D.
washer, aluminum

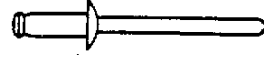
*Common bolts and screws readily available at local hardware outlets have not been listed.

TABLE OF CONTENTS

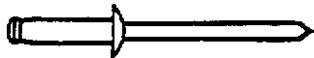
*FASTENERS



330126-02
Rivet, pop
Dia. 1/8 "
Grip range .126-.187
Stainless steel body
Stainless steel mandrel



330126-03
rivet, pop
dia. 1/8 "
grip range .126-.250
stainless steel body
stainless steel mandrel



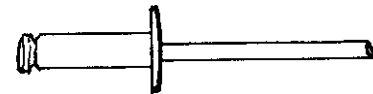
330127-050
Rivet, pop
Dia. 1/8"
Grip range .251-.312
Aluminum body
Aluminum mandrel



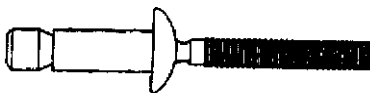
330128-05
rivet, pop
dia. 1/8"
grip range .251-.312
aluminum body, white
aluminum mandrel



330127-080
Rivet, pop
Dia. 1/8"
Grip range .325-.565
Aluminum body
Aluminum mandrel



330038
rivet, pop
dia. .150 (#20 bit)
grip range .126-.250
aluminum body
aluminum mandrel
(Used-screen door hinge)



325103
Dia. 1/4"
Grip range .080-.325
SS body steel mandrel

*Common bolts and screws not listed.

TABLE OF CONTENTS

FLOOR COVERING

702793-02	Carpet, Regal/Nautical Blue
701538	Carpet, Velour-compartment liner
702979	Flooring, vinyl, roll out tray
700173	Pad, carpet, 3/8" thick (slide out model only)
700173-01	Pad, carpet, 1/2" thick
114724	Trim, carpet, edging, Z-bar, aluminum
801115	Flooring, white oak, quartered
800639-02	Adhesive, oak plank
360216	Caulk, brown acrylic latex
703037	Flooring laminate, 15.5 x 15.5, Capisto Sand
801291	Trim, laminate floor, Capisto Sand
365252	Adhesive, laminate floor
702549	Matt, entrance, w/Airstream logo

TABLE OF CONTENTS

FURNITURE

CABINET DOORS, RAISED PANEL

		Width x height in inches
800597-564	Raised panel door	7.75 x 17.50
800597-574	Raised panel door	9.00 x 16.25
800597-014	Raised panel door	10.50 x 22.00
800597-124	Raised panel door	10.50 x 26.25
800597-414	Raised panel door	10.50 x 32.00
800597-094	Raised panel door	11.00 x 29.75
800597-274	Raised panel door	11.50 x 25.00
800597-504	Raised panel door	12.00 x 29.50
800597-074	Raised panel door	12.25 x 21.00
800597-104	Raised panel door	12.25 x 34.00
800597-154	Raised panel door	13.00 x 25.75
800597-024	Raised panel door	14.00 x 20.00
800597-054	Raised panel door	14.75 x 29.75
800597-494	Raised panel door	15.50 x 13.00
800597-514	Raised panel door	15.75 x 23.00
800597-084	Raised panel door	16.00 x 29.50

TABLE OF CONTENTS
FURNITURE
CABINET DOOR FRAMES FOR MIRRORS

		Width	height
800557-234	Door frame	10.50	x 32.50
800557-304	Door frame	11.75	x 42.00
800557-174	Door frame	12.25	x 34.00
800557-034	Door frame	14.50	x 25.00
800557-044	Door frame	15.00	x 14.50
800557-104	Door frame	22.00	x 60.00

MIRRORS

		Width	height
372206-01	Mirror, bronze w/grooves	7.62	x 29.62
372206-07	Mirror, bronze w/grooves	11.62	x 22.12
372206-08	Mirror, bronze w/grooves	12.12	x 11.62
372206-01	Mirror, bronze w/grooves	62.00	x 29.62
371262-44	Mirror, safety glass	6.50	x 12.75
371262-60	Mirror, safety glass	8.88	x 39.12
371262-13	Mirror, safety glass	9.38	x 31.12
371262-08	Mirror, safety glass	11.38	x 28.12
371262-43	Mirror, safety glass	11.50	x 12.75
371262-04	Mirror, safety glass	19.12	x 28.12
371262-10	Mirror, safety glass	16.12	x 28.12
372210-11	Mirror, beveled edges	7.75	x 19.50
372210-19	Mirror, beveled edges	8.00	x 41.50
372210-18	Mirror, beveled edges	9.00	x 28.50
372210-10	Mirror, beveled edges	11.00	x 29.00
372203-17	Mirror, safety w/polished edges	14.0	x 33.13
372203-04	Mirror, safety	14.0	x 36.00
372213	Trim, mirror, bright chrome		
365239	<i>Foam pad, on-skid, 1/16 x 1/4 x 1"</i> <i>(Used between mirror and door frame)</i>		

TABLE OF CONTENTS

FURNITURE

MISCELLANEOUS DOORS

986265	Sliding bath door assembly, 34 LTD	
963179-02	Slider door assembly, 29 x 72", 34 & 31 LTD	
381100	Guide, sliding door	
961413-10	Door, slider, fwd bath, 31LTD	
962066	Door, slider, aft, 30LTD	
961413-03	Door, slider, 30LTD	
702306-02	Shower door gold, 26" opening	
702306-107	Drip cap, shower door	
702681-01	Door, foldette, 36 x 73", beige	
800881-05	Door, louvered, oak, 19 x 12.5	
800881-09	Door, louvered oak, 9 x 20	
964952	Door, dinette drop down	
961957-01	Door, oak (chair storage) 30, 31 & 34LTD	
800474	Door, tambour, appliance garage	
801225-014	Door insert, refrigerator	15.50 x 20.38
801225-034	Door insert, refrigerator	38.38 x 20.38
114496-04	Door, TV/coax compartment	

TABLE OF CONTENTS

FURNITURE

DRAWER FACE

		Width x Length (INCHES)
800559-34	Drawer face	3.00 x 26.00
800599-074	Drawer face	4.50 x 14.00
800599-434	Drawer face	4.50 x 16.00
800599-584	Drawer face	4.75 x 21.50
800599-024	Drawer face	7.00 x 11.75
800599-404	Drawer face	7.00 x 10.25
800599-014	Drawer face	7.00 x 10.50
800599-514	Drawer face	7.00 x 19.00
800599-384	Drawer face	7.00 x 21.50
800599-214	Drawer face	7.00 x 23.00
800599-754	Drawer face	8.00 x 13.50
800599-234	Drawer face	8.00 x 21.50
800599-734	Drawer face	8.50 x 25.00
800599-594	Drawer face	9.75 x 12.00
800599-444	Drawer face	10.25 x 13.50
800599-744	Drawer face	12.00 x 13.50
800599-574	Drawer face	17.25 x 13.00

TABLE OF CONTENTS

FURNITURE

DRAWER BOX

		Height x width x length Inches
964906-09	Drawer box	2.75 x 08.75 x 18.00
964906-10	Drawer box	2.75 x 12.25 x 14.00
964906-05	Drawer box	2.75 x 13.25 x 14.00
964906-02	Drawer box	2.75 x 19.50 x 18.00
964910-02	Drawer box	5.00 x 10.00 x 18.00
964910-14	Drawer box	5.00 x 13.75 x 13.00
964910-12	Drawer box	5.00 x 17.00 x 20.00
964910-13	Drawer box	5.00 x 19.50 x 14.00
964910-03	Drawer box	5.00 x 19.50 x 18.00
964910-01	Drawer box	5.00 x 20.88 x 18.00
964908-01	Drawer box	8.00 x 17.50 x 26.00
963338-01	Drawer box, angled, RS rear wardrobe	
963338-02	Drawer box, angled, CS rear wardrobe	
963749	Drawer box assembly, "W" rear bed	
963759	Drawer box assembly, "J" rear bed	
201016	Drawer, plastic	16 x 22

TABLE OF CONTENTS

FURNITURE

REAR BEDROOM-TWIN

963506-03	Roof locker, rear center
963498	Face frame, rear center roof locker
963329-02	Twin bed assembly, RS, 34 LTD
962227-03	Twin bed assembly, RS, 30 & 31ft.
962227-04	Twin bed assembly, CS, all
998101-01	Bed end, fabric covered, twin
963209-02	Night stand assembly, RS
963351-01	Face frame, nightstand, RS
964452	Top, RS nightstand
969209-02	Night stand assembly, center rear
965210	Face frame, rear center nightstand
965211	Top, rear center nightstand
963671-01	Roof locker, rear, CS or RS
963670	Face frame, rear side roof locker
963827-01	End cap, roof locker, right hand
963827-02	End cap, roof locker, left hand
962355-03	Hanging wardrobe assembly, CS
986180-01	Face frame, hanging wardrobe
962355-04	Hanging wardrobe assembly, RS
986180-01	Face frame, hanging wardrobe
963297-01	Header, slider door, short
964152-014	Chair rail

TABLE OF CONTENTS

FURNITURE

REAR BEDROOM-DOUBLE

963340-03	Wardrobe assemblers rear, 34LTD
963340-05	Wardrobe assemblers rear, 30&31ft.
962207-01	Face framers rear wardrobe
963340-04	Wardrobe assembly, CS rear, 34LTD
963340-06	Wardrobe assembly, CS rear, 30&31ft.
962208-01	Face frame, CS rear wardrobe
963337-03	Rear roof locker, center, 34LTD
963337-04	Rear roof locker, center, 30&31ft.
963336-01	Face frame, rear roof locker
963747	Bed assembly, double
986681	Head board assembly, double bed
381241	TV shelf w/mirror
963296-01	Header, slider door, long
963297-01	Header, slider door, short

TABLE OF CONTENTS

FURNITURE

BATHROOM, 34 LTD FRONT LOUNGE MODEL

(See hardware section for fixtures.

If connected to water, see plumbing)

986265	Sliding bath door
963786-01	Jamb, bath door
963787-01	Jamb, bath door/shower trim
963788-01	Header, bath door
203046-03	Shower stall, angled, two piece
963179-02	Slider door, 29 x 72in., vinyl
963296-01	Header, slider door, long
963297-01	Header, slider door, short
381563-01	Track, formed, foldette door
381581	Strap only, foldette door
965194	Lavatory assembly
965192-004	Face frame, lavatory
965195-004	Top, lavatory, Corian
702053	Decorative border, wallpaper, self-adhesive
963302-03	Medicine cabinet assembly, lower
963266-01	Face frame, lower medicine cabinet
964026-02	Medicine cabinet assembly, upper
964025	Face frame, upper medicine cabinet
964053	Wardrobe assembly, CS
964019	Face frame, wardrobe, forward
964020	Face frame, wardrobe, aft
964947	Lift-up shelf assembly, wardrobe

TABLE OF CONTENTS

Furniture

Bathroom, 34' Slide-out (S/O) Trailer

964224-02	Wardrobe assembly
965219-01	Face frame, wardrobe
965218	Face frame, wardrobe, aft
964302-02	Med. Cabinet assy., lower
964300-01	Med. Cabinet, Face frame
964301-03	Med. Cabinet assy., upper
964299-01	Med. Cabinet assy., Face frame
965214	Lavatory assy.
965212	Lavy Face frame
965215	Lavy top, Corian
965224-02	Wardrobe assy.
965219-01	Wardrobe Face frame
965218	Wardrobe Face frame, aft
800557-3074	Door, frame only, 11.75" x 42.00"

TABLE OF CONTENTS

FURNITURE

BATHROOM, 31 LTD ND

(See hardware section for fixtures.

If connected to water, see plumbing)

964224-02	Wardrobe assembly, CS
964305-01	Face frame, CS wardrobe, forward
964020	Face frame, CS wardrobe, aft
964946	Lift up shelf assembly, wardrobe
961413-10	Slider door, forward
963786-01	Jamb, bath door
963787-01	Jamb, bath door/shower
203046-03	Shower stall, angled, two piece
964297-02	Lavatory cabinet assembly
964296-01	Face frame, lavatory cabinet
964395-01	Top, lavatory cabinet
702053	Decorative border, wallpaper, self-adhesive
964302-02	Medicine cabinet assembly, lower
964300-01	Face frame, lower medicine cabinet
964301-03	Medicine cabinet assembly, upper
964299-01	Face frame, upper medicine cabinet

TABLE OF CONTENTS

FURNITURE

BATHROOM, 30 LTD ND

(See hardware section for fixtures.
If connected to water, see plumbing)

962175-02	Wardrobe assembly, CS
962162-01	Face frame, CS wardrobe, aft
962163-01	Face frame, CS wardrobe, forward
964945	Lift up shelf assembly, wardrobe
203081	Shower stall, angled, two piece
962161-01	Face frame, shower
962066	Slider door, aft
963656	Header, slider door aft
961413-03	Slider door assy.
963657	Header, slider door, forward
961921-03	Lavatory cabinet assembly
961890-01	Face frame, lavatory cabinet
981891	Face frame, lavy, aft
964392-01	Top, lavatory cabinet
703053	Decorative border, wallpaper, self-adhesive
961899-02	Medicine cabinet assembly, lower
961897-01	Face frame, lower medicine cabinet
963753-01	Medicine cabinet assembly, upper
962170-01	Face frame, upper medicine cabinet

TABLE OF CONTENTS

FURNITURE

GALLEY, 34 LTD-FRONT LOUNGE MODEL

964953-01	Seat assembly, dinette L.H.
964499-01	Cushion support, L.H.
964950	Back, upholstered, L.H.
964334-01	Flex spring seat
964954-01	Seat assembly, dinette R.H
964498-01	Cushion support, R.H
964529-02	Back, upholstered, R.H
964334-01	Flex spring seat
703125-02	Top dinette seat, urethane buckskin
963674-004	Top, dinette table, NO MAR
962177-03	Table leg, hardwood
963763	Roof locker, dinette
963764-01	Face frame, dinette roof locker
963305-01	Refrigerator cabinet assembly
963724-02	Face frame, refrigerator cabinet
963757	Roof locker, galley
963354-01	Face frame, galley roof locker
964606-01	Galley cabinet, forward
964605	Face frame, galley cabinet forward
964586-02	Top, galley cabinet, Corian
964383-01	Range covers, Corian (pr.)
964411-01	Sink cover, R.H, Corian
964410-01	Sink cover, L.H., Corian
200980-01	Tray, silverware, almond

(Continued)

TABLE OF CONTENTS

FURNITURE

GALLEY, 34 LTD, -FRONT LOUNGE

964610-01	Galley cabinet, aft section
964328-01	Face frame, galley cabinet, aft
961247-02	Galley cabinet, pantry section
961072-01	Face frame, pantry
963358-01	Appliance, garage
800734-01	End, R.H, appliance garage
800734-02	End, L.H., appliance garage
800474-12	Door, tambour, appliance garage
800737-01	Handle, appliance garage
963357-02	Microwave, cabinet
963355-01	Face frame, microwave cabinet
964410-01	Sink cover, Corian, L.H.
964411-01	Sink cover, Corian, R.H
963991	Spice rack
963990	Magazine rack
381491	Trashcan, roll out
800631-004	Handrail, 23"

TABLE OF CONTENTS

Furniture

Galley, 34' TRAILER, SLIDE-OUT (S/O)

964997	Galley assy., forward
965020-002	Face frame, galley forward
965018-002	Face frame, galley forward
964999	Top assy, galley forward
965030-02	Microwave cabinet assy.
965029	Face frame, micro. Cabinet
962537	Top, micro. Cabinet
965305	Roof locker assy.
96503004	Face frame, galley roof locker
964999-01	Galley assy., cook top
965017-002	Face frame, galley cook top
963828-01	End cap assy., Galley R/L, L.H.
963829-02	Face frame, R/L, end cap
964411-02	Sink cove, R.H, Corian
964410-02	Sink cover, L.H., Corian
963680-01	Refer cabinet assy.
963724-01	Face frame, refer cabinet
703049	Bar stool, Ashley
965036-002	End cap, shelf assy.

TABLE OF CONTENTS

FURNITURE

GALLEY, 31 LTD ND

964965-04	Galley cabinet, forward section
964344-01	Face frame, forward galley cabinet
964961-02	Top, galley cabinet
964600-01	Galley cabinet, oven section
964599	Face frame, oven section, galley
964973-01	Sink covers
964383-01	Range covers, Corian
963761-01	Roof locker, galley
962167-01	Galley roof locker
962198-01	End cap, galley, L.H.
962225-02	Spice cabinet assembly
962224-01	Face frame, spice cabinet
964310-02	Refrigerator cabinet assembly
963724-01	Face frame, refrigerator cabinet
963688-03	Microwave cabinet, assembly
964628	Face frame, microwave cabinet
961072-01	Face frame, pantry
962537	Top, microwave cabinet
963991	Spice rack
964335	Galley lift-up shelf
963990	Magazine rack
381133	Rack sack, 6.5 liter, white
800631-004	Hand rail, 23"
200980-01	Tray, silverware, almond

TABLE OF CONTENTS

Furniture

Galley, 30' Limited

964966-04	Galley cabinet, assembly, forward
964629	Face frame, galley cabinet forward
964961-02	Top, galley, Corian
964973-01	Sink cover
964600-01	Galley cabinet assembly, oven assembly
964599	Face frame, galley oven section
964383-01	Range covers, Corian
963761-01	Galley roof locker assembly
962167-01	Face frame, galley roof locker
961198-01	End cap, galley roof locker, L.H.
963763-01	Dinette roof locker
963764-01	Face frame, dinette roof locker
962225-02	Spice cabinet assembly
962224-01	Face frame, spice cabinet
963680-01	Refrigerator cabinet assembly
963724-01	Face frame, refrigerator cabinet
964953-02	Dinette seat assy., L.H.
964449-01	Cushion support, dinette, L.H.
964529-01	Back, dinette, upholstered, L.H.
964334-01	Flex spring seat
703125-02	Top dinette seat, urethane buckskin
800631-004	Handrail, 23"
963990	Magazine rack

TABLE OF CONTENTS

FURNITURE

GALLEY, 30 LTD

964954-02	Dinette seat assembly, R.H
964498-01	Cushion support, dinette, R.H
964529-04	Dinette back, upholstered, R.H
964334-01	Flex spring seat
963674-004	Top, dinette table, NO MAR
962177-03	Table leg, hardwood
963991	Spice rack
964335	Galley lift-up shelf

TABLE OF CONTENTS

FURNITURE LOUNGE, 34 LTD

*702891-399	Sofa, jackknife, 74 in., Roman Sands
963400-01	Arm rest support assembly, RS
963400-03	Arm rest support assembly, CS
961959-02	Writing table/chair storage cabinet
961955-01	Face frame, chair storage
962875-004	Top, lift-up/writing table, oak
963353-02	Credenza assembly
963289-01	Face frame, forward credenza
963313	Face frame, aft credenza
963324	Top, credenza
986226-01	Leg, forward credenza
960420-06	Credenza table assembly
962878-014	Table leaf, lower
962879-014	Table leaf, upper
962177-03	Leg, hardwood
963598-01	Table, hi-lo, free standing
702889-418	Chair, swivel
963506-04	Front roof locker
963498	Face frame, front roof locker
381616-01	Chair, folding, Zip Dee, w/logo

*Changing the- (dash) number to

320 = GOLDEN OAK

470 = MANDALAY BLUE

389 = TROPICAL ISLE

350 = GEORGIA PEACH

379 = MOSAIC BLUE

460 = MYSTIC MINT

TABLE OF CONTENTS

FURNITURE

LOUNGE, 34FT SLIDE OUT (S/O)

703048	Sofa, 84", over all w/ armrest
963598-02	Table, Hi-Lo, Saratoga Oak
965181	Locker assy., front-end liner
965185-02	Face frame, front end, R/L, L.H.
965185-01	Face frame, front end, R/L, R.H
965186	TV cabinet assy.
965298	TV trim ring
453900	Bracket, TV, overhead
965051	Satellite receiver cabinet
965050-004	Face frame satellite cabinet
371378-01	Glass, front liner locker L.H. door
371378-02	Glass, front liner locker R.H door
371378-03	Glass, front liner locker L.H. door
371378-04	Glass, front liner locker R.H door
371706-01	Hinge, glass door
381706-02	Mounting plate, glass door
381707	Strike w/pull, glass door
381655	Strike, glass door, black
202273	Pans, ABS, front roof locker
965023	End table. L.H.
965021-004	Face frame, end table, L.H.
965027-004	Face frame, side, end table, L.H.
965025-01	Top assy., end table, L.H. Corian
965028	Magazine rack
965024	End table assy. R.H
965022-004	Face frame, end table, R.H
965026-01	Top assy., end table, R.H Corian

(Cont.)

TABLE OF CONTENTS

FURNITURE

LOUNGE, 34FT SLIDE OUT (S/O)

965048	File cabinet assy.
965047-004	Face frame, file cabinet
964016	Shelf assy., pullout
965033-004	Frame assy., pull out shelf
965013-01	Top assy., fireplace
965009	Credenza assy., L.H., front
965004-004	Face frame, front credenza, L.H.
965014-01	Top assy., front credenza, L.H., Corian
965010	Credenza assy., R.H
965005-004	Leg, front credenza
965015-01	Top assy., front credenza, R.H, Corian
381701	Tray, keyboard w/mouse pad
965036-004	End cap shelf assy.
965055-01	Upper, R.H, cabinet assy
965054-014	Face frame, R.H, upper cabinet assy.
965055-02	Upper cabinet assy., L.H.
965054-024	Face frame, upper cabinet assy., L.H.
OPTION	
965093	Credenza assy., R.H front
965014-02	Top assy., front credenza, R.H front
965004-01	Face frame, front credenza, R.H front
SLIDE OUT INTERIOR	
801304	Shim, slide out roller
965155	Spacer block, travel lock assy.
801303-01	Facia board aft
801303-02	Facia board, fwd.
114974	Bracket, TV support
965008	Cabinet assy., fireplace
965003	Face frame, fireplace cabinet
965032-01	Hearth assy.
965013-01	Top assy., fireplace

TABLE OF CONTENTS

FURNITURE

LOUNGE, 31 LTD ND

*702888-399	Sofa, jackknife, 74in., Roman Sands
963400-01	Arm rest support assembly, RS
963400-03	Arm rest support assembly, CS
961959-04	Writing table/chair storage cabinet
961956-01	Face frame, chair storage
962875-004	Top, lift-up/writing table, oak
964408-03	Credenza assembly
963729-01	Face frame, credenza
964409-01	Face frame, forward credenza
964510-004	Top, credenza
986226-01	Leg, forward credenza
960420-06	Credenza table assembly
962878-014	Table leaf, lower
962879-014	Table leaf, upper
962177-03	Leg, hardwood
963506-04	Front roof locker
963498	Face frame, front roof locker
381616-01	Chair, folding, Zip Dee, w/logo
381507	Clock, quartz, w/gold trim

*Changing the- (dash) number to

320 =Golden Oak

350 =Georgia Peach

470 =Mandalay Blue

460 =Mystic Mint

TABLE OF CONTENTS

FURNITURE LOUNGE, 30 LTD

702888-399	Sofa, jackknife, 74in., Roman Sands
963400-01	Arm rest support assembly, RS
963400-03	Arm rest support assembly, CS
961959-04	Writing table/chair storage cabinet
961955-01	Face frame, chair storage
962875-004	Top, lift-up/writing table, cabinet
962015-02	Lift-up table cabinet
986226-01	Leg, forward credenza
960420-06	Credenza table assembly
962878-014	Table leaf, lower
962879-014	Table leaf, upper
962177-03	Leg, hardwood
963219-03	End table assembly
962291-01	Face frame, end table cabinet
962876-004	Top, end table
962202-04	TV cabinet assembly
922200-01	Face frame, TV cabinet
963506-04	Front roof locker
963498	Face frame, front roof locker
381616-01	Chair, folding, Zip Dee, w/logo

*Changing the- (dash) number to

320 =Golden Oak

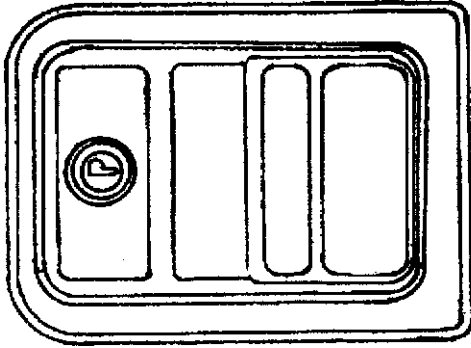
350 =Georgia Peach

470 =Mandalay Blue

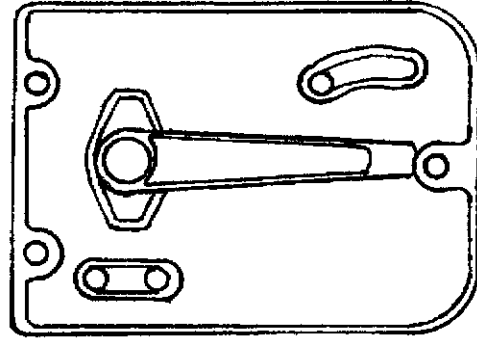
460 =Mystic Mint

2001 LIMITED TRAILER

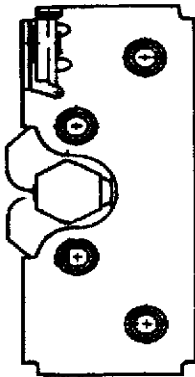
HARDWARE MAIN DOOR LOCK



381547-01
Main door lock, outside
Housing



381547-02
Main door lock, inside
plate



381547-03
Double rotary
Latch, main door lock



381547-04
Striker bolt w/washer
main door lock



381550
Plate, striker bolt
mounting

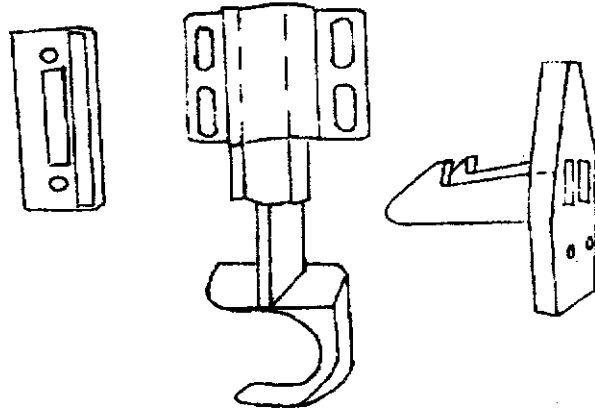
Not shown:

381547-05 Screw package, main door lock
453851 Deadbolt assy.

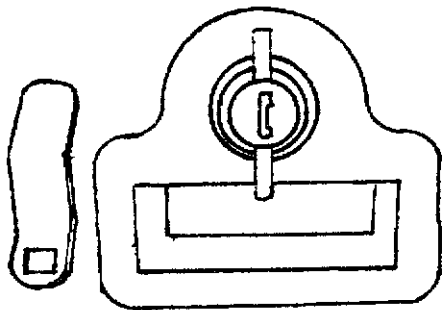
2001 LIMITED TRAILER
HARDWARE
EXTERIOR LATCHES/LOCKS



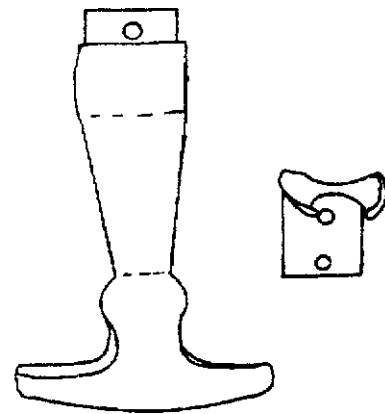
511341 Grab handle
Embossed "LIMITED"



381454 Latch, screen door, bullet



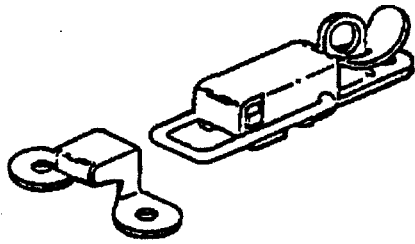
380770-101 Twist lock, chrome



381021 Rubber T handle

2001 LIMITED TRAILER

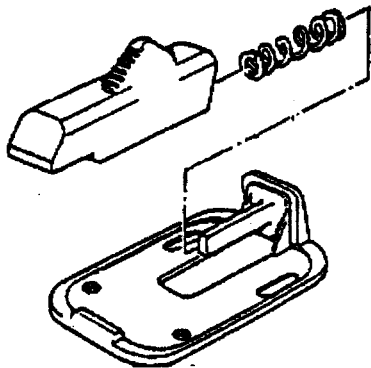
HARDWARE EXTERIOR LATCHES/LOCKS



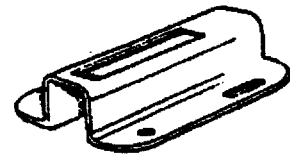
340023 Corbin catch
w/ strike, battery box



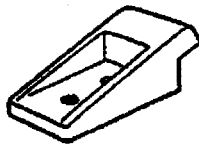
380067 Lockcam
Bumper lid



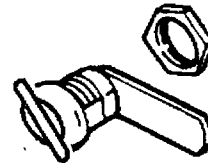
380291 Main door hold back
(use w/housing #380290)



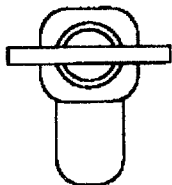
380290 Latch housing,
Main door hold back



380430 Catch main door
hold back

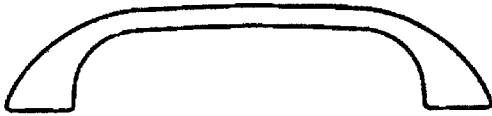


201056 Twist lock, refer
door, straight cam

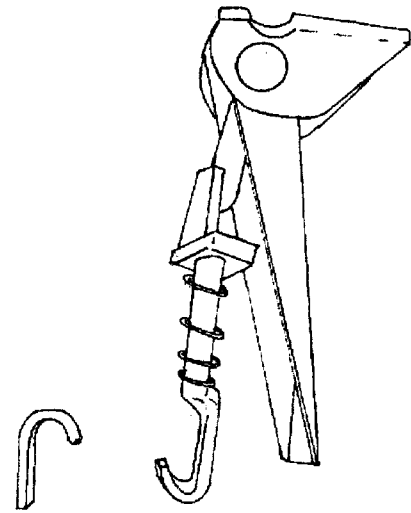


381430 Lock, twist straight cam,
Battery box

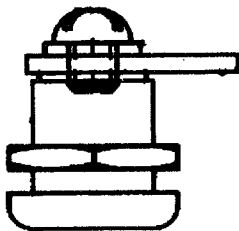
2001 LIMITED TRAILER
HARDWARE
EXTERIOR LATCHES/LOCKS



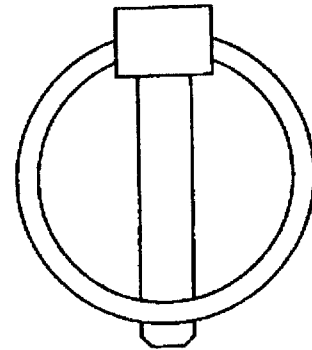
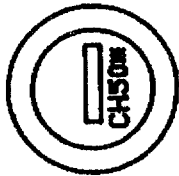
380004
Handle,screen door



380903 Latch w/strike
chrome,gas bottle cover



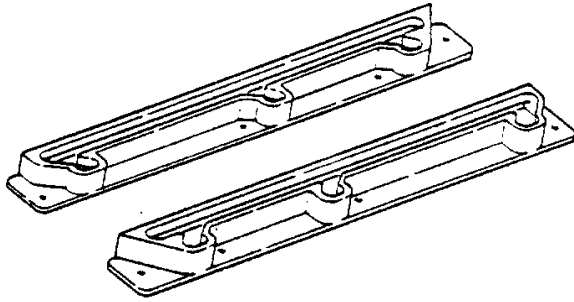
381397 Key cylinder
w/cam



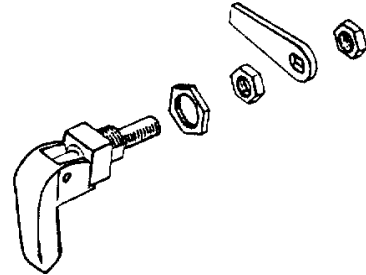
310028 Lynch pin
roll out storage tray

2001 LIMITED TRAILER

HARDWARE WINDOW HARDWARE



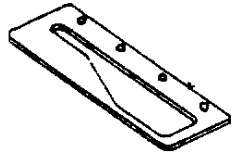
683975 Window guide, R.H.
683975-01 Window guide, L.H.



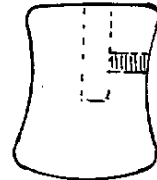
010020 Lower window latch
381088 Latch w/red handle



685123 Pawl,
Window latch,
Straight



685124 Striker
plate, window
latch



380230-03 Knob,
window arm, silver
-04, red

Misc. not shown:

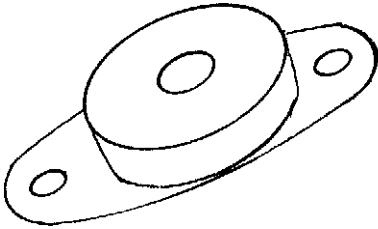
0703-0001
0703-0010
0706-0003
0706-0004
0802-0004
0802-0005

Screw 8-32 x 1/2, black
Screw 8-32 x 1/2, stainless
Washer, flat, nylon, clear
Washer, flat, nylon, black
Screw cap, black
Snap cap washer, clear

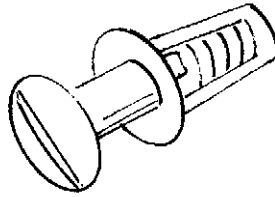
2001 LIMITED TRAILER

HARDWARE ROCK GUARD

685363	Slip joint hinge
683960	Support arm, rock guard
683959	Bracket, arm support
114749	Hinge "Y" assembly
114750	Hinge "J" rock guard
381021	Draw latch, black rubber



685359
Rubber receptacle
1/4 latch, Southco



685342
Stud, 1/4 turn latch
Southco

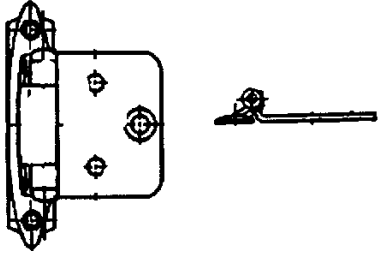


685362
Retaining ring
1/4 turn stud

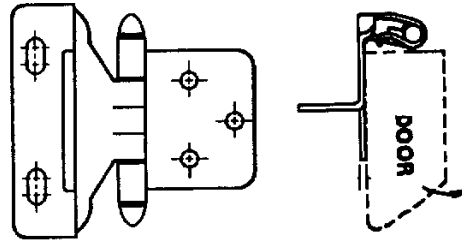
Used on stone guard and wrap protector

2001 LIMITED TRAILER

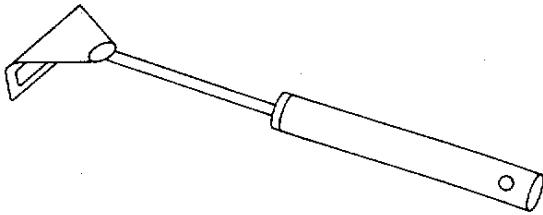
HARDWARE INTERIOR LATCHES/HINGES



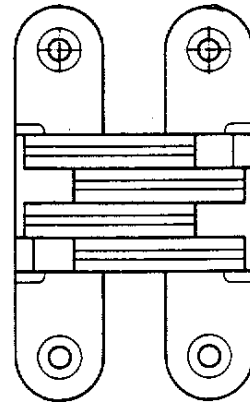
381601 Hinge,
Antique brass



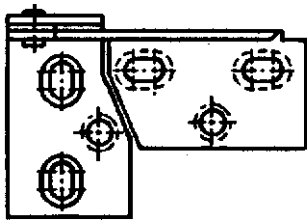
381602 Hinge,
semi-concealed, antique brass
(Used on front & rear roof lockers)



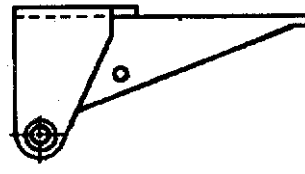
381147 Door support
Spring loaded



380040 Soss hinge
credenza table



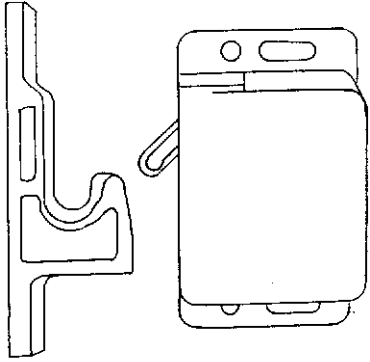
385935 Hinge, pivot, brass for bath mirror



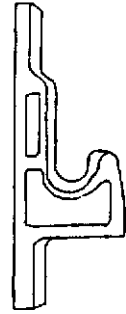
2001 LIMITED TRAILER

HARDWARE

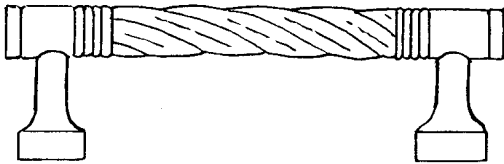
INTERIOR LATCHES/HINGES



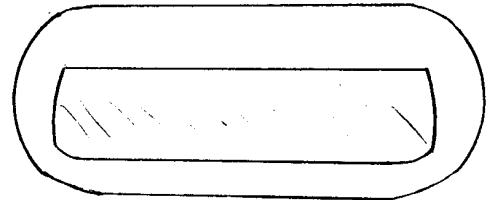
381228 Grabber door latch
W/catch, 10 lb. Rating
381228-01 Grabber door latch
W/catch, 3lb. rating



381228-100
Catch only,
grabber door latch



381681 Door handle,
Brass/acrylic



381576 Pull handle,
brass

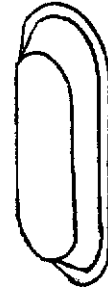
2001 LIMITED TRAILER

HARDWARE

INTERIOR LATCHES/HINGES



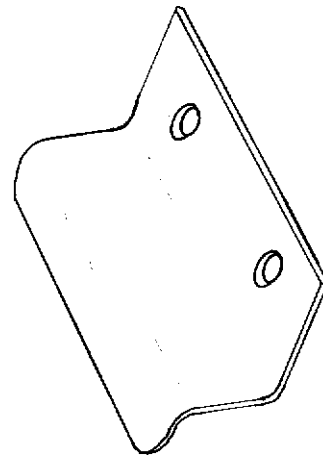
201427 Finger pull,
Light brown



381603 Pull, three-finger
Antique brass



381444 Hatch pull



385940-02 Mirror pull, chrome

2001 LIMITED TRAILER

HARDWARE

DRAWER SLIDES

381526-01	Drawer slide-950-RV, 14"
381526-03	Drawer slide-950-RV, 18"
381526-04	Drawer slide-950-RV, 20"
381526-06	Rear bracket, drawer, adjustable
381414-144	Slide, drawer-Delta, 14.5"
381400	Slide, drawer, 14", 2900-14
381400-01	Slide drawer, 12", 2900-12
381415	Slide, drawer, Delta 105
381192	Slide, drawer, 18"
381090	Slide, drawer, 22", dinette

BATHROOM ACCESSORIES

381275	Toilet paper holder w/ hood, brass
381254	Tooth brush/tumbler holder, brass
381626-01	Towel bar, 18", brass
381255	Soap dish, brass

CREDENZA TABLE HARDWARE

381306	Lift up table slides, one right & one left
201155	Table sliding guide, plastic
380037	Latch, nail & spring, table
380038	Eyelet, lock, brass

WRITING TABLE HARDWARE

381284-02	Bracket, table hinge
101253	Extrusion, hinge, movable
380492	Bracket, table, writing
340018	Plate, catch

2001 LIMITED TRAILER

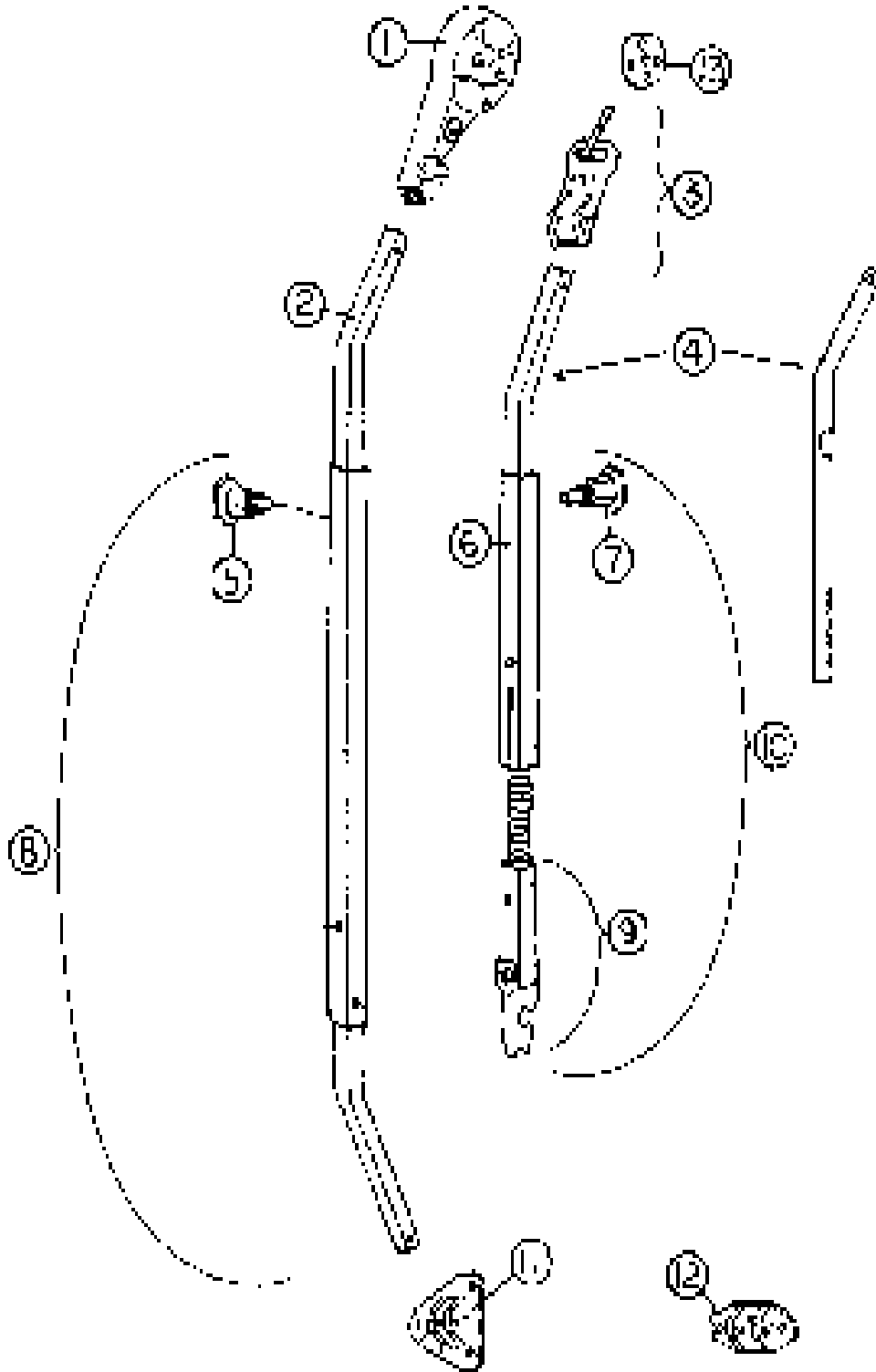
HARDWARE

MISCELLANEOUS

701342-01	Vinyl strap, sliding door hold back (Female snap on both ends)
381443-01 200009	Sliding door set (includes, carriers, top plate and track) Guide, sliding door
*381385	Dual lock #400-1" strips
*381386	Dual lock #170-1" strips
380045	Clothes rod
200975-04	Conduit, flexible, black (covers clothes rod)
380046	Bracket, clothes rod
381298	"J" bracket, center clothes rod support
381067-09	Gas prop, bed 90lbs.
381262	Bracket w/ball stud, gas prop
381084	Ball stud
381058	Clip, prop rod
381133	Rack pack, 6.5 liter, white
381164	Shelf bracket, folding, galley lift-up shelf
381269	Trailer level, Level Master
385940	Mirror pull
381408	Latch, push button, pantry
381599	Knob, galley drawer door
381527	Shelf supports, Speedy strips
381726	Cabinet knobs, Brass/Acrylic/screws
320131	Wing nut, Karran sink
453833	Clip, sink mount

*These two parts work similar to Velcro but have interlocking knobs rather than hooks and loops.

2001 LIMITED TRAILER

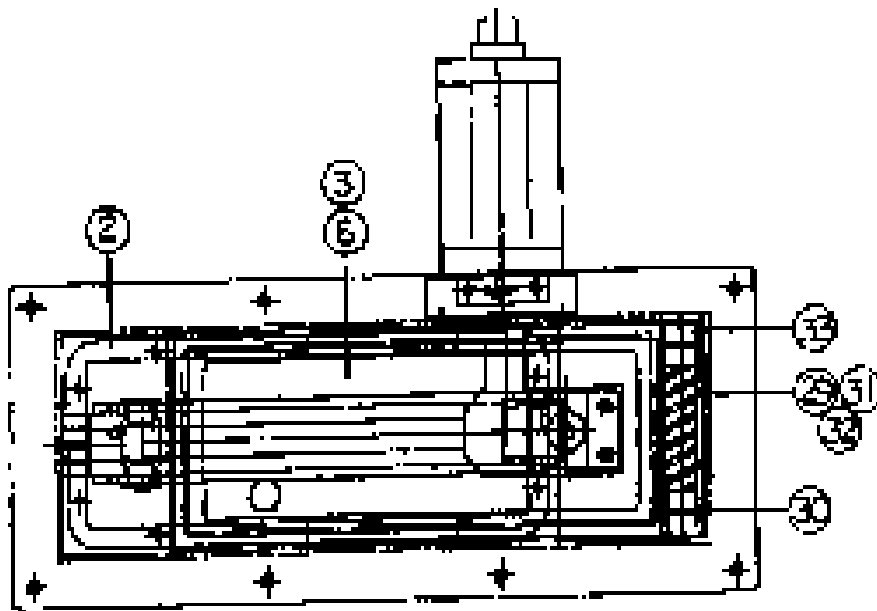
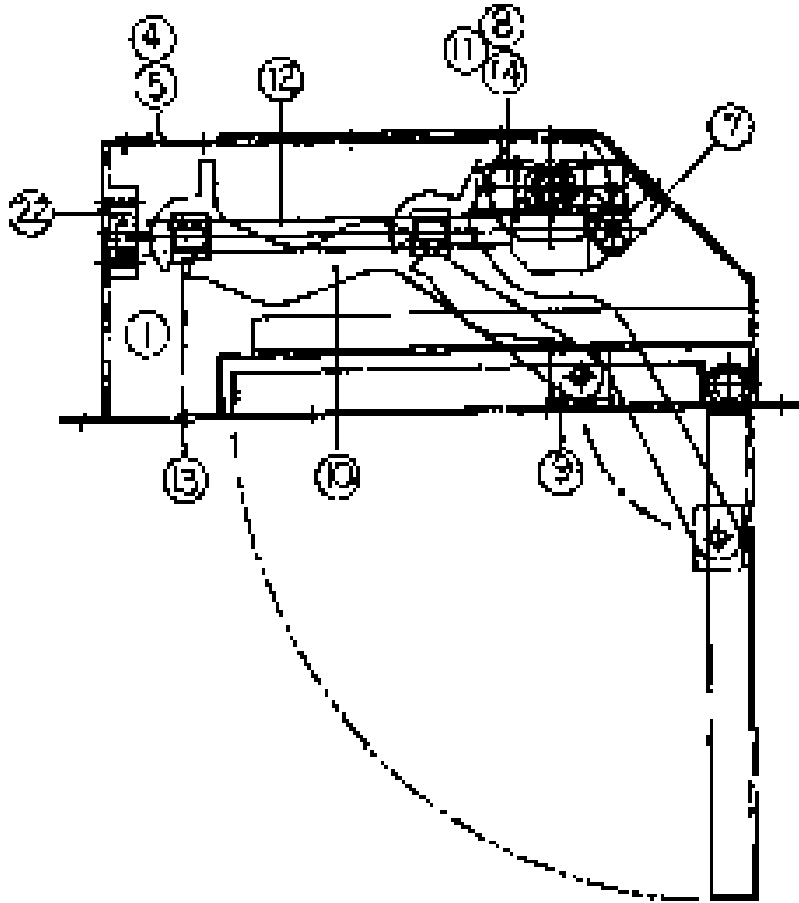


2001 LIMITED TRAILER

AWNING HARDWARE

1) 74043W-04	Head assembly, front
1A) 74043W-05	Head assembly, Rear
2) 74047W-09	Main arm bar, front
2A) 74047W-10	Main arm bar, rear
3) 74056W	Clamp assembly, front, curved
3a) 74056W-01	Clamp assembly, rear, curved
4) 74061W-07	Rafter arm bar, satin
5) 74054W	Snap stud assembly
6) 74063W-03	Rafter arm tube, satin
7) 74072W	Ratchet stud
8) 74048WS-12	Main arm tube assembly, front
8a) 74048WS-13	Main arm tube assembly, rear
9) 74068W-03	Claw bar assembly
10) 74048WS-14	Rafter arm assembly
11) 74055W	Base hinge, rib mount
12) 74055W-01	Base hinge, floor mount
13) 74060W	Clamp wheel

2001 LIMITED TRAILER



2001 LIMITED TRAILER

SLIDE OUT TRAILER PADDLE LATCH

9526401 Travel paddle latch assy., FWD
952648-02 Travel paddle latch assy., AFT

1)453802-02	Housing, aft
2)453802-01	Housing, fwd
3)453801	Close out
3)453800	Door
4)453799	Cover
5)365254	Cover seal
6)365253	Door seal
7)453775	Drive mounting bracket
8)453776	Motor mounting bracket
9)453789	Door bracket
10)453786	Drive arm
11)511538	Motor, 80 in/oz
12)511539	Drive unit, L.H.
12)511540	Drive unit, R.H (same location on drawing as 12)
13)511540	Drive nut
14)511542	Flex shaft
15)345395*	Screw, self drilling, *10x.675
16)345396*	Screw, sheet metal, *6xl.25
17)345397*	Screw, sheet metal, #6x.375
18)381716*	Rubber grommet
19)381717*	Clevis pin, headless
20)381718*	Retaining ring, E style
21)381719*	Washer, flat nylon
22)381250	Drive support, nylon
23)345398*	Screw machine #6-32xl"
24)345399*	Nut, Keps, #6x32
25)345400*	Screw machine, #4-40xl"
26)345401*	Nut, Keps #4-40
27)381720*	Teflon standoff
28)511543*	Switch, miniature, 10 amp.
29)381721	Spring, compression
30)381722	Washer, flat, nylon
31) 453778	Hinge pin, door
32) 453779	Hinge member, door mount
33) 453780	Hinge member, Box mount

* Not shown

2001 LIMITED TRAILER

NOTES

2001 LIMITED TRAILER

LABELS AND TAGS

385193	Label, "12V distribution panel inside"
385048	Label, approval with shield
385269	Label, "DON'T USE AREA FOR STORAGE"
385068	Tag, cooking appliance warning
385067	Label, EXIT
385547	Label, LP gas warning/fill
385517	Label, kill switch warning
385521	Label, emergency egress window
385463	Warning label/cooking appliance
385464	Label, LP gas warning label (odor)
385465	Exit label, English
385560	Label, air conditioner rating
385512	Label, California. Hazardous substance
385609	Label, smoke detector
385359	Label, microwave or air conditioner
385837	Label, refrigeration ignition
385103	Plate, RVIA
385418-01	Label, Federal registration
385062	Decal, 110-125 voltage AC
385565	Label, holding tank flushing
386012	Label, warning-water heater
385101	Tag, Aux. Tank dump valve
385099	Tag, Main dump valve
386019	Label, 1 amp. Fuse
385988	Decal water heater
386060	Label, Satellite recover jack

2001 LIMITED TRAILER OPTIONS

3210059	Spare tire and wheel, steel, BSW, 6ply, 15"
381318-05	Skylight, 19.5" x 19.5", galley/lounge
114485	Mounting frame, skylight
201962	Trim ring, skylight
702804-03	Shade, pleated, skylight, 19.25" x 20.00"
381318-06	Skylight, 14.5" x 22.5" bath
114486	Mounting frame, skylight, bath
201963	Trim ring, 14" x 22", skylight, white
702804-04	Shade, pleated, skylight, 14.5" x 22.75"
690396-01	Range w/oven, Maytag
114876	Trim ring, range recess
690407-01	Microwave, Dometic, black
690407-02	Trim kit, Dometic microwave
690345-01	Microwave/convection, Sharp
690345-03	Trim ring, convection microwave
511190	CD changer, 10 unit, Sony, CDX-606
511383-02	Remote control, Sony, RM-X41
703049	Bar stool, 24" Hensley Arrow
703047	Swivel, recliner, w/gliding footstool, Beige
703045-01	Swivel, recliner, w/glider, Oyster Bay
690413	VCR, Sony, HI-FI

2001 LIMITED TRAILER

PLUMBING

LP BOTTLE RACK, STAND-UP

410504	LP bottle ring, lower
410566	LP bottle support plate w/rod holder
410641	LP regulator mounting bracket
410410	Hold down rod, threaded, for 40lbs bottle
100949	Bracket, bottle hold, cast aluminum
410238	"T" handle, threaded, cast aluminum

LP BOTTLES AND FITTINGS

601712	Bottle, LP, aluminum, vertical w/gauge
601712-01	Bottle, 40#, Aluminum, CSA
601377-01	Regulator, Fisher
601335	LP hose, tank to regulator, 35"
601732	LP hose, tank to regulator, 36"
601775	LP hose, 18"
410705	Bracket, mounting LP regulator

2001 LIMITED TRAILER

PLUMBING

FITTINGS

600468	Union flare, 5/8" x 5/8"
600238	Union flare, 3/8" x 3/8"
600004	Copper tubing, 5/8"
600008	Copper tubing, 3/8"
600436	Flare nut, forged, 5/8"
600435	Flare nut, forged, 3/8"
600000	Tee, brass, 5/8" x 5/8" x 3/8"
600003	Tee, brass, 5/8" x 3/8" x 3/8"

BOTTLE COVERS

104265	Gas bottle cover w/o decal, 40lbs, vertical
380903	Latch and strike
200845	Lid, plastic, bottle cover
380773	Hinge, access door
201981	Bottle cover, horizontal w/out decal
381320	Door catch, chrome
452279	Hold down bracket, black
381277	Knob, hold down, w/1/4-20 stud
381413	Hinge, slip joint, LP cover
381170	Vent, round, colonial white
452946	Bracket, LP cover hold up

2001 LIMITED TRAILER

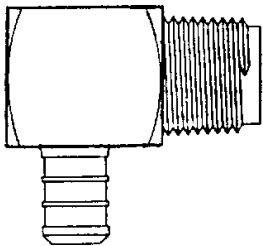
PLUMBING FRESH WATER

601194	Water fill w/lock, gray
601621-01	Tank, fresh water
601243	Drain cock, fresh water tank
600155	Plug, water tank, 1.5"
600836	Elbow, 1/2" barb x 3/8" MPT
601237	Plastic elbow, 90 degree, 1.25"MPT x 1.25"barb
601239	Tubing, 1.375" I.D., flexible, water fill hose
601061-03	Water pump, Shurflo
601668	Filter, pre water-pump
601464	Tank, accumulator, Shurflo
381435	Hatch, water hose exit

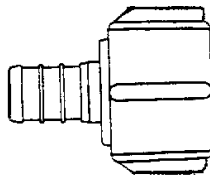
CITY WATER

601467	Sillcock, 1/2"FP w/wheel handle
601469	Vacuum breaker, 3/4" garden hose
601197-01	Water hook-up, chrome
601392	Water fill, chrome
600139	Check valve, brass
601565	Hose, water, 12" w/fittings

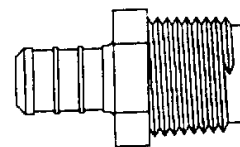
FITTINGS



601698-04
Elbow, 1/2" barb
x 1/2" MPT



601698-03
Coupler, 1/2" barb
x 1/2" FPT

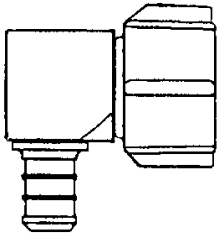


601698-02
Coupler, 1/2" barb
x 1/2" MPT

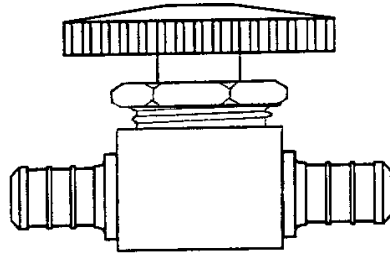
(Continued)

2001 LIMITED TRAILER

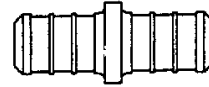
FRESH WATER-FITTINGS



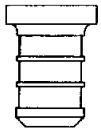
601698-05
Elbow 1/2" barb x
1/2" FPT



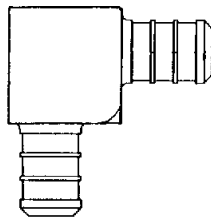
601698-07
Shut-off, 1/2" barb x
1/2" barb



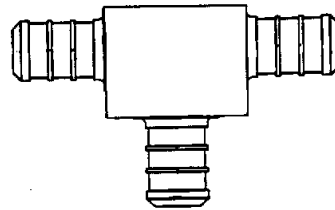
601698-08
Coupler
1/2" x 1/2" barb



601698-09
Plug, 1/2" barb
1/2" barb



601698-10
Elbow 1/2" barb x
1/2" barb



601698-11
Tee, 1/2" x 1/2" x
1/2"

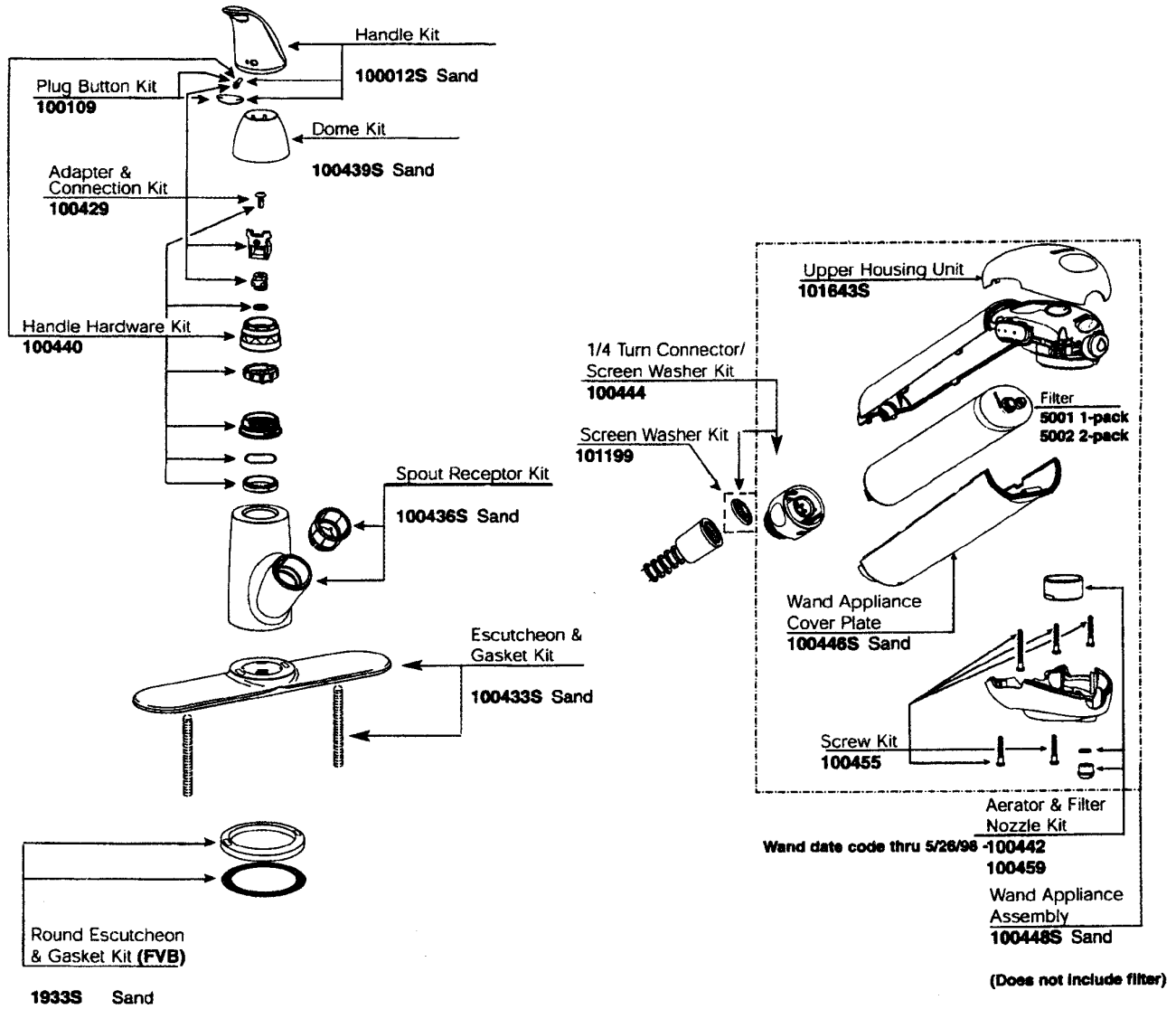


601698-15
Crimp ring, 1/2
E-Pex, 1/2", black



601698-01
E-Pex tube, 1/2"

2001 LIMITED TRAILER

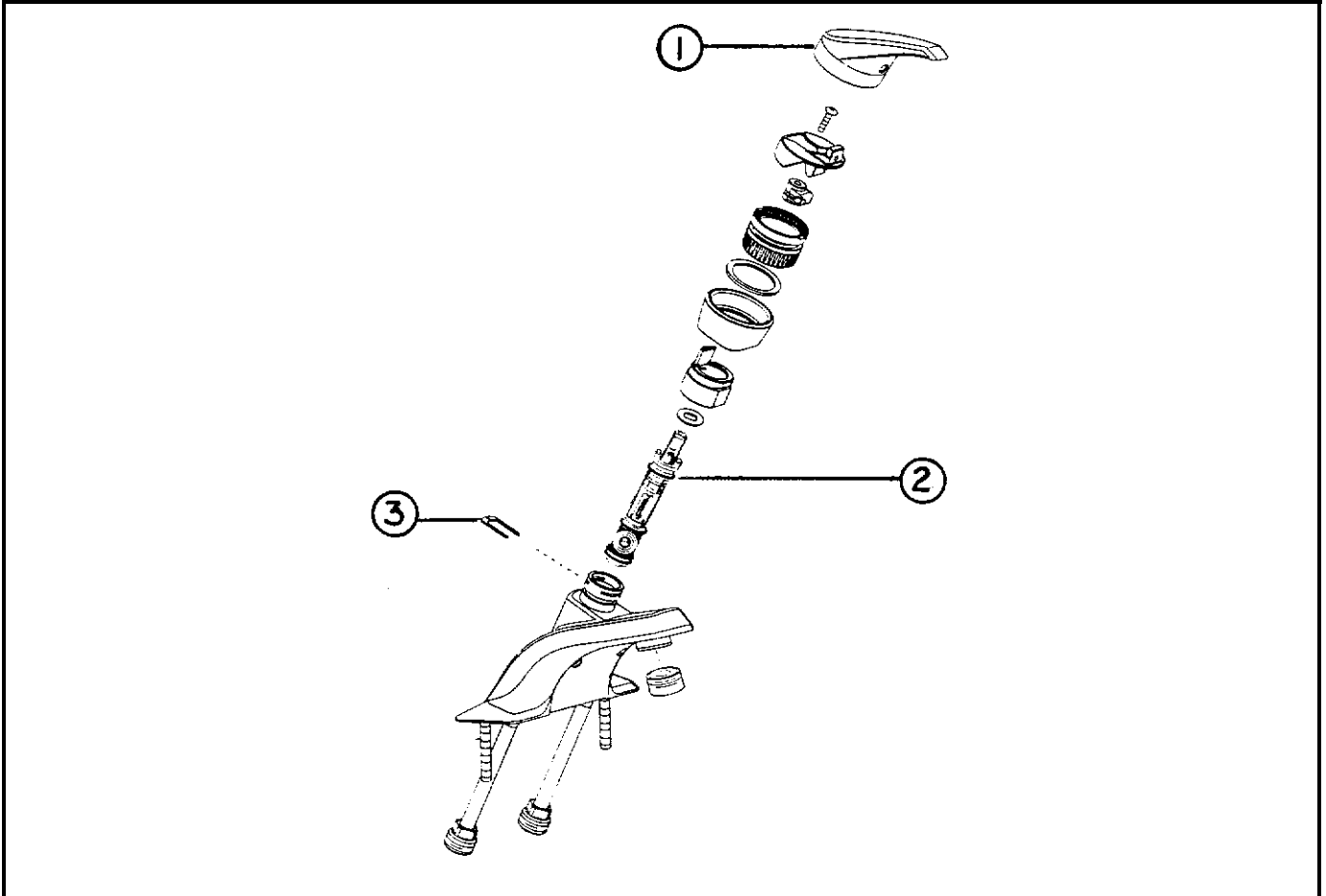


601747 Puretouch Faucet Model 7850S

- | | | | |
|------------|-----------------------------|------------|---------------------|
| 601747-101 | Handle kit | 601747-102 | Handle hardware kit |
| 601747-103 | Dome kit | 601747-104 | Spout receptor kit |
| 601747-105 | Escutcheon/gasket kit | | |
| 601747-106 | ¼-turn conn. /screen washer | | |
| 601747-107 | Wand appliance kit | | |
| 601747-108 | VAC. Breaker hub kit | | |
| 601747-109 | Hose service kit | | |

Parts may be ordered direct from Moen at 1-800 Buy Moen. Use Moen P/N in the drawing above

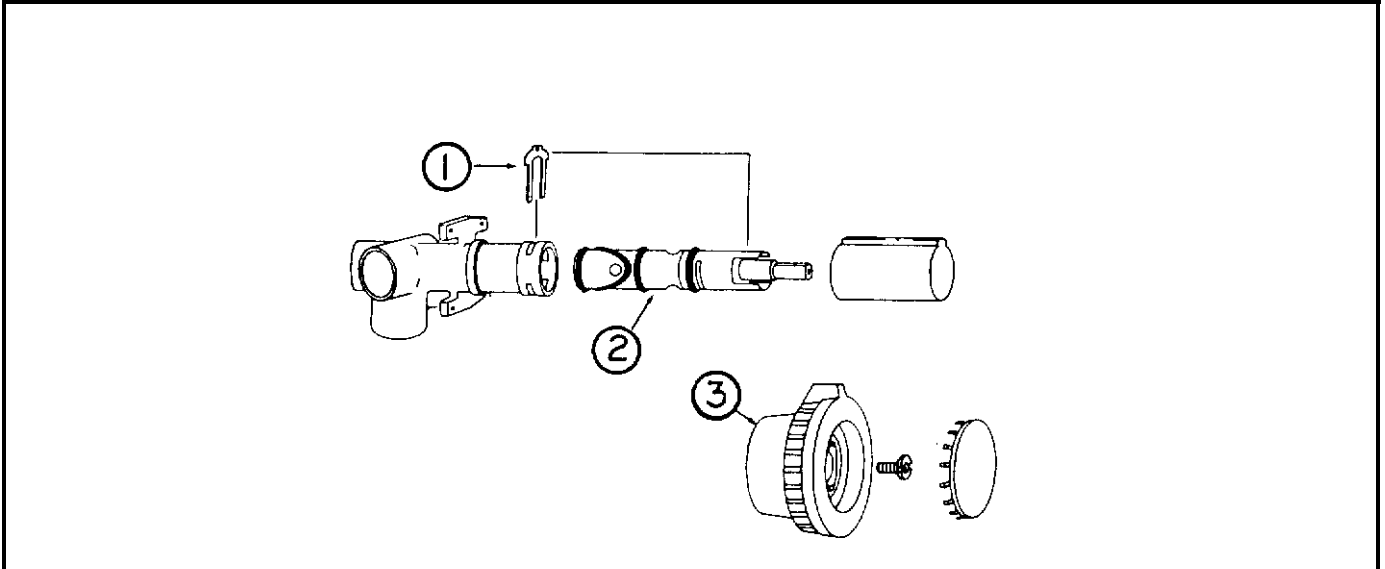
2001 LIMITED TRAILER
PLUMBING
FRESH WATER



690390-01 Lavatory faucet, Moen, polished brass

- | | |
|---------------|---------------|
| 1) 690390-100 | Lever handle |
| 2) 601579-105 | Cartridge |
| 3) 601579-104 | Retainer clip |

2001 LIMITED TRAILER
PLUMBING
FRESH WATER



601420-02 Shower faucet, polished brass

- 1) 000883 Retainer clip
- 2) 601420-100 Cartridge#1200
- 3) 001041 Handle

Shower stall fittings

- 601359-101 Elbow with flange, brass
- 601173 Vacuum breaker, brass
- 601175-01 Shower hose, brass
- *601257 Shower head w/shut-off, brass
- 601359-100 Wall holder, showerhead, brass
- 601359 Shower unit, polished brass

*Replaced by 601226 5/26/02

2001 LIMITED TRAILER PLUMBING-DRAIN SYSTEM

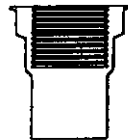
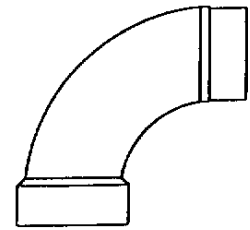
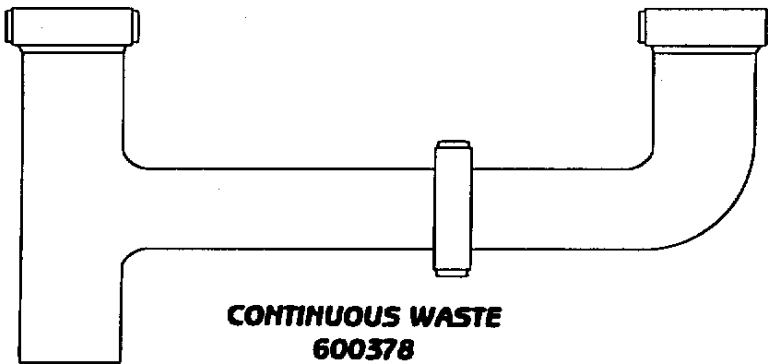
601633-06	Sink, galley, porcelain
600968	Basket strainer, galley
203046-03	Shower stall, angled, 2 piece
601362-01	Drain, tiptoe, shower, polished brass
203367-01	Sink, lavy, Karran
601431	Dump valve, w/o handle
04190	Handle extension, dump valve
114086	Bracket, dump valve extension
600187	Wye, 3", comb. & 1/8" bend
600820	Single socket, 3", 90 degree
601323	Female fit & "O" ring, dump valve
600289	Calder coupling, 3", rubber
380481	Boot, rubber, 3" drain line
0310107	Waste valve adapter
600182	Wye, 1.5" x 1.5" x 1.5 ", 1/8" bend
601160-04	Pipe, 3" ABS
601160-02	Pipe, 1.5" ABS
01639	Bayonet ring, 3" Thetford
01664	Cap, 3" sewer outlet, Thetford
600065	Flange, floor, threaded
601767-01	Tailpiece, Lavy, brass
601441	Tank flush, no-fuss (vacuum breaker & check valve)
601441-01	Nozzle, tank mounted, no-fuss flush
60032-01	Water inlet, garden hose thread, tank flush

2001 LIMITED TRAILER

Plumbing Drain System

601623-01	Tank, black, holding, 30ft
601622-01	Tank, gray, holding, 30ft
601622-03	Tank, gray holding, 31 & 34ft
601623-06	Tank, black holding, 31 & 34ft
601619	Pan, waste tank
453702	Shield, Fresh water tank, drain valve

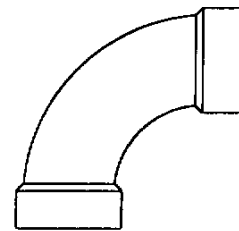
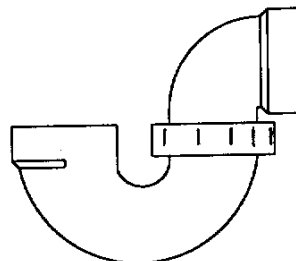
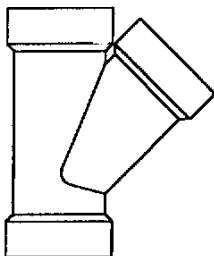
2001 LIMITED TRAILER
PLUMBING-1.5" FITTINGS



**TRAY ADAPTOR
600625-01**

**TRAY ADAPTOR
600625-02**

**SWIVEL
ADAPTER
600822**



**WYE
#2301
600094**

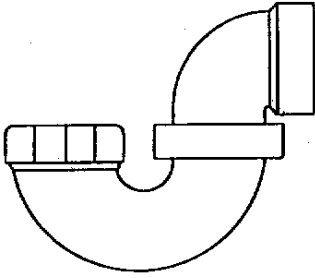
**P-TRAP
1.5" W/O SLIP NUT
600144**

**ELBOW 90D
LONG TURN
600035**

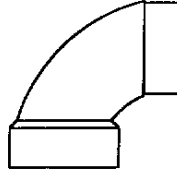
(Continued)

2001 LIMITED TRAILER

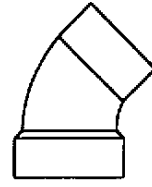
1.5" DRAIN FITTINGS



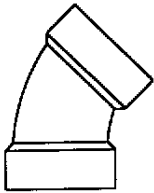
**P-TRAP
1.5" WITH SLIP NUT
600622**



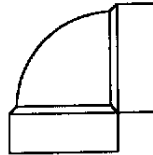
**ELBOW 90D
SHORT ST
600662**



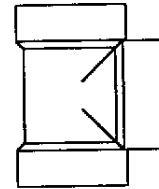
**ELBOW 45D
LONG ST
600027**



**ELBOW 45D
LONG TURN
600030**



**ELBOW VENT
90D
600033**



**TEE-BI DIRECTIONAL
CLEAN-OUT 1.5"
601318**



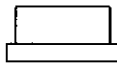
**PLUG 1.5"
600155**



**VENT 1.5"
600538**



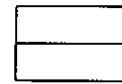
**CAP 1.5"
601677**



**REDUCER 1.5" TO 1.25"
601263**



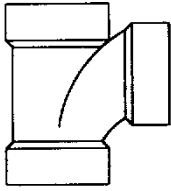
**ADAPTER
601676**



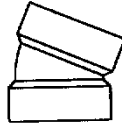
**ADAPTER
W/FEMALE THREADS
600308**

2001 LIMITED TRAILER

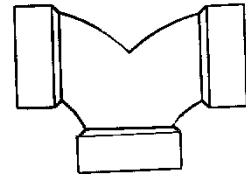
1.5" DRAIN FITTINGS



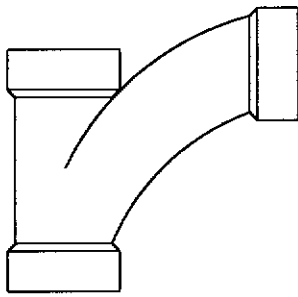
**TEE-SANITARY
1.5"
600156**



**ELBOW 22.5D
SHORT TURN
600116**



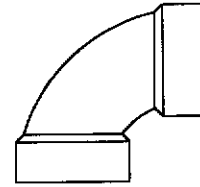
**ELL DOUBLE 1.5
195329-486**



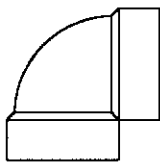
**WYE 1.5"
1/8" BEND
600182**



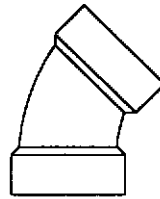
**COUPLING
1.5"
600227**



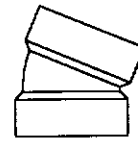
**ELBOW 90D
SHORT SWEEP
601636**



**ELBOW VENT
90D
600033**



**ELBOW 45D
LONG TURN
600030**



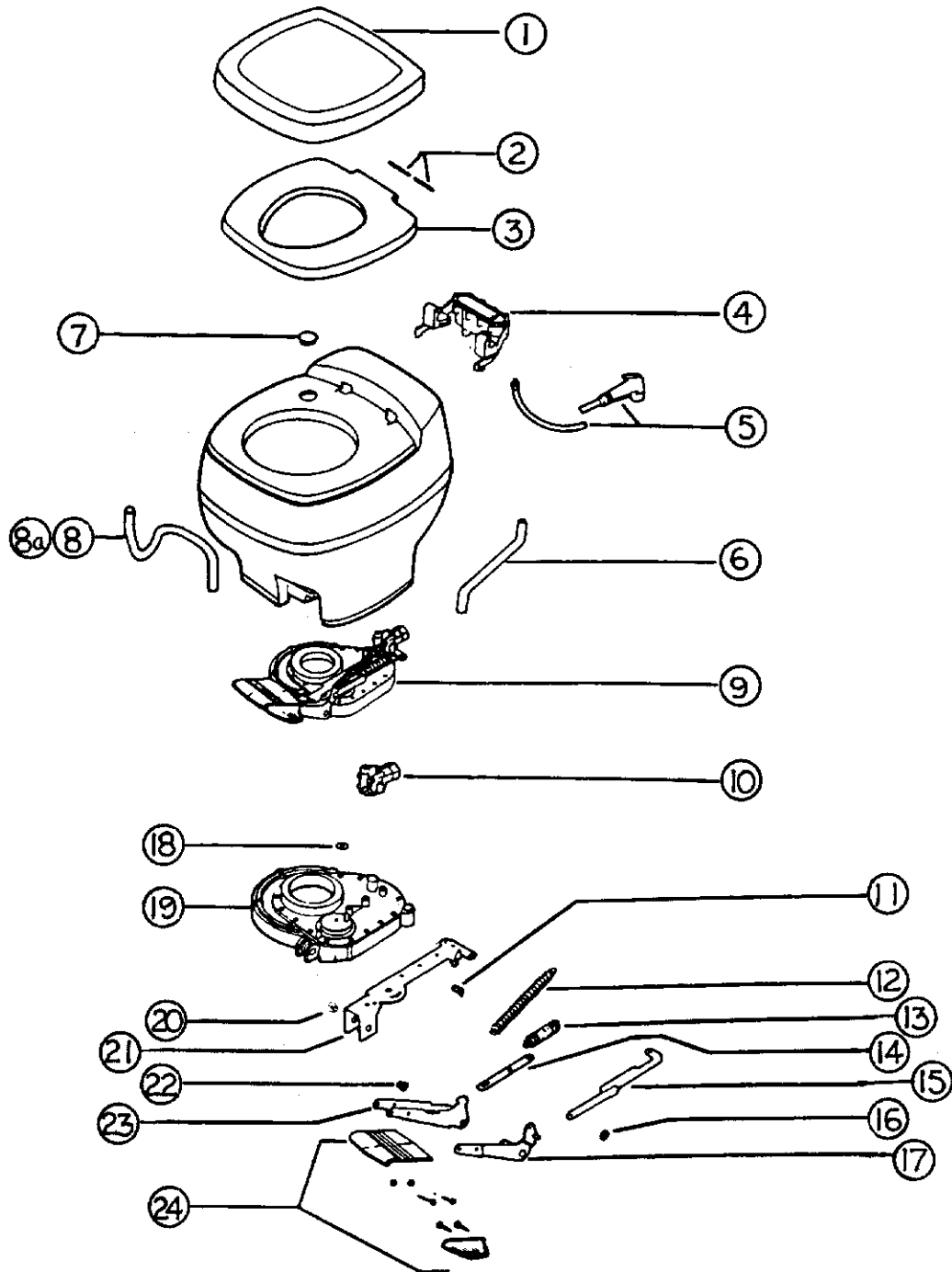
**ELBOW 22.5D
SHORT TURN
600116**

2001 LIMITED TRAILER
NOTES

2001 LIMITED TRAILER

PLUMBING

THETFORD, AQUA MAGIC GALAXY, PARCHMENT



2001 LIMITED TRAILER

PLUMBING

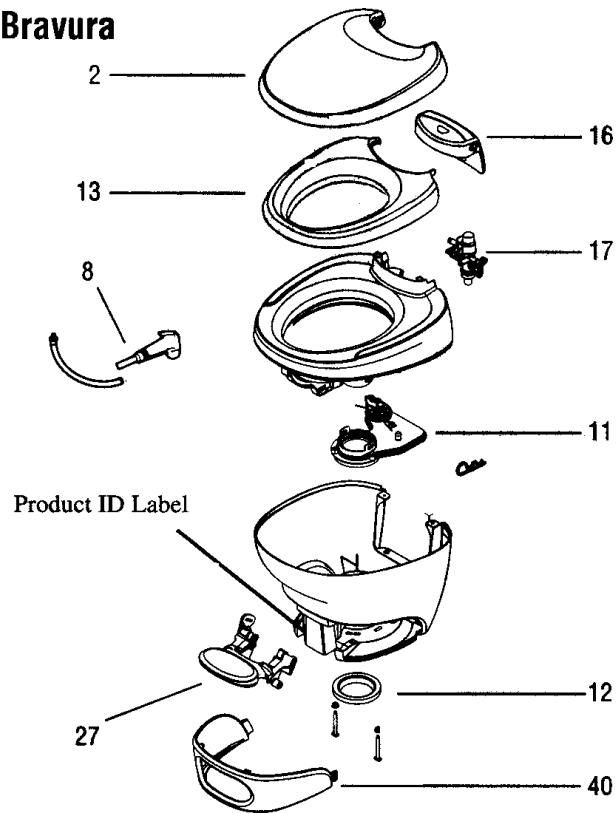
THETFORD, AQUA MAGIC GALAXY, PARCHMENT

690327-02 Toilet complete, Aqua Magic Galaxy, high

- 1) 020925 Padded seat cover, parchment
- 2) 012986 Hinge pin
- 3) 1626457 Seat, parchment
- 4) 008217 Vacuum breaker w/water saver, parchment
- 5) 008993 Water saver package
- 6) 003728 Water supply tube
- 7) 003895 Hole plug, parchment
- 8) 003729 Trap tube, 20", low style
- 8a) 003727 Trap tube, 27", high style
- 9) 024203 Mechanism, parchment
- 10) 009868 Ball valve replacement package
- 11) 002391 Drive arm assembly
- 12) 002802 Spring, ball valve return
- 13) 002801 Spring
- 14) 008986 Push link
- 15) 002796 Drive arm
- 16) 002394 Ring, retainer
- 17) 009421 Pedal arm assembly
- 18) 008034 Retainer ring, 1/4"
- 19) 020929 Base and cover assembly
- 20) 003749 Bushing, mechanism
- 21) 012593 Lever plate
- 22) 003749 Bushing, mechanism
- 23) 019266 Pedal arm
- 24) 020930 Double pedal package

2001 LIMITED TRAILER

Bravura



Theford Bravura toilet P/N 690442-02

Before ordering parts, record the Product ID information.

No. Description	No. Description
1 Hinge Pins (2)	22 Bracket & 2 Screws†
2 Seat Cover	23 Float Assy.
3 Vacuum Breaker	24 Actuator Assy.
4 Flush Tube	25 Base to Bowl Screws (9)
5 Flush Nozzle Assy.	26 Closet Bolt Pkg.
6 Overflow Trap	27 Pedal Pkg.†
7 Water Supply Tube	28 Base
8 Hand Spray Kit (Water Saver Option Only)	29 Retainer & Screw†
9 Side Access Covers (2)	30 Sealant
10 Water Valve	31 Blade Spring
11 Lower Mechanism Assy.	32 Blade
12 Closet Flange Seal & Bolt Pkg.	33 Blade Seal
13 Seat	34 Blade Track
14 Hinge Post Kit	35 Flapper
15 Upper Mechanism Assy.	36 Overflow Tube
16 Pod	37 Nozzle Assy.
17 Water Module	38 Bowl
18 Water Valve Link	39 Reservoir Assy.
19 Lever Assy.*	40 Shroud
20 Wire Replacement Pkg.†	
21 Mechanism Cover	

Specify High or Low

*Hand Flush only

† Foot-Pedal Flush only

2001 LIMITED TRAILER

SAFETY EQUIPMENT

510781	Smoke detector
511309	LPG detector
600162-01	Fire extinguisher
0300027	Break-away switch
510661	Breaker, 110 volt, 20 amp, GFI
371348-02	Window, rear w/red handles
371349-01	Screen, rear escape
372175-03	Screen, 30", alternate escape
380230-04	Knob, window arm, red
381088	Handle, lower window latch, red

2001 LIMITED TRAILER

SEALER/GASKETS/PAINT

SEALER

360074	Sealant, white, 3 oz. tube
360001	Sealant, #884058 Butyl rubber
360002	Sealant, Vulkem 11.5 oz. tube
360209	Sealant, seam
360176	Sealant, Almond, kitchen and bath
360180	Sealant, Sikaflex #221
360210	Sealant, Paralastic 4334-014
360283	Sealant, silicone, Corian Bone
360216	Caulk, latex acrylic, brown (hardwood floor)

GASKETS

381704	Gasket, upper main door, (above main gasket)
365232	Gasket, main/baggage door
365013-01	Gasket, screen door
0401-0002	Gasket, window frame to glass
365035	Gasket, access doorjamb
380114	Gasket, vent pipe, roof
365222	Tape, double coated, .08" x ¾"
365016	Tape, foam, double face, ½" wide
365001	Tape, double coated foam

PAINT

360213	Paint, aluminum metallic, Centari #6575
360151	Paint, gray metallic, Centari #44146A
360027	Paint, silver metallic
360214	Paint "Tapestry Red", Centari, #45117
360292	Stain, Saratoga Oak
360260	Paint, Pewter, underbelly

2001 LIMITED TRAILER
UPHOLSTERY/FOAM/MATTRESS
REAR BEDROOM

- *702485-399 Bed spread, twin, Roman Sands
- *702676-399 Bed spread, double, Roman Sands

- 701770 Mattress, 34" x 78", contoured, twin
- 702674 Mattress, 60 x 75, w/45 degree corners

- 701611 Pillow 21 x 31
- 702953-03 Pillow kit, twin, Roman Sands
- 702953-04 Pillow kit, double, Roman Sands

UPHOLSTERY COVERS

- 998070 Cover, seat, side dinette
- 998071 Cover, back, side dinette

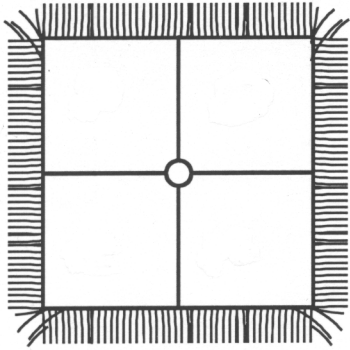
- 963398-01 Arm rest cushion, front lounge, RS
- 963398-03 Arm rest cushion, front lounge, CS

FOAM

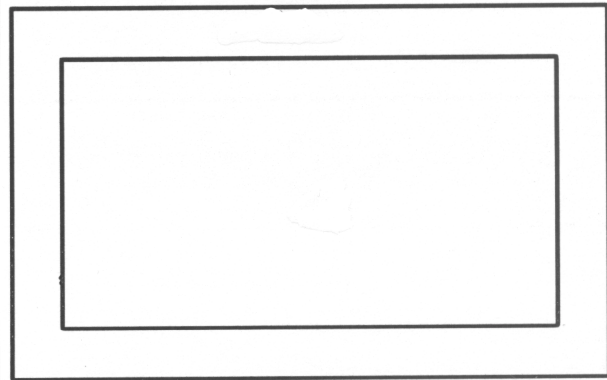
- 702464-21 Foam, upper back, dinette
 - 702464-13 Foam, lower back, dinette
 - 702464-14 Foam, aft seat, dinette
 - 702464-15 Foam, forward seat, dinette

 - 702673-01 Foam, armrest, RS
 - 702673-03 Foam, armrest, CS
- *Changing the- (dash) number to
- | | |
|--------------------|---------------------|
| 320 =Golden Oak | 350 =Georgia Peach |
| 470 =Mandalay Blue | 460 =Mystic Mint |
| 379 = Mosaic Blue | 389 = Tropical Isle |

2001 LIMITED TRAILER
UPHOLSTERY/FOAM/MATTRESSES
GOLDEN OAK PILLOW KIT

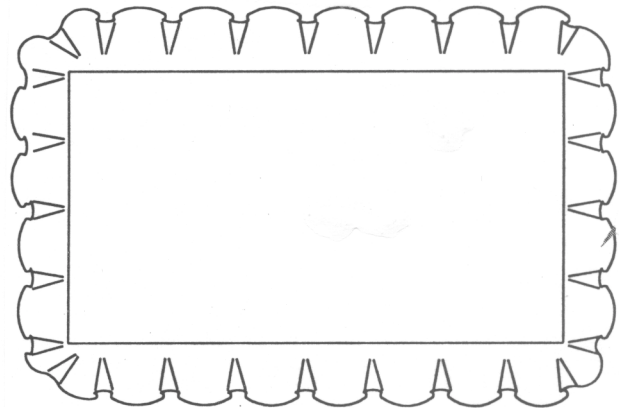
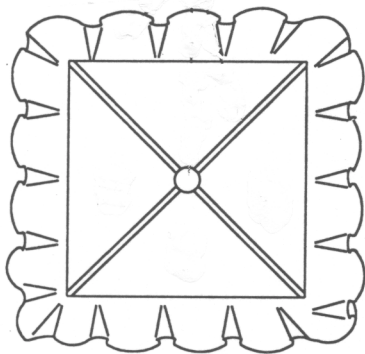


702089-09 SOFA PILLOW



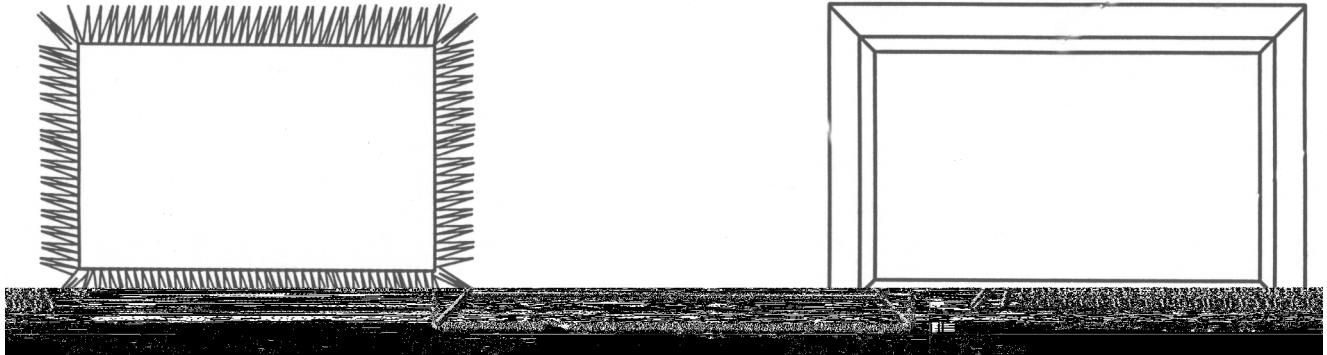
703089-02 Bedroom sham

GEORGIA PEACH PILLOW KIT



2001 LIMITED TRAILER
UPHOLSTERY/ FOAM/MATTRESSES

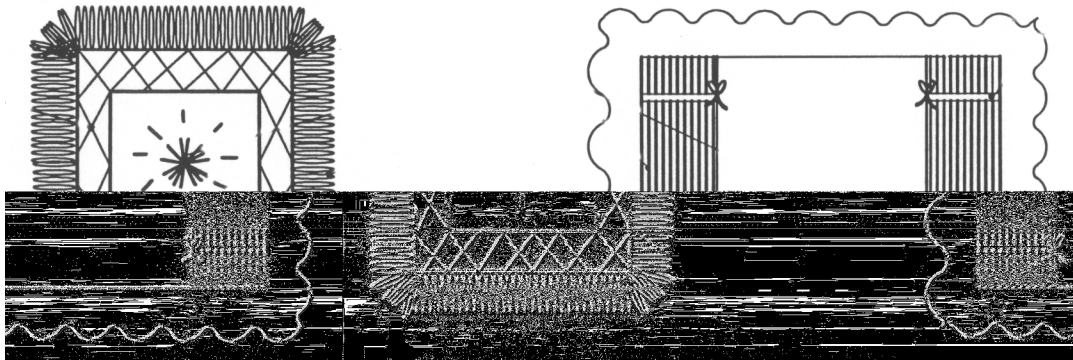
Roman Sands Pillow Kit



702953 Lounge accent pillow

702953 Sham 21"x33"

Mosaic Blue Pillow Kit



702038-01 Lounge accent pillow

702038-02 Pillow sham

2001 LIMITED TRAILER

VENTS/FANS

381564	Vent, automatic, w/wall thermostat, Fantastic
381450	Vent, automatic, internal thermostat, Fantastic
381450-100	Screen, Fantastic roof vent
381450-101	Motor, elevator, Fantastic vent
690266-01	Ventilator, power, bathroom
690266-03	Extension, garnish, 4", roof
381541-06	Roof vent w/power lift
381541-05	Switch, white, ceiling vent
381541-04	Trim ring, inside garnish, Ventline
511152-04	Range hood w/monitor
114462	Duct, range transition, formed
453000	Bracket, range hood support
511017-11	Vent cover, exterior, Range hood, gray
100341	Refrigerator, vent collar, large
101394	Cover, refrigerator vent, large
690264-03	Vent pipe cover
380114	Gasket, vent pipe

2001 LIMITED TRAILER

WOOD/LAMINATES/INTERIOR TRIM

800397-01	Cedar, planked, 5/32" x 4' x 8'
800542-02	Structure wood 3/8" x 4' x 8'
800542-03	Structure wood 1/2" x 4' x 8'
800542-05	Structure wood .700" x 4' x 8', sanded
800507-01	Paneling, luan, 1/8" x 4' x 8'
800507-02	Paneling, luan 1/4" x 4' x 8'
800507-03	Paneling, luan 3/8" x 4' x 8'
801261-01	Paneling, 1/8" x 4' x 8', G1S, Antiquity Buff/raw
801183-004	Paneling 1/2" x 4' x 8', G2S, oak/Antiquity Buff
801283	Paneling 1/2" x 4' x 8', G2S, Antiq. Buff/Antiq. Buff
801274	Paneling 1/2" x 4' x 8', G1S, Antiquity Buff
801284-004	Paneling 1/2" x 4' x 8', G2S, Antiquity Buff/Oak
801180-004	Paneling 1/2" x 4' x 8', G2S, oak/oak
801179-004	Paneling, 1/2" x 4' x 8', G1S, oak/raw
801182-004	Paneling 5/32" x 4' x 8', G2S, oak/oak
801181-004	Paneling 5/32" x 4' x 8', G1S, oak/raw
801230	Laminate, oak, 4' x 8'
801229	Laminate oak, .045 -.050
365251-01	Tape, seam, Antiquity Buff, 1 1/8" wide
365251-02	Tape, seam, Antiquity Buff, 8" wide
365251-03	Tape, seam, Antiquity Buff, 12" wide

2001 LIMITED TRAILER

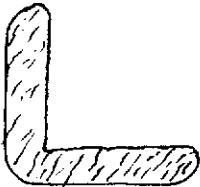
WOOD/INTERIOR



1) 801206-014



2) 964152-014



3) 800575-014



4) 800571-014



5) 800638-024



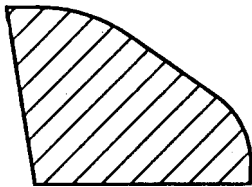
6) 801172-014
6a) 801172-04



7) 801173-034



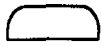
8) 801173-044



9) 801242-004

- | | |
|---------------|--|
| 1) 801206-014 | Molding, floor, oak, 43" |
| 2) 964152-014 | Molding, chair rail, oak |
| 3) 800575-014 | Molding, corner, oak |
| 4) 800571-014 | Molding, oak, flat $\frac{1}{4}$ " x $\frac{33}{64}$ " x 80" |
| 5) 800638-024 | Molding, quarter round, oak |
| 6) 801172-014 | Molding, flexible corner, oak |
| 6a) 801172-04 | Molding, flexible corner, Antiquity Buff |
| 7) 800572-014 | Molding, flat radius, .88" oak |
| 8) 800573-014 | Molding, flat radius, 1.13" oak |
| 9) 801242-004 | Molding, threshold, main door |

2001 LIMITED TRAILER
WOOD/INTERIOR



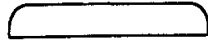
1) 801173-014



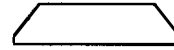
2) 801173-024



3) 801173-034



4) 801173-044



5) 801178-03

- | | |
|---------------|--|
| 1) 801173-014 | Flat molding, vinyl wrapped, oak, .50" wide |
| 2) 801173-024 | Flat molding, vinyl wrapped, oak, .75" wide |
| 3) 801173-034 | Flat molding, vinyl wrapped, oak, .88" wide |
| 4) 801173-044 | Flat molding, vinyl wrapped, oak, 1.13" wide |
| 5) 801178-03 | Flat molding, vinyl wrapped, Antiquity Buff |